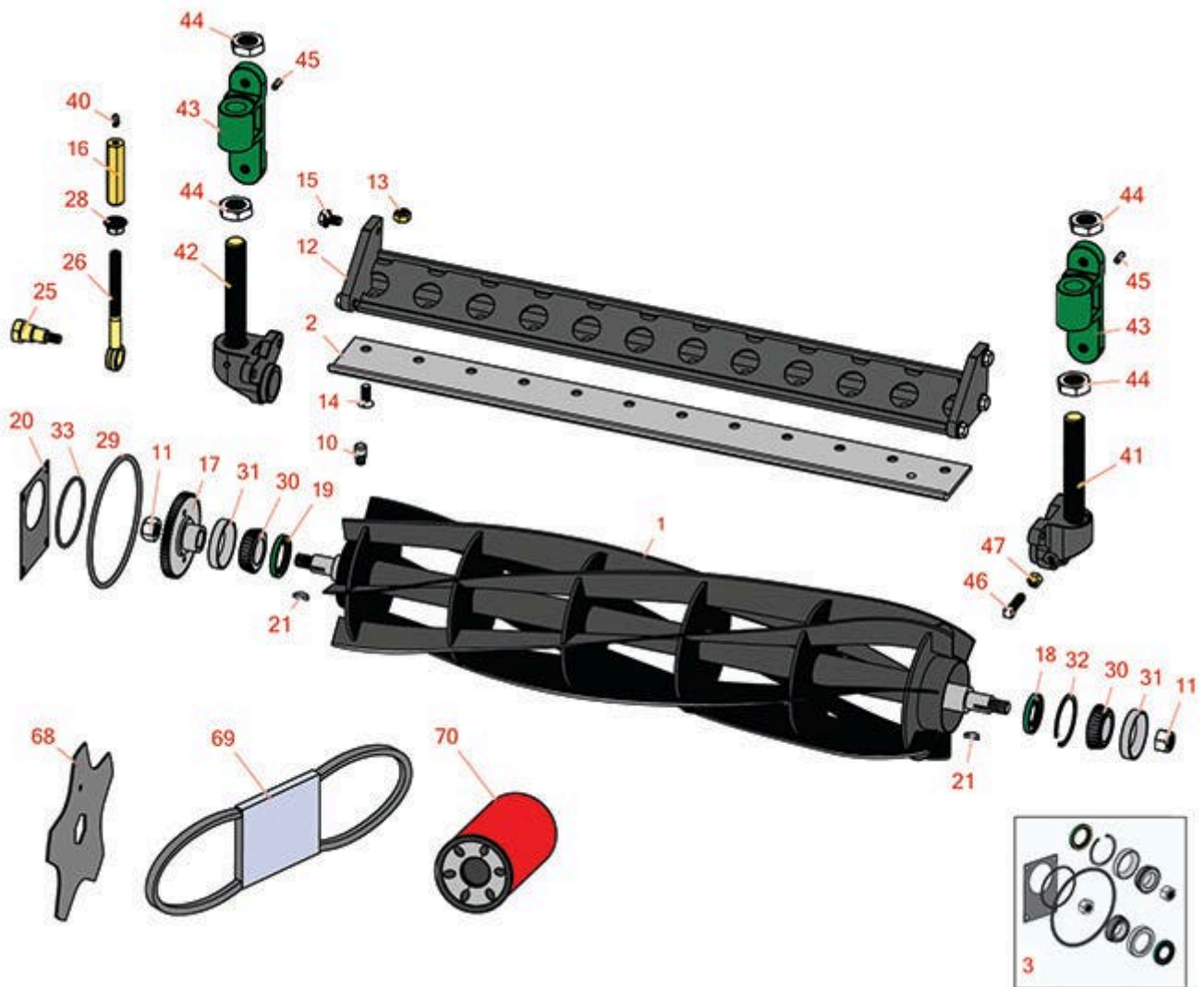




# Replaces John Deere 3325 Hydraulic Gang Mower Parts

ESP Cutting Unit  
Reel & Bedknife



All original equipment manufacturers names and part numbers are used for identification purposes only, and we are in no way implying that our products are original equipment parts. Prices subject to change without notice.



# Replaces John Deere 3325 Hydraulic Gang Mower Parts

ESP Cutting Unit  
Reel & Bedknife



Item No	R&R Part No.	OEM Part No.	Description	Qty Req	Order Quantity
---------	--------------	--------------	-------------	---------	----------------

## R&R Reels, Lifetime Guaranteed

1	<b>RAET10856</b>	AET10856, AMT2887	Reel - 6 Blade	1	
---	------------------	----------------------	----------------	---	--

*Detail Description: R&R Reel blades are expertly crafted from premium high carbon-boron alloy steel, heat-treated to perfectly complement both R&R and OEM bedknives. Each reel undergoes precision cylindrical grinding on bearing surfaces, followed by relief grinding for optimal performance. Advanced computer balancing ensures extended reel and bearing life. Backed by our lifetime guarantee against defects in materials and craftsmanship under normal use, R&R Reels deliver unmatched durability and cutting precision you can trust.:*

1	<b>RAET10857</b>	AET10857	Reel - 8 Blade	1	
---	------------------	----------	----------------	---	--

*Detail Description: R&R Reel blades are expertly crafted from premium high carbon-boron alloy steel, heat-treated to perfectly complement both R&R and OEM bedknives. Each reel undergoes precision cylindrical grinding on bearing surfaces, followed by relief grinding for optimal performance. Advanced computer balancing ensures extended reel and bearing life. Backed by our lifetime guarantee against defects in materials and craftsmanship under normal use, R&R Reels deliver unmatched durability and cutting precision you can trust.:*

1	<b>RAET10858</b>	AET10858	Reel - 10 Blade	1	
---	------------------	----------	-----------------	---	--

*Detail Description: R&R Reel blades are expertly crafted from premium high carbon-boron alloy steel, heat-treated to perfectly complement both R&R and OEM bedknives. Each reel undergoes precision cylindrical grinding on bearing surfaces, followed by relief grinding for optimal performance. Advanced computer balancing ensures extended reel and bearing life. Backed by our lifetime guarantee against defects in materials and craftsmanship under normal use, R&R Reels deliver unmatched durability and cutting precision you can trust.:*

## R&R Bedknives, Lifetime Guaranteed

2	<b>RET16755</b>	ET16755	Bedknife - Low Cut 3/8	1	
---	-----------------	---------	------------------------	---	--

*Detail Description: R&R Bedknives are manufactured from high carbon-boron alloy steel and then hardened to RC46-49 to match the temper of our reel blades and original equipment reels. Bedknives are surface ground on the top and front edge and straightened three times before being packaged with oil for rust prevention. All R&R Bedknives now have an increased front edge grind for added life. All R&R Bedknives are guaranteed against defects in material and workmanship under normal use for the life of the part.:*

2	<b>RET16756</b>	ET16756	Bedknife - Standard 1/2	1	
---	-----------------	---------	-------------------------	---	--

All original equipment manufacturers names and part numbers are used for identification purposes only, and we are in no way implying that our products are original equipment parts. Prices subject to change without notice.



# Replaces John Deere 3325 Hydraulic Gang Mower Parts

ESP Cutting Unit  
Reel & Bedknife



Item No	R&R Part No.	OEM Part No.	Description	Qty Req	Order Quantity
---------	--------------	--------------	-------------	---------	----------------

*Detail Description: R&R Bedknives are manufactured from high carbon-boron alloy steel and then hardened to RC46-49 to match the temper of our reel blades and original equipment reels. Bedknives are surface ground on the top and front edge and straightened three times before being packaged with oil for rust prevention. All R&R Bedknives now have an increased front edge grind for added life. All R&R Bedknives are guaranteed against defects in material and workmanship under normal use for the life of the part.:*

## Overhaul Kits

3	<b>R100171</b>		Overhaul Kit - Cutting Unit	0	
---	----------------	--	-----------------------------	---	--

*Detail Description: Includes 2 ea.: RJD8225 Bearing Cups, RJD8187 Bearing Cones & RA31869 Locknuts; 1 ea.: RM18237 Snap Ring, RAP19509 Seal, RU10776 O-Ring, RET10873 Gasket, RH88900 O-Ring & RAN121759 Seal:*

## Other Parts Available

10	<b>R302-14</b>	JD5801	Fitting - Relief	1	
11	<b>RA31869</b>	A31869	Locknut - Reel	2	
12	<b>RAET10829</b>	AET10829	Backing Bar - Bed Knife	1	
13	<b>R14M7400</b>	14M7400	Locknut - 10mm	12	
14	<b>R19M5055</b>	19M5055, 19M8551	Screw - Bedknife M10-1.5 x 25	12	
15	<b>R19M7783</b>	19M7783	Screw - Bed Bar Mount	6	
16	<b>RAET10880</b>	AET10880, AMT2965	Adjuster - Reel	2	
17	<b>RAET11211</b>	AET11211	Gear - Reel Includes Brg	1	
18	<b>RAN121759</b>	AN121759	Seal	1	
19	<b>RAP19509</b>	AP19509	Seal	1	
20	<b>RET10873</b>	ET10873	Gasket - Hyd Motor	1	
21	<b>R26H76</b>	26H76	Key - Woodruff Reel	2	
25	<b>RET16896</b>	ET16896	Bolt - Shoulder	2	

All original equipment manufacturers names and part numbers are used for identification purposes only, and we are in no way implying that our products are original equipment parts. Prices subject to change without notice.



# Replaces John Deere 3325 Hydraulic Gang Mower Parts

ESP Cutting Unit  
Reel & Bedknife



Item No	R&R Part No.	OEM Part No.	Description	Qty Req	Order Quantity
26	RET16897	ET16897	Eyebolt	2	
28	RET17361	ET17361	Nut - Flanged Eyebolt	2	
29	RH88900	H88900	O-Ring - Gear Case Cover	1	
30	RJD8187	JD8187	Tapered Bearing Cone	2	
31	RJD8225	JD8225	Tapered Bearing Cup	2	
32	RM18237	M18237	Ring - Snap	1	
33	RU10776	U10776	O-Ring	1	
40	R302-5	JD7797, JD7842, JD7844	Fitting - Grease	2	
41	RAET10854	AET10854	Adjuster - Roller Oblong Hole	2	
42	RAET10855	AET10855	Adjuster - Roller Round Hole	2	
43	RAET10877	AET10877	Support - Roller	4	
44	R14M7240	14M7240	Nut - 24mm x 3.0 Fin Hex Jam	8	
45	RR30587	30587, R30587	Pin - Dowell 1/4 Dia. x .75	4	
46	RMT49	MT49	Screw - Set 10mm x 1.5 x 35mm Sh	2	
47	RM82222	M82222	Locknut	2	
68	RET17647	ET17647	Blade - Vertical Mower	0	
68	RET17647C		Verti-Cut Blade - Carbide Tipped	0	
69	RM801821	M801821	Belt - Engine Fan	1	
70	RAT120444	AT120444	Filter - Hyd Oil w/Gasket	1	

All original equipment manufacturers names and part numbers are used for identification purposes only, and we are in no way implying that our products are original equipment parts. Prices subject to change without notice.