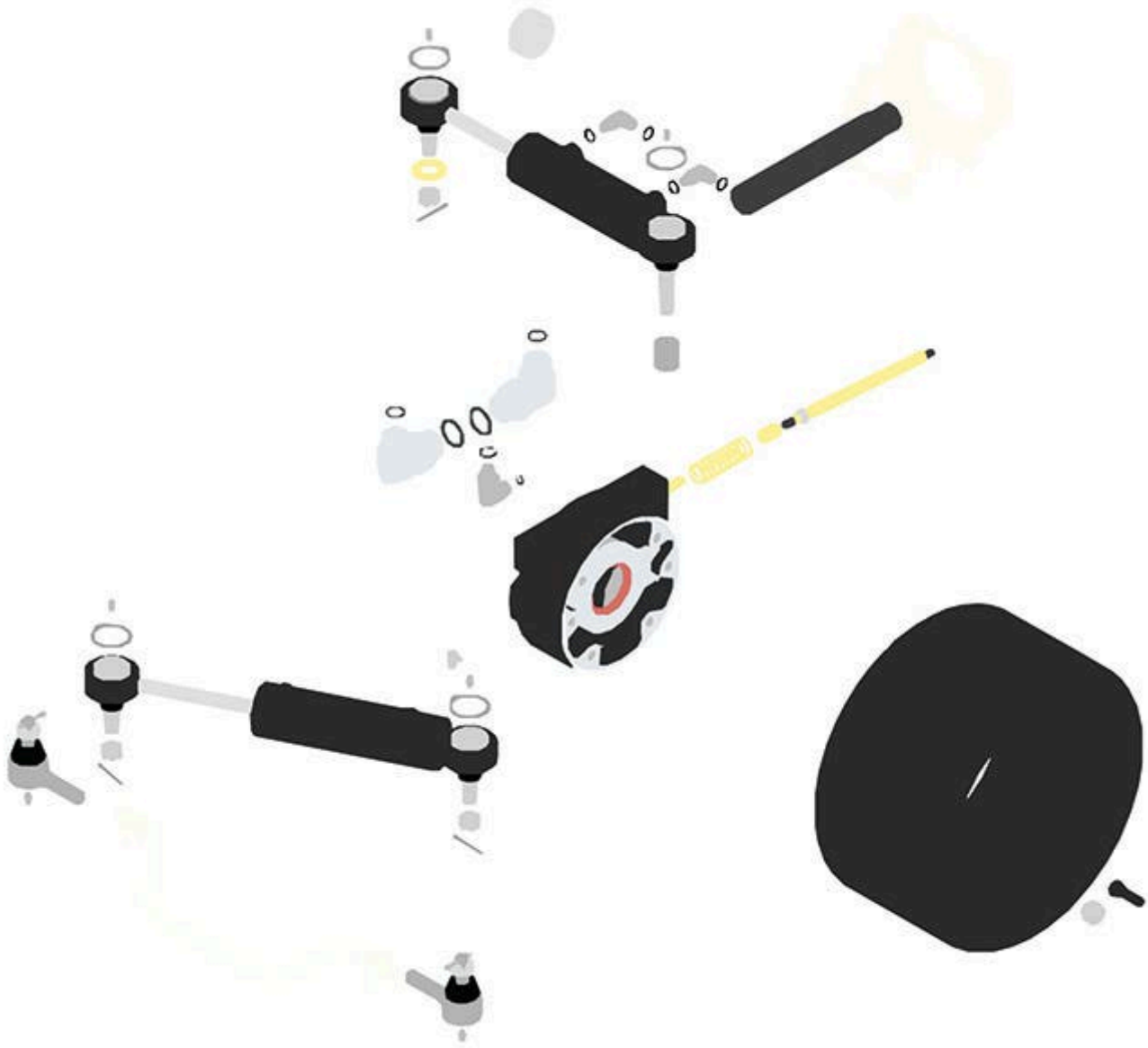




# Replaces Toro Reelmaster 6700D Parts

*Traction Unit  
Wheels*



All original equipment manufacturers names and part numbers are used for identification purposes only, and we are in no way implying that our products are original equipment parts. Prices subject to change without notice.



# Replaces Toro Reelmaster 6700D Parts

Traction Unit  
Wheels



Item No	R&R Part No.	OEM Part No.	Description	Qty Req	Order Quantity
<b>Overhaul Kits</b>					
1	<b>R107-0245</b>	107-0245	Seal Kit - Fits R105-0775 Hyd Cyl	0	
41	<b>R100-2582</b>	100-2582, 217-120, 217-125	Rim - Rear Tire 10 x 7	0	
42	<b>R232-24</b>	232-24, 232-35	Stem - Valve w/ Cap	0	
<b>Other Parts Available</b>					
70	<b>R107-1976</b>	107-1976	Cylinder - Steering	1	
71	<b>R106-6774</b>	106-6774, 92-5838, 92-5838-01	Ball Joint	3	
72	<b>R32151-104</b>	32151-104	Ring - Retaining, Ex	3	
73	<b>R302-5</b>	21-6010, 302-11, 302-37, 302-47, 302-5, 302-57, 302-58, 302-6, 31-0300, 32-9660, 60-0800, 62-3880, 92-4181	Fitting - Grease	6	
74	<b>R92-5836</b>	92-5836	Flat Washer - Hardened	1	
75	<b>R100-3795</b>	100-3795	Ball Joint	2	
76	<b>R3272-11</b>	01-151-0010, 01-151-0040, 28-18-D, 28-28-D, 3211-72, 3272-11	Pin - Cotter	3	

All original equipment manufacturers names and part numbers are used for identification purposes only, and we are in no way implying that our products are original equipment parts. Prices subject to change without notice.



# Replaces Toro Reelmaster 6700D Parts

*Traction Unit  
Wheels*



Item No	R&R Part No.	OEM Part No.	Description	Qty Req	Order Quantity
77	<b>R340-97</b>	340-97	Hydraulic Fitting - 90 Deg	2	
78	<b>R237-22</b>	107-8844, 237-22, 237-78	O-Ring	5	
79	<b>R323016</b>	302-33, 323016	Zerk - Grease	1	
80	<b>R100-3070-03</b>	100-3070-03	Brake Assy - LH	1	
80	<b>R100-3069-03</b>	100-3069-03	Brake Assy - RH	1	
81	<b>R94-8141</b>	94-8141	Hydraulic Cylinder	1	
82	<b>R106-1113</b>	100-3852, 106-1113	Tie Rod End Assy RH Thread	2	
83	<b>R340-142</b>	340-142, 95-1692	Hydraulic Fitting - 90 Deg	2	
84	<b>R340-18</b>	340-18	Hydraulic Fitting	1	
85	<b>R237-58</b>	237-58	O-Ring	5	
86	<b>R237-81</b>	237-81, 237.81, 327-81	O-Ring	2	
87	<b>R94-3088</b>	94-3088	Spring - Compression	2	
88	<b>R92-7530</b>	92-7530	Brake Cable Assy - LH	1	
88	<b>R92-7529</b>	92-7529	Brake Cable Assy - RH	1	
89	<b>R115-9142</b>	115-9142	Pin - Rear Axle	1	
90	<b>R237-79</b>	237-79	O-Ring	1	
91	<b>R99-7534</b>	99-7534	Bearing - Double Row Ball	1	
92	<b>R100-3796</b>	100-3796	Spacer - Ball Joint	1	

All original equipment manufacturers names and part numbers are used for identification purposes only, and we are in no way implying that our products are original equipment parts. Prices subject to change without notice.



# Replaces Toro Reelmaster 6700D Parts

*Traction Unit  
Wheels*



Item No	R&R Part No.	OEM Part No.	Description	Qty Req	Order Quantity
93	<b>R242-50</b>	242-50	Nut - 1/2-20 Wheel	10	

All original equipment manufacturers names and part numbers are used for identification purposes only, and we are in no way implying that our products are original equipment parts. Prices subject to change without notice.