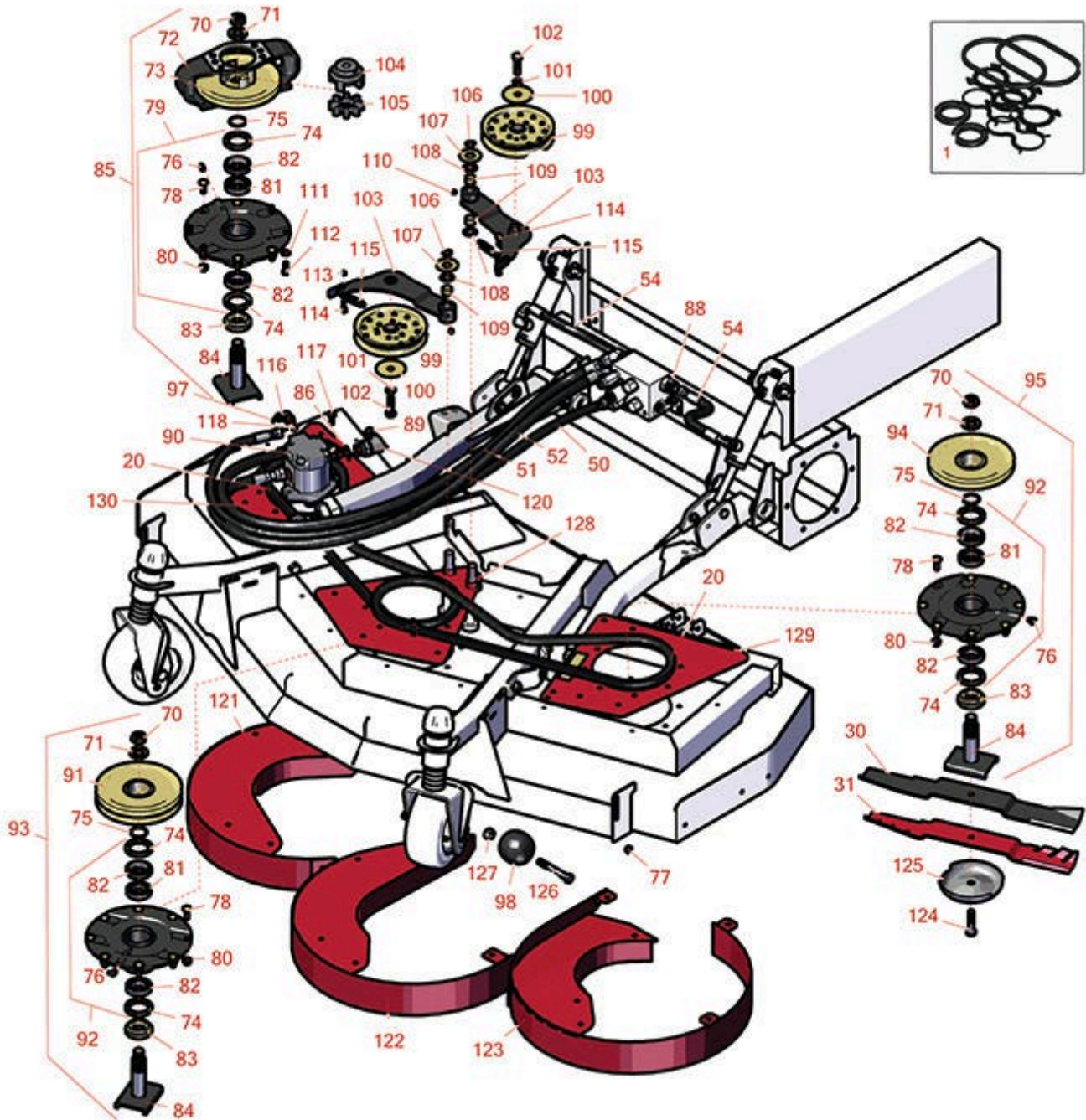




# Replaces Toro Groundsmaster 4000-D Parts

Rotary Mower - Model 30605  
Front Deck Hydraulics and Spindles



All original equipment manufacturers names and part numbers are used for identification purposes only, and we are in no way implying that our products are original equipment parts. Prices subject to change without notice.



# Replaces Toro Groundsmaster 4000-D Parts

Rotary Mower - Model 30605  
Front Deck Hydraulics and Spindles



Item No	R&R Part No.	OEM Part No.	Description	Qty Req	Order Quantity
<b>Overhaul Kits</b>					
1	<b>R114-5620</b>	114-5620	Seal Kit - Fits R127-3694 Hyd Motor	1	
<b>Belts</b>					
20	<b>R55-7660</b>	108-8076	Belt - V Rotary Deck	2	
<b>Rotary Blades Available</b>					
30	<b>R92-5608</b>	92-5608, 92-5608-03	Mower Blade - 21.75 in	3	
31	<b>R92-5608M</b>	104-1303, 107-0214-03	Mower Blade - Mulcher 21.75	3	
<b>Hoses</b>					
50	<b>R120-8989</b>	120-8989	Hydraulic Hose Assy	1	
51	<b>R120-8988</b>	120-8988	Hydraulic Hose Assy	1	
52	<b>R120-8987</b>	120-8987	Hydraulic Hose Assy	1	
54	<b>R104-2234</b>	104-2234	Hydraulic Hose Assy	2	
<b>Other Parts Available</b>					
70	<b>R32127-46</b>	32127-46, 3296-60	Locknut	3	
71	<b>R104-8322</b>	104-8322, 120-5576	Washer - Spindle Shaft Hardened	3	
72	<b>R104-3544</b>	104-3544	Mount - Motor Drive	1	
73	<b>R104-3545</b>	104-3545	Pulley - Drive	1	
74	<b>R253-154</b>	253-154	Seal - Spindle	6	
75	<b>R106-7159</b>	106-7159	O-Ring	3	
76	<b>R302-60</b>	302-60	Zerk - Grease 90 Deg.	3	

All original equipment manufacturers names and part numbers are used for identification purposes only, and we are in no way implying that our products are original equipment parts. Prices subject to change without notice.



# Replaces Toro Groundsmaster 4000-D Parts

Rotary Mower - Model 30605  
Front Deck Hydraulics and Spindles



Item No	R&R Part No.	OEM Part No.	Description	Qty Req	Order Quantity
77	<b>R104-8300</b>	104-8300, 104-8300 , 119-4041	Locknut - 5/16-18 Flanged Y/Zinc	2	
78	<b>R114-8195</b>	114-8195, R & R ONLY	Bolt- Ribbed Neck	20	
79	<b>R119-4546</b>	104-3552, 119-3552, 119-4546	Spindle Housing Assy	1	
80	<b>R104-8301</b>	104-8301, 104-9301, 109-6658, 133-7570	Locknut - 3/8-16 Nylon Flanged	20	
81	<b>R104-3549</b>	104-3549	Spacer Set - Spindle Bearing	3	
81	<b>R120-5577</b>	120-5577	Bearing Spacer Set - Ground	3	
82	<b>R110-8297</b>	110-8297, 26-1830	Bearing Set w/Retaining Rings - Spindle	3	
83	<b>R92-9800</b>	69-6950, 69-6980, 92-9800	Spacer - Spindle	3	
<i>Tech Note: Ser# 315001501-401200000:</i>					
83	<b>R138-6416</b>	138-6416	Spacer - Spindle Shaft	3	
<i>Tech Note: Ser# 408900000-999999999:</i>					
84	<b>R104-3554</b>	104-3554	Shaft - Spindle Assy.	3	
<i>Tech Note: Ser# 315001501-401200000:</i>					
84	<b>R139-1044</b>	139-1044	Shaft - Spindle Assy	2	
<i>Tech Note: Ser# 408900000-999999999:</i>					
85	<b>R119-4547</b>	104-3529, 119-4547, 139-1035	Driving Spindle Assy	1	

All original equipment manufacturers names and part numbers are used for identification purposes only, and we are in no way implying that our products are original equipment parts. Prices subject to change without notice.



# Replaces Toro Groundsmaster 4000-D Parts

*Rotary Mower - Model 30605  
Front Deck Hydraulics and Spindles*



Item No	R&R Part No.	OEM Part No.	Description	Qty Req	Order Quantity
85	<b>R139-1035</b>	139-1035	Drivin Spindle Assy	0	
86	<b>R237-81</b>	237-81, 237.81, 327-81	O-Ring	2	
88	<b>R340-9</b>	340-9	Fitting - Straight Connector	2	
89	<b>R237-65</b>	237-65, 237.65	O-Ring	2	
90	<b>R127-3694</b>	127-3694	Hydraulic Motor	3	
90	<b>R99-5489</b>	99-5489	Hydraulic Motor	3	
91	<b>R104-3547</b>	104-3547	Pulley - Double Driven	1	
92	<b>R119-4775</b>	119-4775	Spindle Housing Assy	2	
93	<b>R119-4548</b>	104-3530, 119-4548, 139-1037	Double Driven Spindle Assy	1	
94	<b>R104-3548</b>	104-3548	Pulley - Higher Driven	1	
95	<b>R119-4549</b>	104-3531, 119-4549, 139-1038	High Driven Spindle Assy	1	
97	<b>R237-22</b>	107-8844, 237-22, 237-78	O-Ring	7	
98	<b>R29-4820</b>	29-4820	Roller	2	
99	<b>R110-9596</b>	110-9596, 132-9421	Pulley- Flat Idler	2	
100	<b>R100-3102</b>	100-3102	Washer-Flat	2	

All original equipment manufacturers names and part numbers are used for identification purposes only, and we are in no way implying that our products are original equipment parts. Prices subject to change without notice.



# Replaces Toro Groundsmaster 4000-D Parts

Rotary Mower - Model 30605  
Front Deck Hydraulics and Spindles



Item No	R&R Part No.	OEM Part No.	Description	Qty Req	Order Quantity
101	<b>R3253-7</b>	01-166-0030, 01-166-0080, 01-166-0290, 01-166-0810, 23-13-GD, 3253-7, 48-9380	Washer - Lock 1/2	2	
102	<b>R325-7</b>	01-150-0380, 01-178-0814, 3226-3, 325-7, 48-9490	Bolt - 1/2-13 x 1 3/4 Hex HD Gr 5	2	
103	<b>R110-6128</b>	110-6128	Idler Arm Assy	2	
104	<b>R104-3541</b>	104-3541	Hub - Drive	1	
105	<b>R104-3542</b>	104-3542	Spider	1	
106	<b>R458013</b>	30-0580, 32120-72, 458013, 93-2525, 936125	Ring - Retaining	2	
107	<b>R70-1160</b>	70-1160	Washer	2	
108	<b>R3-6498</b>	3--6498, 3-6498, 47-8270	Washer - Thrust	4	
109	<b>R256-76</b>	256-76	Bushing	4	

All original equipment manufacturers names and part numbers are used for identification purposes only, and we are in no way implying that our products are original equipment parts. Prices subject to change without notice.



# Replaces Toro Groundsmaster 4000-D Parts

Rotary Mower - Model 30605  
Front Deck Hydraulics and Spindles



Item No	R&R Part No.	OEM Part No.	Description	Qty Req	Order Quantity
110	<b>R302-5</b>	21-6010, 302-11, 302-37, 302-47, 302-5, 302-57, 302-58, 302-6, 31-0300, 32-9660, 60-0800, 62-3880, 92-4181	Fitting - Grease	2	
111	<b>R453011</b>	01-166-0100, 01-166-0120, 01-166-0270, 01-166-0500, 01-166-0600, 01-166-0620, 132-4593, 2356-3, 237-12, 24-10-AD, 24-11-AD, 24-11-BD, 24-12-AD, 24-12-BD, 30-9310, 32-8190, 3256-24, 3256-3, 3256-36, 3256-4, 453011, 47-9950, 48-9220, 513458, 7-0052	Washer - Flat 3/8 SAE Y/Zinc	4	

All original equipment manufacturers names and part numbers are used for identification purposes only, and we are in no way implying that our products are original equipment parts. Prices subject to change without notice.



# Replaces Toro Groundsmaster 4000-D Parts

Rotary Mower - Model 30605  
Front Deck Hydraulics and Spindles



Item No	R&R Part No.	OEM Part No.	Description	Qty Req	Order Quantity
112	<b>R323-6</b>	01-150-0010, 01-178-0608, 20-47-AD, 20-47-AGD, 3224-2, 323-6, 49-3510, 908034P, 908332	Bolt - Hex HD 3/8-16 x 1 GR5 YZ	4	
113	<b>R3296-56</b>	3296-56	Nut - Lock - 1/4-20 ESNA Jam	2	
114	<b>R104-0858</b>	104-0858	Bolt - Shoulder	2	
115	<b>R107938</b>	107938	Spring - Extension	2	
116	<b>R340-77</b>	340-100, 340-77, 95-7889	Hydraulic Fitting	1	
117	<b>R3234-42</b>	3234-42	Bolt - 3/8-16 x 1 Hx HD Fl	2	
118	<b>R237-42</b>	237-42, 31-4160	O-Ring	1	
120	<b>R340-139</b>	340-139	Hydraulic Fitting - 90 Deg	1	
121	<b>R104-2201-01</b>	104-2201-01	Chamber Assy - RH	1	
121	<b>R130-2674-01</b>	130-2674-01	Chamber Assy - RH	1	
122	<b>R104-2200-01</b>	104-2200-01	Chamber Assy - Center	1	
123	<b>R104-2202-01</b>	104-2202-01	Chamber Assy - LH	1	
123	<b>R130-2675-01</b>	130-2675-01	Chamber Assy LH	1	
124	<b>R92-5816</b>	92-5816	Bolt - Hex HD 1/2-20 x 2-1/4	3	
125	<b>R72-9361</b>	27-1000, 27-1001, 72-9360, 72-9361	Cup - Anti-Scalp	3	

All original equipment manufacturers names and part numbers are used for identification purposes only, and we are in no way implying that our products are original equipment parts. Prices subject to change without notice.



# Replaces Toro Groundsmaster 4000-D Parts

Rotary Mower - Model 30605  
Front Deck Hydraulics and Spindles



Item No	R&R Part No.	OEM Part No.	Description	Qty Req	Order Quantity
126	<b>R325-17</b>	01-150-0640, 01-150-0850, 01-178-0832, 01-178-0836, 20-97-AGD, 325-17, 325-18, 48-9260	Bolt - Hex Head	2	
127	<b>R3296-25</b>	30-3380, 32127-21, 32127-31, 3290-160, 3290-33, 3296-13, 3296-25, 3296-45, 329645	Locknut - 1/2-13 Heavy ESNA	2	
128	<b>R131-1237</b>	131-1237	Plate - Spindle - Front- Center	1	
129	<b>R131-1239</b>	131-1239	Plate-Spindle, Front-Left	1	
130	<b>R131-1238</b>	131-1238	Plate-Spindle, Front-Right	1	

All original equipment manufacturers names and part numbers are used for identification purposes only, and we are in no way implying that our products are original equipment parts. Prices subject to change without notice.