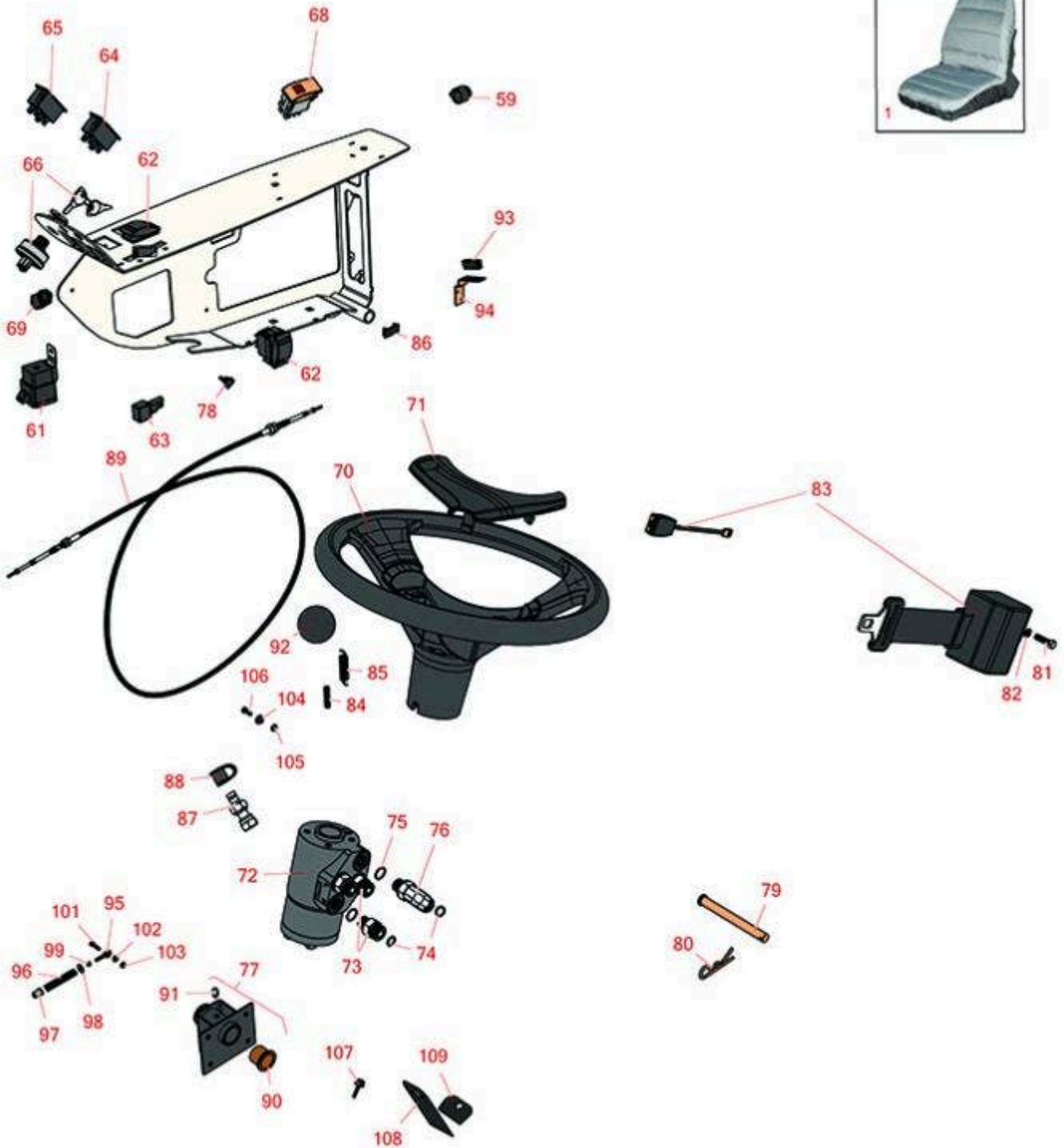




# Replaces Toro Groundsmaster 4000-D

## Parts

Rotary Mower - Model 30410  
Seat and Controls



All original equipment manufacturers names and part numbers are used for identification purposes only, and we are in no way implying that our products are original equipment parts. Prices subject to change without notice.



# Replaces Toro Groundsmaster 4000-D Parts

Rotary Mower - Model 30410  
Seat and Controls



Item No	R&R Part No.	OEM Part No.	Description	Qty Req	Order Quantity
<b>Overhaul Kits</b>					
1	<b>R120-5179</b>	120-5179	Large Seat Cover - Gray	1	
<b>Guages amd Controls</b>					
59	<b>R80-9330</b>	80-9330	Alarm - Audio	1	
61	<b>R99-7430</b>	99-7430	Relay - 30 Amp	1	
62	<b>R95-8999</b>	95-8999	Switch - Headlight	2	
63	<b>R100-4918</b>	100-4818, 100-4918	Diode	1	
64	<b>R100-8071</b>	100-8071	Lamp - Warning	2	
65	<b>R100-8070</b>	100-8070	Lamp - Warning	1	
66	<b>R151386</b>	106-5269	Ignition Switch Assy	1	
66	<b>R104-2541</b>	104-2541, 88-9830	Switch - Key 6 Lead 5/8 Mt.	1	
66	<b>R343060</b>	218-412, 32-8380, 33-2010, 62-7770, 63-8360, 94-2618	Ignition - Key Set/2	1	
68	<b>R100-8072</b>	100-8072	Switch	1	
69	<b>RX1709565660</b>	98-7611, 99-3463, 99-7611	Kubota Controller	1	
<b>Other Parts Available</b>					
70	<b>R98-1471</b>	93-5212, 94-3500, 98-1471	Steering Wheel Assy - 14 in Incl Cap	1	
71	<b>R98-1468</b>	98-1468	Cap - 14" Steering Wheel	1	

All original equipment manufacturers names and part numbers are used for identification purposes only, and we are in no way implying that our products are original equipment parts. Prices subject to change without notice.



# Replaces Toro Groundsmaster 4000-D Parts

Rotary Mower - Model 30410  
Seat and Controls



Item No	R&R Part No.	OEM Part No.	Description	Qty Req	Order Quantity
72	<b>R130-7944</b>	104-2213, 114-5074, 130-7944	Valve- Control - Steering	1	
73	<b>R340-2</b>	340-2, 60-1920	Hydraulic Fitting - Striaight	3	
74	<b>R237-22</b>	107-8844, 237-22, 237-78	O-Ring	4	
75	<b>R237-42</b>	237-42, 31-4160	O-Ring	4	
76	<b>R340-77</b>	340-100, 340-77, 95-7889	Hydraulic Fitting	1	
77	<b>R104-3565</b>	104-3565	Pedal Bracket Assy	1	
78	<b>R95-9648</b>	95-9648	Knob - 3/8-16 Thread	1	
79	<b>R283-83</b>	283-83, 42194, 93-5343	Pin - Clevis	2	
80	<b>R3290-355</b>	01-159-0050, 3290-355, 58-5370	Pin - Bridge - Snap	2	
81	<b>R3212-4</b>	3212-3, 3212-4	Bolt - Hex HD 7/16-20 x 1 GR5	2	
82	<b>R3253-6</b>	01-166-0710, 23-12-GD, 3253-6, 59-7590	Washer - Lock 7/16 Zinc	2	
83	<b>R150848</b>	100-4928, 110-0413, 110-9720, 95-8910	Belt-Seat	1	
84	<b>R71-8310</b>	71-8310	Spring - Compression	1	

All original equipment manufacturers names and part numbers are used for identification purposes only, and we are in no way implying that our products are original equipment parts. Prices subject to change without notice.



# Replaces Toro Groundsmaster 4000-D Parts

*Rotary Mower - Model 30410  
Seat and Controls*



Item No	R&R Part No.	OEM Part No.	Description	Qty Req	Order Quantity
85	<b>R93-5985</b>	93-5985	Spring - Extension	1	
86	<b>R99-7420</b>	100-8493, 99-7420	Plug-Hole	1	
87	<b>R86-5480</b>	86-5480, 95-0986	Nipple - Test	1	
88	<b>R354-79</b>	354-79	Cap-Dust	1	
89	<b>R104-7547</b>	104-7547	Cable - Throttle	1	
90	<b>R256-10</b>	256-10	Bushing - Flanged	2	
91	<b>R302-5</b>	21-6010, 302-11, 302-37, 302-47, 302-5, 302-57, 302-58, 302-6, 31-0300, 32-9660, 60-0800, 62-3880, 92-4181	Fitting - Grease	1	
92	<b>R93-5312</b>	93-5312	Knob	1	
92	<b>R233-48</b>	233-24, 233-48, 30-3370	Knob	1	
93	<b>R58-4250</b>	58-4250, 99-3497	Catch - Magnetic	1	
94	<b>R104-7545</b>	104-7545	Bracket - Latch	1	
95	<b>R2411-36</b>	2411-36, R2411-36	Rod End	1	
96	<b>R84-9100</b>	84-9100	Spring	1	

All original equipment manufacturers names and part numbers are used for identification purposes only, and we are in no way implying that our products are original equipment parts. Prices subject to change without notice.



# Replaces Toro Groundsmaster 4000-D Parts

Rotary Mower - Model 30410  
Seat and Controls



Item No	R&R Part No.	OEM Part No.	Description	Qty Req	Order Quantity
98	<b>R453013</b>	01-166-0140, 01-166-0700, 3256-5, 80-4850	Washer - Flat 7/16	1	
97	<b>R92-7610</b>	92-7610	Retainer-Spring	1	
99	<b>R3219-3</b>	01-188-0624, 215-50, 22-13-BJD, 22-13-BJKD, 3219-3	Nut - 3/8-24	1	
101	<b>R323-8</b>	01-150-0060, 01-178-0612, 20-49-AD, 20-49-AGD, 323-8, 3273-41, 908036P	Bolt - Hex HD 3/8-16 x 1-1/2 GR8	1	
102	<b>R453011</b>	01-166-0100, 01-166-0120, 01-166-0270, 01-166-0500, 01-166-0600, 01-166-0620, 132-4593, 2356-3, 237-12, 24-10-AD, 24-11-AD, 24-11-BD, 24-12-AD, 24-12-BD, 30-9310, 32-8190, 3256-24, 3256-3, 3256-36, 3256-4, 453011, 47-9950, 48-9220, 513458, 7-0052	Washer - Flat 3/8 SAE Y/Zinc	1	

All original equipment manufacturers names and part numbers are used for identification purposes only, and we are in no way implying that our products are original equipment parts. Prices subject to change without notice.



# Replaces Toro Groundsmaster 4000-D Parts

Rotary Mower - Model 30410  
Seat and Controls



Item No	R&R Part No.	OEM Part No.	Description	Qty Req	Order Quantity
103	<b>R3296-39</b>	32127-25, 32128-36, 3290-357, 3296-17, 3296-22, 3296-39, 915663P, 99-7443	Locknut - 3/8-16 Nylon	1	
104	<b>R93-5988</b>	93-5204, 93-5988	Hub - Pivot	2	
105	<b>R104-8301</b>	104-8301, 104-9301, 109-6658, 133-7570	Locknut - 3/8-16 Nylon Flanged	2	
106	<b>R323-6</b>	01-150-0010, 01-178-0608, 20-47-AD, 20-47-AGD, 3224-2, 323-6, 49-3510, 908034P, 908332	Bolt - Hex HD 3/8-16 x 1 GR5 YZ	2	
107	<b>R32141-36</b>	32141-36	Screw Adjustment	2	
108	<b>R93-5347</b>	93-5347	Abrasive - Pedal	1	
109	<b>R93-5368</b>	93-5368	Abrasive - Pedal	1	

All original equipment manufacturers names and part numbers are used for identification purposes only, and we are in no way implying that our products are original equipment parts. Prices subject to change without notice.