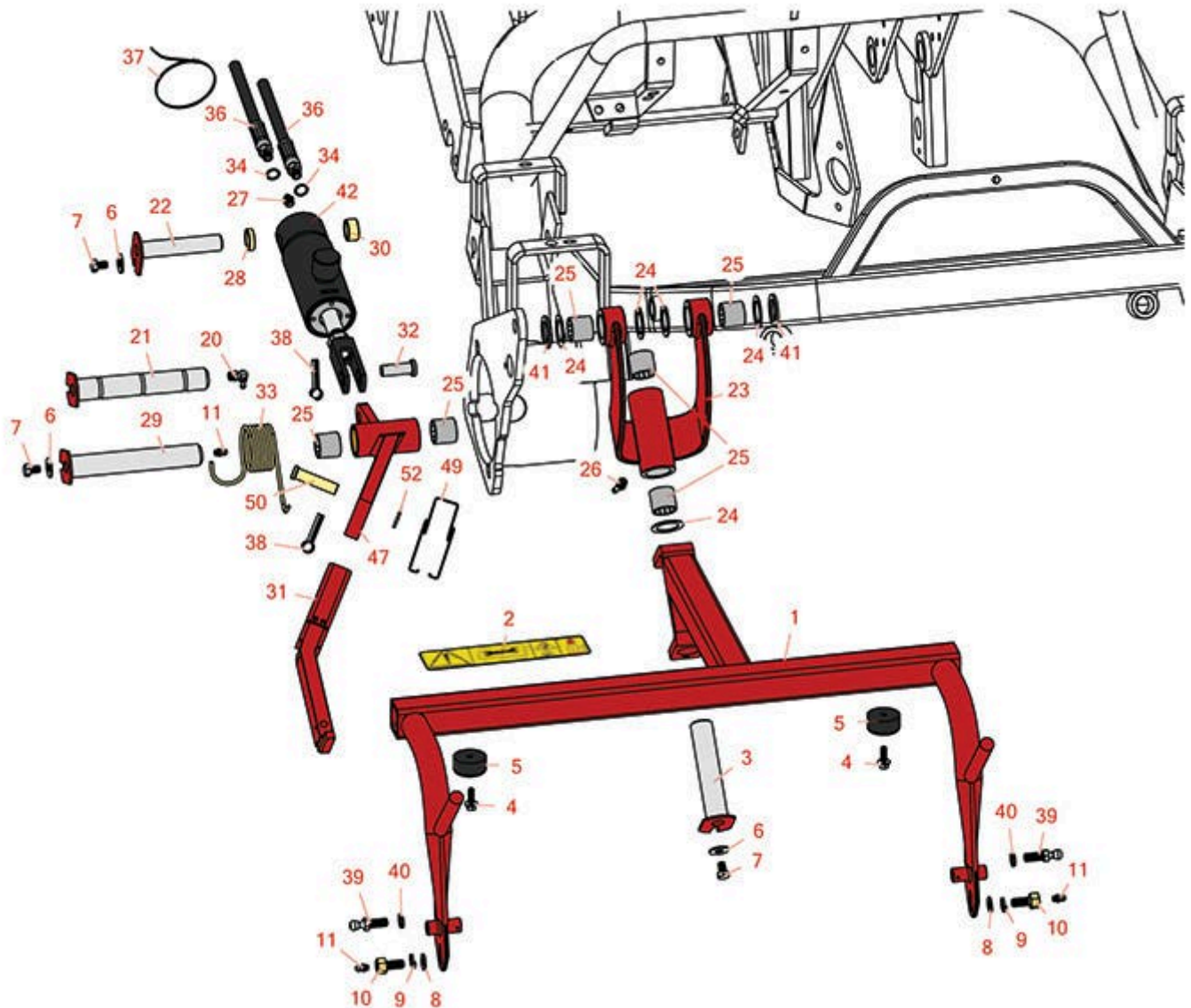




Replaces Toro Greensmaster 3050 Parts

Traction Unit - Model 04351

Right Hand Pull Frame



All original equipment manufacturers names and part numbers are used for identification purposes only, and we are in no way implying that our products are original equipment parts. Prices subject to change without notice.



Replaces Toro Greensmaster 3050 Parts

Traction Unit - Model 04351

Right Hand Pull Frame



Item No	R&R Part No.	OEM Part No.	Description	Qty Req	Order Quantity
1	R112-0282	108-8631, 112-0282, 117-9543	Frame - Pull RH	1	
<i>Tech Note: 2006 & Newer:</i>					
1	R92-9177	104-2055, 92-9177, 92-9177-01	Frame - Pull RH	0	
2	R93-6688	93-6688	Decal - Warning	1	
2	R93-8064	93-8064	Decal - Warning	1	
3	R10-6090	10-6090	Pin - Pivot 4 7/8 Long	1	
4	R49-2040	32104-42, 32104-95, 32144-44, 49-2040	Bolt - Hex Washer 1/4-20 x 3/4	2	
5	R94-4548	94-4548	Rubber Bumper	2	
6	R453009	01-166-0400, 24-10-BD, 24-9-AD, 32-9650, 3256-2, 3256-23, 3256-3, 3256-67, 3290-217, 3556-3, 4-2390, 7-0152	Washer - Flat 5/16 SAE	3	
6	R310266	3256-23, 3256-3, 3556-3	Washer - Flat 5/16 USS	3	

All original equipment manufacturers names and part numbers are used for identification purposes only, and we are in no way implying that our products are original equipment parts. Prices subject to change without notice.



Replaces Toro Greensmaster 3050 Parts

Traction Unit - Model 04351

Right Hand Pull Frame



Item No	R&R Part No.	OEM Part No.	Description	Qty Req	Order Quantity
7	R322-1	01-178-0504, 20-22-AD, 20-22-AGD, 322-1, 513337	Bolt - Hex HD 5/16-18 x 1/2	3	
8	R453011	01-166-0100, 01-166-0120, 01-166-0270, 01-166-0500, 01-166-0600, 01-166-0620, 132-4593, 2356-3, 237-12, 24-10-AD, 24-11-AD, 24-11-BD, 24-12-AD, 24-12-BD, 30-9310, 32-8190, 3256-24, 3256-3, 3256-36, 3256-4, 453011, 47-9950, 48-9220, 513458, 7-0052	Washer - Flat 3/8 SAE Y/Zinc	2	
9	R3253-21	215-51, 30-8470, 3253-21, Jul-12	Washer - Lock 3/8	2	
10	R11-0160	11-0160	Screw - Roller Shaft	2	

All original equipment manufacturers names and part numbers are used for identification purposes only, and we are in no way implying that our products are original equipment parts. Prices subject to change without notice.



Replaces Toro Greensmaster 3050 Parts

Traction Unit - Model 04351

Right Hand Pull Frame



Item No	R&R Part No.	OEM Part No.	Description	Qty Req	Order Quantity
11	R302-5	21-6010, 302-11, 302-37, 302-47, 302-5, 302-57, 302-58, 302-6, 31-0300, 32-9660, 60-0800, 62-3880, 92-4181	Fitting - Grease	2	
20	R323016	302-33, 323016	Zerk - Grease	1	
21	R114-4683	114-4683	Pin - Hinge 6-1/4 Long	1	
22	R10-6060	10-6060, 120-3199	Pin - Pivot 3-7/8 Long	1	
23	R10-7820	10-7820	Pivot Hinge Assy	1	
24	R10-8110	10-8110	Washer - Pivot Pin	6	
25	R3-0348	3-0348	Bushing	4	
26	R302-60	302-60	Zerk - Grease 90 Deg.	2	
27	R700415	302-2	Zerk - Grease 1/8 PTF 45 Deg	1	
28	R105-3828	105-3828	Spacer - Lift Cyl	1	
29	R10-6110	10-6110	Pin - Hinge 6 1/4 Long	1	
30	R74-3730	217-96, 74-3730	Spacer	1	
31	R94-5588-01	94-5588, 94-5588-01	Bar - Lift RH	1	

Tech Note: 1997-2003:

All original equipment manufacturers names and part numbers are used for identification purposes only, and we are in no way implying that our products are original equipment parts. Prices subject to change without notice.



Replaces Toro Greensmaster 3050 Parts

Traction Unit - Model 04351

Right Hand Pull Frame



Item No	R&R Part No.	OEM Part No.	Description	Qty Req	Order Quantity
31	R107-2599	107-2599	Lift Arm Assy - RH	1	
<i>Tech Note: 2004 & Newer:</i>					
32	R283-8	17-3670, 283-8, Jul-35	Clevis Pin - 1/2 x 1-27/64	1	
33	R110-3951	106-9078, 110-3951	Spring - Torsion - RH	1	
<i>Tech Note: 2004 & Newer:</i>					
34	R237-22	107-8844, 237-22, 237-78	O-Ring	2	
36	R92-9767	92-9767	Hydraulic Hose Assy - RH Lift Cylinder	2	
37	R3M41933		Cable Ties - 6" Bulk Pkg/100	1	
38	R3272-11	01-151-0010, 01-151-0040, 28-18-D, 28-28-D, 3211-72, 3272-11	Pin - Cotter	1	
39	R94-2958	94-2958	Stud - Alloy Ball Joint	2	
40	R3254-6	01-166-0010, 01-166-0280, 01-166-0610, 3253-5, 3254-18, 3254-6, 3290-223, 48-9370	Washer - Lock 3/8	2	
41	R5-1226	5-1226	Spacer	2	
42	R106-9066	106-9066	Hydraulic Cylinder - LH / RH	1	
42	R107-2564	107-2564	Seal Kit - Fits 107-1981 Hyd Cyl	1	

All original equipment manufacturers names and part numbers are used for identification purposes only, and we are in no way implying that our products are original equipment parts. Prices subject to change without notice.



Replaces Toro Greensmaster 3050 Parts

Traction Unit - Model 04351

Right Hand Pull Frame



Item No	R&R Part No.	OEM Part No.	Description	Qty Req	Order Quantity
47	R62-2440	62-2420, 62-2420-01, 62-2440	Arm - Lift RH	2	
<i>Tech Note: 1997-2003:</i>					
49	R57-7650	57-7650	Spring - Torsion Lift Arm	1	
<i>Tech Note: 1997-2003:</i>					
50	R63-8750	57-7630, 63-8750	Clevis Pin	1	
<i>Tech Note: 1997-2003:</i>					
52	R3256-26	01-166-0540, 01-166-0820, 17-2530, 24-13-BD, 30-8570, 3256-26, 356206, 48-9390	Washer - 1/2 in	1	
<i>Tech Note: 1997-2003:</i>					
52	R453017	01-166-0050, 01-166-0240, 01-166-0800, 24-13-AD, 24-14-AD, 32-8110, 3256-26, 3256-6, 453017, 69-8980, 87-7270	Washer - Flat 1/2	1	
<i>Tech Note: 1997-2003:</i>					

All original equipment manufacturers names and part numbers are used for identification purposes only, and we are in no way implying that our products are original equipment parts. Prices subject to change without notice.