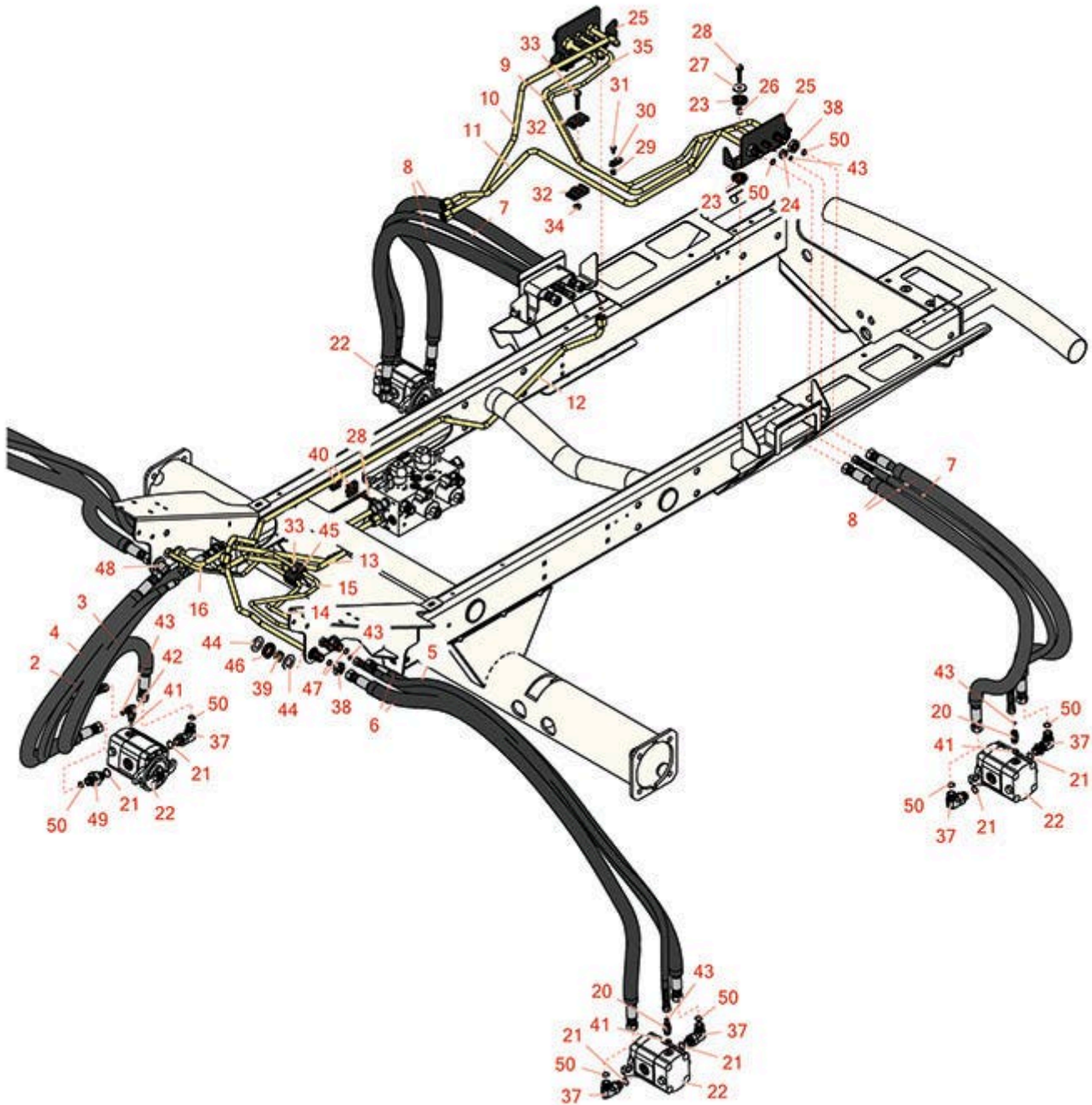
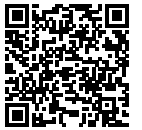




Replaces R&R Products Reel Max 744LP

Parts

Traction Unit
Reel Drive



All original equipment manufacturers names and part numbers are used for identification purposes only, and we are in no way implying that our products are original equipment parts. Prices subject to change without notice.



Replaces R&R Products Reel Max 744LP

Parts

Traction Unit

Reel Drive



Item No	R&R Part No.	OEM Part No.	Description	Qty Req	Order Quantity
Hoses					
2	R106-3671		Hydraulic Hose Assy	1	
3	R106-3670		Hydraulic Hose Assy	1	
4	R106-3669		Hydraulic Hose Assy	1	
5	R106-3680		Hose	2	
6	R114-8868	R106-3678	Hydraulic Hose Assy	4	
7	R98-4590		Hydraulic Hose Assy	2	
8	R106-3672		Hydraulic Hose Assy	4	
9	R108-1702		Tube Assy	1	
10	R108-1703		Tube Assy	1	
11	R108-1701		Tube Assy	1	
12	R108-1705		Tube Assy	1	
13	R110-5287		Tube Assy	1	
14	R110-5288		Tube Assy	1	
15	R110-5286		Tube Assy	1	
16	R108-1708		Tube Assy	1	
Other Parts Available					
20	R340-92		Hydraulic Fitting - Striaight	4	
21	R237-79		O-Ring	10	
22	R110-1717	R108-1447, R92-7387, R98-9999	Hydraulic Motor - Reel	5	
23	R240-11		Bushing - Rubber - Flanged	8	

All original equipment manufacturers names and part numbers are used for identification purposes only, and we are in no way implying that our products are original equipment parts. Prices subject to change without notice.



Replaces R&R Products Reel Max 744LP

Parts

*Traction Unit
Reel Drive*



Item No	R&R Part No.	OEM Part No.	Description	Qty Req	Order Quantity
24	R340-78		Nut - Lock Bulkhead	4	
25	R108-1814-03		Bracket-Bulkhead	2	
26	R99-8611		Spacer	4	
27	R105-3048		Washer - Flat	4	
28	R32144-57		Bolt - Hex Washer 5/16-18 x 1-1/2	5	
29	R104-7201	104-7201	Locknut - 1/4-20 ESNA Flanged	1	
30	R2412-89	R2412-113	Clamp	1	
31	R12-3270	R30-0700, R32104-17, R8-3880, R9266714	Bolt - Hex Washer 1/4-20 x 1/2	1	
32	R56-7976		Clamp - Tube	2	
33	R94-5780		Bolt - 5/16-18 x 1 3/4 Hx Fl	1	
34	R104-8300	R119-4041	Locknut - 5/16-18 Flanged Y/Zinc	1	
35	R108-1704		Line - Hyd	1	
37	R340-98		Hydraulic Fitting	9	
38	R340-127		Nut - Bulkhead	9	
39	R69-8960		Spacer	5	
40	R56-7973		Clamp - Tube	2	
41	R237-22	R107-8844, R232-72, R237-78	O-Ring	11	
42	R340-132		Hydraulic Fitting - 90 Deg	1	
43	R237-21		O-Ring	8	

All original equipment manufacturers names and part numbers are used for identification purposes only, and we are in no way implying that our products are original equipment parts. Prices subject to change without notice.



Replaces R&R Products Reel Max 744LP

Parts

Traction Unit

Reel Drive



Item No	R&R Part No.	OEM Part No.	Description	Qty Req	Order Quantity
44	R69-8930		Washer	10	
45	R56-7972		Clamp - Tube	2	
46	R240-5		Grommet - Rubber	5	
47	R237-65		O-Ring	8	
48	R93-9151		Hydraulic Fitting	1	
49	R340-4		Hydraulic Fitting - Male Connector	1	
50	R237-30	R23-6320	O-Ring - Seal	10	

All original equipment manufacturers names and part numbers are used for identification purposes only, and we are in no way implying that our products are original equipment parts. Prices subject to change without notice.