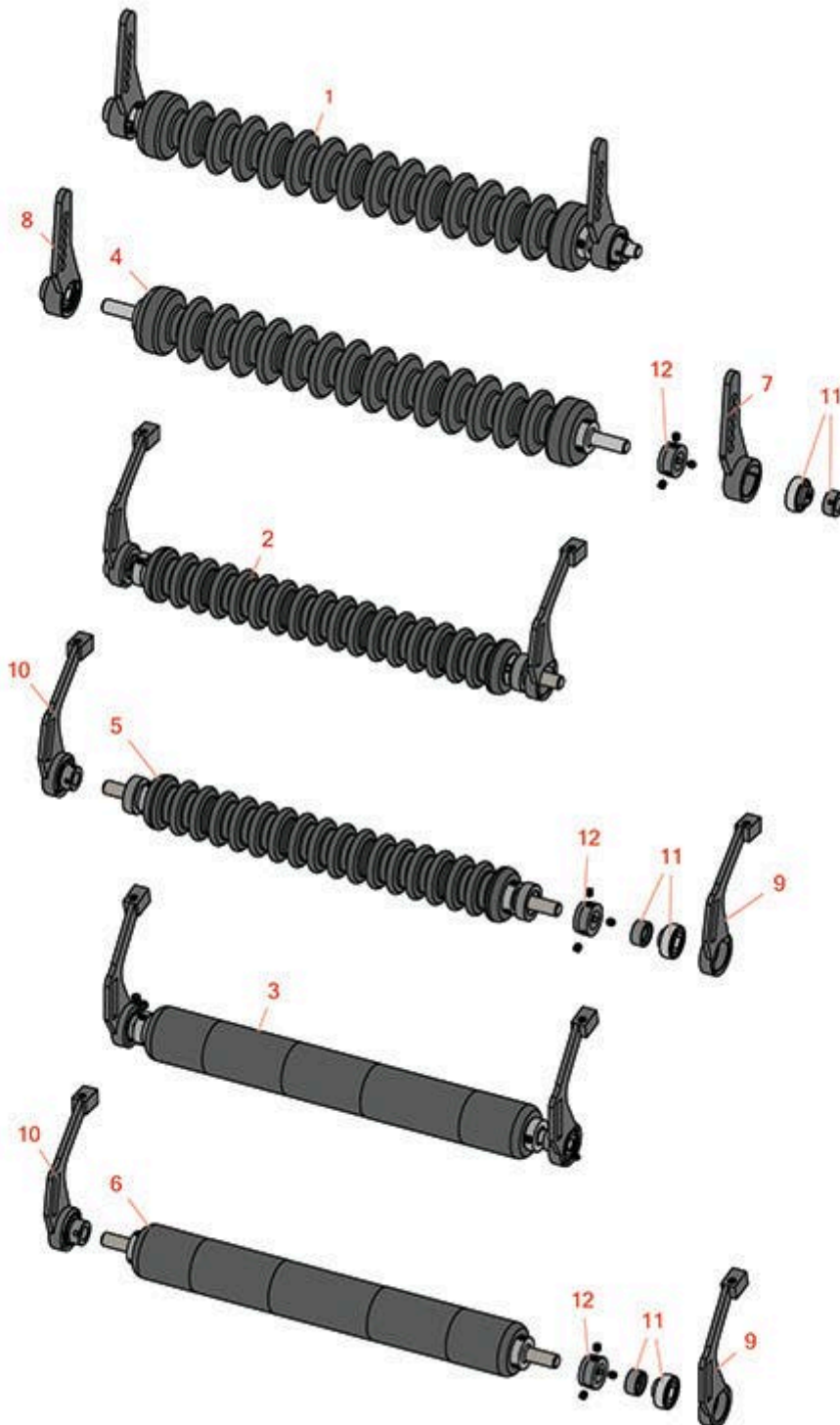




Replaces Toro Reelmaster 5100-D Parts

Cutting Unit - Model 03506 & 03509

Minuteman Roller System



All original equipment manufacturers names and part numbers are used for identification purposes only, and we are in no way implying that our products are original equipment parts. Prices subject to change without notice.



Replaces Toro Reelmaster 5100-D Parts

Cutting Unit - Model 03506 & 03509

Minuteman Roller System



Item No	R&R Part No.	OEM Part No.	Description	Qty Req	Order Quantity
---------	--------------	--------------	-------------	---------	----------------

Complete Minuteman Roller Systems

1	RMT1001		Minuteman Front Grooved Roller System	0	
---	----------------	--	---------------------------------------	---	--

Tech Note: Complete roller systems include roller and two brackets with bearings.:

2	RMT1002		Minuteman Rear Grooved Roller System	0	
---	----------------	--	--------------------------------------	---	--

Tech Note: Complete roller systems include roller and two brackets with bearings.:

3	RMT1003		Minuteman Rear Smooth Roller System	0	
---	----------------	--	-------------------------------------	---	--

Tech Note: Complete roller systems include roller and two brackets with bearings.:

Minuteman Rollers Only

4	RM528		Minuteman Grooved Roller Only	0	
---	--------------	--	-------------------------------	---	--

Tech Note: Use with Minuteman Roller Bracket System Only:

5	RM519		Minuteman Grooved Roller Only	0	
---	--------------	--	-------------------------------	---	--

Tech Note: Use with Minuteman Roller Bracket System Only:

6	RM520		Minuteman Smooth Roller Only	0	
---	--------------	--	------------------------------	---	--

Tech Note: Use with Minuteman Roller Bracket System Only:

Other Parts Available

7	RT121		Bracket - Front LH	1	
---	--------------	--	--------------------	---	--

8	RT122		Bracket - Front RH	1	
---	--------------	--	--------------------	---	--

9	RT131		Bracket - Rear LH	1	
---	--------------	--	-------------------	---	--

10	RTM132		Bracket - Rear RH	1	
----	---------------	--	-------------------	---	--

11	RMMB157		Bearing w/Locking Collar	2	
----	----------------	--	--------------------------	---	--

12	RMM3		End Hub - 7/8 ID	2	
----	-------------	--	------------------	---	--

All original equipment manufacturers names and part numbers are used for identification purposes only, and we are in no way implying that our products are original equipment parts. Prices subject to change without notice.