

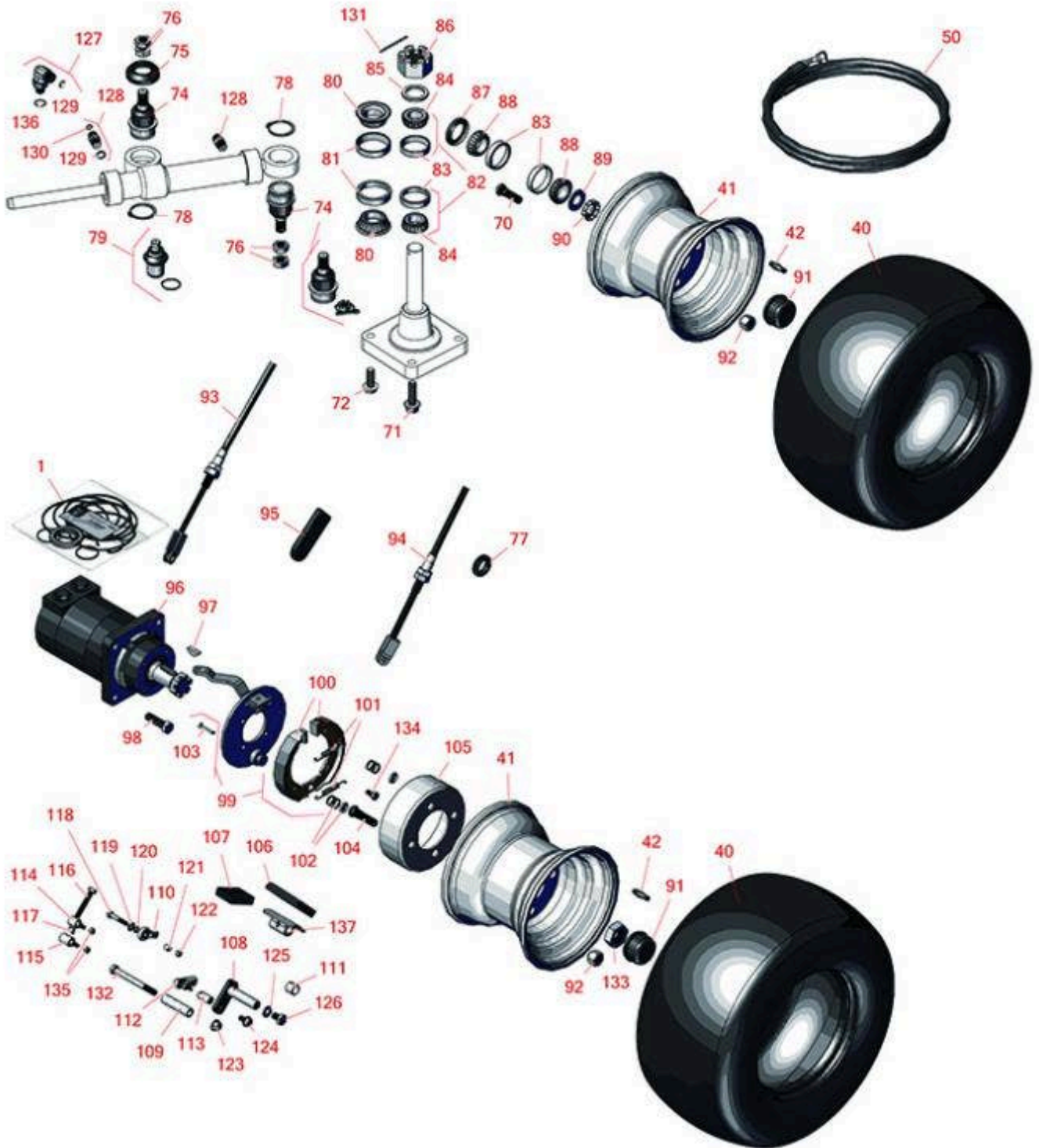


# Replaces Toro Greensmaster TriFlex

## 3300 Parts

*Traction Unit - Model 04510*

*Front & Rear Wheels*



All original equipment manufacturers names and part numbers are used for identification purposes only, and we are in no way implying that our products are original equipment parts. Prices subject to change without notice.



# Replaces Toro Greensmaster TriFlex 3300 Parts

Traction Unit - Model 04510  
Front & Rear Wheels



Item No	R&R Part No.	OEM Part No.	Description	Qty Req	Order Quantity
---------	--------------	--------------	-------------	---------	----------------

## Overhaul Kits

1	<b>R76-0800</b>	100-6131, 76-0800, 94-8178	Seal Kit - Hyd Wheel Motor	1	
---	-----------------	----------------------------------	----------------------------	---	--

## Tires

40	<b>R120-2783</b>	120-2783	Tire - 19x10.5-8 (4-Ply) Smooth	3	
41	<b>R217-60</b>	217-60, 242-49	Wheel - with Valve Stem - White	3	
42	<b>R232-27</b>	232-27, 232-31	Stem - Valve w/ Cap	3	

## Hoses

50	<b>R119-8123</b>	119-8123	Hydraulic Hose Assy	1	
50	<b>R119-8124</b>	119-8124	Hydraulic Hose Assy	1	
50	<b>R125-5168</b>	125-5168	Hydraulic Hose Assy	1	
50	<b>R117-3683</b>	117-3683	Hydraulic Hose Assy	1	
50	<b>R125-5166</b>	125-5166	Hydraulic Hose Assy	1	

## Other Parts Available

70	<b>R114-3918</b>	1-633926, 114-3918	Stud - Wheel	8	
71	<b>R3234-22</b>	3234-22	Bolt - 1/2-13 x 1 3/4 Hx HD Fl	2	
72	<b>R3234-38</b>	3234-38	Bolt - Flanged Hex 1/2-13 x 1-1/4	2	
74	<b>R117-9875</b>	117-9875	Ball Joint	2	
74	<b>R121-3605</b>	121-3605, R121-3605	Ball Joint	2	
75	<b>R120-2026</b>	120-2026	Spacer - Cylinder	1	

All original equipment manufacturers names and part numbers are used for identification purposes only, and we are in no way implying that our products are original equipment parts. Prices subject to change without notice.



# Replaces Toro Greensmaster TriFlex 3300 Parts

Traction Unit - Model 04510  
Front & Rear Wheels



Item No	R&R Part No.	OEM Part No.	Description	Qty Req	Order Quantity
76	<b>R443828</b>	01-191-1018, 3214, 3220-6, 443828, 915089P	Nut - 5/8-18 Hex	3	
77	<b>R240-5</b>	240-5	Grommet - Rubber	2	
78	<b>R32151-104</b>	32151-104	Ring - Retaining, Ex	2	
79	<b>R132-6959</b>	117-6658, 132-6959	Ball Joint	2	
80	<b>R254-70</b>	115-9472, 254-70	Tapered Bearing Cone - w/Seal	1	
81	<b>R254-61</b>	01-103-0090, 115-9471, 254-61, 92-0611, 93-4850	Cup	2	
82	<b>R500596</b>		Tapered Bearing Set - Cup and Cone	2	
83	<b>R254-72</b>	01-103-0050, 01-103-0120, 01-103-0140, 1-543508, 254-71, 254-72, 40439, 62-3340, 99-4511	Cup - Bearing	2	
84	<b>R254-94</b>	1-543509, 254-94, 32-8090, 32-8240, 32-9640, 40440, 62-3330	Tapered Bearing Cone	2	
85	<b>R18-6320</b>	18-6320	Washer - Steering Fork	1	
86	<b>R32136-9</b>	32136-9	Nut - 1-1/4-12 Slotted	1	

All original equipment manufacturers names and part numbers are used for identification purposes only, and we are in no way implying that our products are original equipment parts. Prices subject to change without notice.



# Replaces Toro Greensmaster TriFlex 3300 Parts

Traction Unit - Model 04510  
Front & Rear Wheels



Item No	R&R Part No.	OEM Part No.	Description	Qty Req	Order Quantity
87	<b>R112-1690</b>	112-1690	Seal - Hub	1	
88	<b>R254-92</b>	01-102-0070, 01-102-0120, 254-92, 95-2646, 99-4501	Tapered Bearing Cone	2	
89	<b>R117-8259</b>	117-8259	Washer-Spindle	1	
90	<b>R93-0307</b>	93-0307	Nut - Lock Retainer	1	
91	<b>R241-119</b>	01-269-0070, 01-269-0280, 01-286-0040, 241-119, 30-9930, 40438	Cap-Dust	3	
92	<b>R242-50</b>	242-50	Nut - 1/2-20 Wheel	12	
93	<b>R115-9412</b>	115-9412	Cable- Brake - RH	1	
94	<b>R114-9996</b>	114-9996	Cable- Brake - LH	1	
95	<b>R21-1880</b>	21-1880	Grip-Handle	1	
96	<b>R117-4302</b>	117-4302	Hydraulic Motor - RH Wheel	1	
96	<b>R117-4303</b>	117-4303	Hydraulic Motor - LH Wheel	1	
97	<b>R3257-42</b>	3257-42	Key - Woodruff 5/16 x 1	2	
98	<b>R325-7</b>	01-150-0380, 01-178-0814, 3226-3, 325-7, 48-9490	Bolt - 1/2-13 x 1 3/4 Hex HD Gr 5	8	
99	<b>R115-9441</b>	115-9441, 139-2722	Brake Assy - RH	1	
99	<b>R115-9440</b>	115-9440, 139-2721	Brake Assy - LH	1	

All original equipment manufacturers names and part numbers are used for identification purposes only, and we are in no way implying that our products are original equipment parts. Prices subject to change without notice.



# Replaces Toro Greensmaster TriFlex 3300 Parts

*Traction Unit - Model 04510  
Front & Rear Wheels*



Item No	R&R Part No.	OEM Part No.	Description	Qty Req	Order Quantity
100	<b>R151420</b>		Brake Shoe	4	
101	<b>R151421</b>		Return Spring - Brake	2	
102	<b>R151422</b>		Spring - Hold Down - Brake	2	
103	<b>R151424</b>		Stud - Keeper - Brake	2	
104	<b>R85-6540</b>	85-6540	Stud - Drive 1/2-20 x 2	12	
105	<b>R115-2663</b>	115-2663	Drum - Brake	2	
106	<b>R74-9100</b>	74-9100	Rubber Foot Pad - Forward	1	
107	<b>R74-9110</b>	74-9110	Rubber Foot Pad - Reverse	1	
108	<b>R94-1300</b>	94-1300	Lock-Neutral	1	
109	<b>R94-1371</b>	94-1371	Spacer	1	
110	<b>R2411-41</b>	2411-41	Rod End - Ball Joint	1	
111	<b>R256-311</b>	256-311, 94-1388	Bushing-Split	1	
112	<b>R2411-38</b>	2411-38	Ball Joint	1	
113	<b>R94-1386</b>	94-1386	Shaft-Pedal, Pivot	1	
114	<b>R94-1374</b>	94-1374	Trunnion - Bracket	1	
115	<b>R94-1375</b>	94-1375	Trunnion - Bracket	1	
116	<b>R94-3489</b>	75-8530, 94-3489	Bolt - Hex HD M8 x 50	1	
117	<b>R33014-00</b>	33014-00, 42-9580	Nut - Jam 8mm x 1.25	1	

All original equipment manufacturers names and part numbers are used for identification purposes only, and we are in no way implying that our products are original equipment parts. Prices subject to change without notice.



# Replaces Toro Greensmaster TriFlex 3300 Parts

*Traction Unit - Model 04510  
Front & Rear Wheels*



Item No	R&R Part No.	OEM Part No.	Description	Qty Req	Order Quantity
118	<b>R400116</b>	20-7-AD, 30-9680, 321-69, 321-9, 3222-3, 400116	Bolt - Hex HD 1/4-20 x 1-1/2	1	
119	<b>R3256-22</b>	24-9-BD, 3-1032, 3256-1, 3256-22, 93-0954, 93-0989	Washer - Flat 1/4 Yellow	1	
120	<b>R24M7139</b>	24M7139, 3256-16, 33093-00, 43-5930	Washer - Flat 6mm	1	
121	<b>R99-3545</b>	99-3545	Spacer	1	
122	<b>R3296-56</b>	3296-56	Nut - Lock - 1/4-20 ESNA Jam	1	
123	<b>R104-8301</b>	104-8301, 104-9301, 109-6658, 133-7570	Locknut - 3/8-16 Nylon Flanged	1	
124	<b>R33114-016</b>	33114-016, 42-9230, 42-9270, 48-7680, 48-7690, 48-7700	Bolt - Hx HD 8mm x 1.25 x 15	1	

All original equipment manufacturers names and part numbers are used for identification purposes only, and we are in no way implying that our products are original equipment parts. Prices subject to change without notice.



# Replaces Toro Greensmaster TriFlex 3300 Parts

Traction Unit - Model 04510  
Front & Rear Wheels



Item No	R&R Part No.	OEM Part No.	Description	Qty Req	Order Quantity
125	<b>R453011</b>	01-166-0100, 01-166-0120, 01-166-0270, 01-166-0500, 01-166-0600, 01-166-0620, 132-4593, 2356-3, 237-12, 24-10-AD, 24-11-AD, 24-11-BD, 24-12-AD, 24-12-BD, 30-9310, 32-8190, 3256-24, 3256-3, 3256-36, 3256-4, 453011, 47-9950, 48-9220, 513458, 7-0052	Washer - Flat 3/8 SAE Y/Zinc	1	
126	<b>R33115-016</b>	33115-016	Bolt - Hex HD M10 x 16	1	
127	<b>R340-18</b>	340-18	Hydraulic Fitting	2	
128	<b>R340-92</b>	340-92	Hydraulic Fitting - Striaight	2	
129	<b>R237-22</b>	107-8844, 237-22, 237-78	O-Ring	4	
130	<b>R237-21</b>	237-21, 327-21	O-Ring	4	
131	<b>R3272-37</b>	3272-37	Pin - Cotter 1/4 x 2-1/2	1	
132	<b>R323-42</b>	01-178-0630, 323-42	Bolt - Hx HD 3/8-16 x 3 3/4	1	
133	<b>R26-3790</b>	26-3790	Nut - Hex - Wheel Motor 1-20	1	

All original equipment manufacturers names and part numbers are used for identification purposes only, and we are in no way implying that our products are original equipment parts. Prices subject to change without notice.



# Replaces Toro Greensmaster TriFlex 3300 Parts

*Traction Unit - Model 04510  
Front & Rear Wheels*



Item No	R&R Part No.	OEM Part No.	Description	Qty Req	Order Quantity
134	<b>R322-2</b>	322-2, 513338P	Bolt - Hex HD 5/16-18 x 5/8	4	
135	<b>R33023-00</b>	33023-00, 48-7900, 49-7810	Locknut - ESNA 6mm x 1.0	2	
136	<b>R237-79</b>	237-79	O-Ring	1	
137	<b>R49-6440-03</b>	117-9507, 49-6440, 49-6440-03	Pedal - Forward Assy	1	

All original equipment manufacturers names and part numbers are used for identification purposes only, and we are in no way implying that our products are original equipment parts. Prices subject to change without notice.