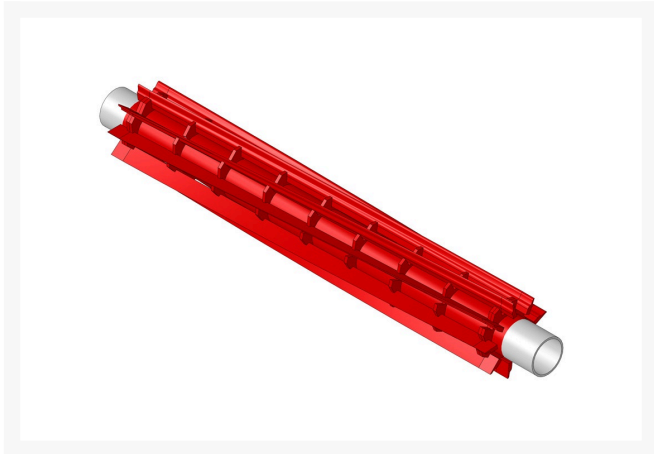




Reel - 9 Blade

R4-2219



Details

R&R Reel blades are manufactured from high carbon-boron alloy steel and then hardened to RC46-49 to match the temper of our bedknives and original equipment bedknives. All R&R Reels are cylindrically ground on bearing surfaces and then relief ground. Reels are then precision computer balanced for extended bearing and reel life. R&R Products Reels are guaranteed against defects in material and workmanship for the life of the reel under normal use.

- High Carbon-Boron Alloy Steel
- Cylindrically Ground on Bearing Surfaces
- Precision Computer Balanced

Replaces

R&R Products	R3-5795, R3-8780, R3-9930, R3-9940, R5-0510, R5-0725, R5-1396, R5-3503
Toro	4-2219, 5-0510, 5-0725, 5-1396, Mar-30, Mar-40, Mar-80, Mar-95, May-03

Specifications

Manufacturer	R&R Products
--------------	--------------

Fits Models

Toro Greensmaster 21"

Gritmaster

309 Percy Osborn Road Morningside, 4001
0313035785

<https://gritmaster.rrproducts.com/>



Reel - 9 Blade

R4-2219



Replacement Parts

R253-120	Seal
R254-67	Cup - Bearing
R254-68	Tapered Bearing Cone
R254-86	Nut - Lock Reel
R254-87	Washer - Reel Assy.
R302-5	Fitting - Grease
R32151-12	Ring - Retaining 11/16
R5-1393	Shaft - Reel

Gritmaster

309 Percy Osborn Road Morningside, 4001
0313035785

<https://gritmaster.rrproducts.com/>