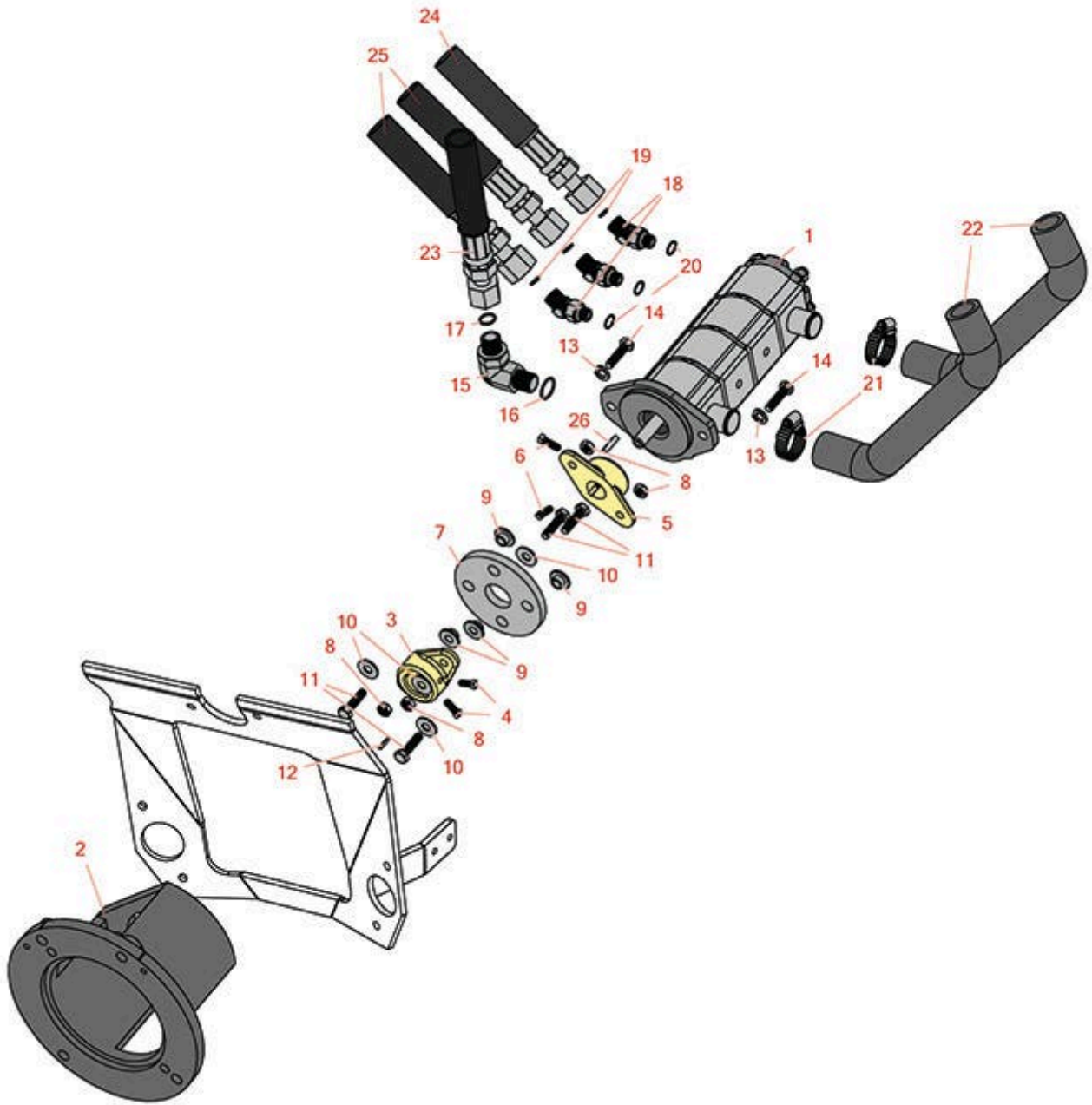




# Replaces Toro Greensmaster 3050 Parts

*Traction Unit - Model 04351*

*Hydraulic Gear Pump*



All original equipment manufacturers names and part numbers are used for identification purposes only, and we are in no way implying that our products are original equipment parts. Prices subject to change without notice.



# Replaces Toro Greensmaster 3050 Parts

*Traction Unit - Model 04351*

*Hydraulic Gear Pump*



| Item No | R&R Part No.       | OEM Part No.   | Description                  | Qty Req | Order Quantity |
|---------|--------------------|--|------------------------------|---------|----------------|
| 1       | <b>R107-2565</b>   | 107-2565,<br>107-2565-03   | Gear Pump - 4 Section        | 1       |                |
| 2       | <b>R83-1060-03</b> | 83-1060,<br>83-1060-03   | Adapter - Pump               | 1       |                |
| 3       | <b>R27-1960</b>    | 110-5236,<br>27-1960   | Hub - Engine                 | 1       |                |
| 4       | <b>R3241-2</b>     | 01-163-0100,<br>31-6770,<br>3241-1,<br>3241-2  | Screw - Set Sq.HD. 1/4 x 5/8 | 2       |                |
| 5       | <b>R27-1970</b>    | 27-1970  | Hub - Pump                   | 1       |                |
| 6       | <b>R3241-6</b>     | 3241-6   | Screw - Set Sq. HD. 1/4 x3/4 | 2       |                |
| 7       | <b>R44-2230</b>    | 115-4523,<br>27-6560,<br>44-2230,<br>80-8650   | Coupling - Rubber - Pump     | 1       |                |
| 8       | <b>R3296-29</b>    | 1-804256,<br>3290-357,<br>3296-29,<br>915662P  | Locknut - 5/16-18 ESNA       | 4       |                |
| 9       | <b>R27-6600</b>    | 27-6600  | Spacer - Pump Coupling       | 4       |                |
| 10      | <b>R453009</b>     | 01-166-0400,<br>24-10-BD,<br>24-9-AD,<br>32-9650,<br>3256-2,<br>3256-23,<br>3256-3,<br>3256-67,<br>3290-217,<br>3556-3,<br>4-2390,<br>7-0152 | Washer - Flat 5/16 SAE       | 4       |                |

All original equipment manufacturers names and part numbers are used for identification purposes only, and we are in no way implying that our products are original equipment parts. Prices subject to change without notice.



# Replaces Toro Greensmaster 3050 Parts

*Traction Unit - Model 04351*

*Hydraulic Gear Pump*



| Item No | R&R Part No.    | OEM Part No.  | Description                       | Qty Req | Order Quantity |
|---------|-----------------|---|-----------------------------------|---------|----------------|
| 11      | <b>R400190</b>  | 01-150-0720,<br>01-178-0510,<br>30-8680,<br>322-6,<br>513343  | Bolt - Hex HD 5/16-18 x 1-1/4 GR5 | 4       |                |
| 12      | <b>R1164</b>    | 10-7070,<br>48-004-1931,<br>62-3380,<br>66-004-3221,<br>85-9020   | Key - 1/4 x 1/4 x 1               | 2       |                |
| 13      | <b>R3253-21</b> | 215-51,<br>30-8470,<br>3253-21,<br>Jul-12   | Washer - Lock 3/8                 | 2       |                |
| 14      | <b>R400264</b>  | 01-150-0180,<br>01-178-0610,<br>20-48-AD,<br>20-48-AGD,<br>32-9160,<br>3224-3,<br>323-29,<br>323-7,<br>400264,<br>908035P | Bolt - Hex HD 3/8-16 x 1-1/4      | 2       |                |
| 15      | <b>R340-105</b> | 340-105   | Hydraulic Fitting                 | 1       |                |
| 16      | <b>R237-80</b>  | 237-80,<br>327-80   | O-Ring                            | 1       |                |
| 17      | <b>R237-30</b>  | 23-6320,<br>237-30  | O-Ring - Seal                     | 1       |                |
| 18      | <b>R340-87</b>  | 340-106,<br>340-87  | Hydraulic Fitting                 | 3       |                |
| 19      | <b>R237-22</b>  | 107-8844,<br>237-22,<br>237-78  | O-Ring                            | 3       |                |
| 20      | <b>R237-42</b>  | 237-42,<br>31-4160  | O-Ring                            | 3       |                |

All original equipment manufacturers names and part numbers are used for identification purposes only, and we are in no way implying that our products are original equipment parts. Prices subject to change without notice.



# Replaces Toro Greensmaster 3050 Parts

*Traction Unit - Model 04351*

*Hydraulic Gear Pump*



| Item No | R&R Part No.     | OEM Part No.        | Description                          | Qty Req | Order Quantity |
|---------|------------------|---------------------|--------------------------------------|---------|----------------|
| 21      | <b>R2412-34</b>  | 2412-34,<br>31-0120 | Clamp - Hose .75-1.5                 | 1       |                |
| 22      | <b>R83-0910</b>  | 83-0910             | Hose - Outside Inlet - Pump          | 2       |                |
| 22      | <b>R95-5966</b>  | 95-5966             | Hose - Inlet - Pump - Metal Tank     | 2       |                |
| 23      | <b>R112-0205</b> | 112-0205            | Hydraulic Hose Assy - LH Drive Motor | 1       |                |
| 24      | <b>R98-2150</b>  | 98-2150             | Hydraulic Hose Assy - Valve to Pump  | 1       |                |
| 25      | <b>R98-0649</b>  | 98-0649             | Hydraulic Hose Assy - Valve to Pump  | 2       |                |
| 26      | <b>R5-0946</b>   | 5-0946              | Key - 3/16 x 3/16 x 1-1/8            | 1       |                |

All original equipment manufacturers names and part numbers are used for identification purposes only, and we are in no way implying that our products are original equipment parts. Prices subject to change without notice.