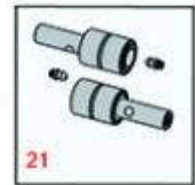
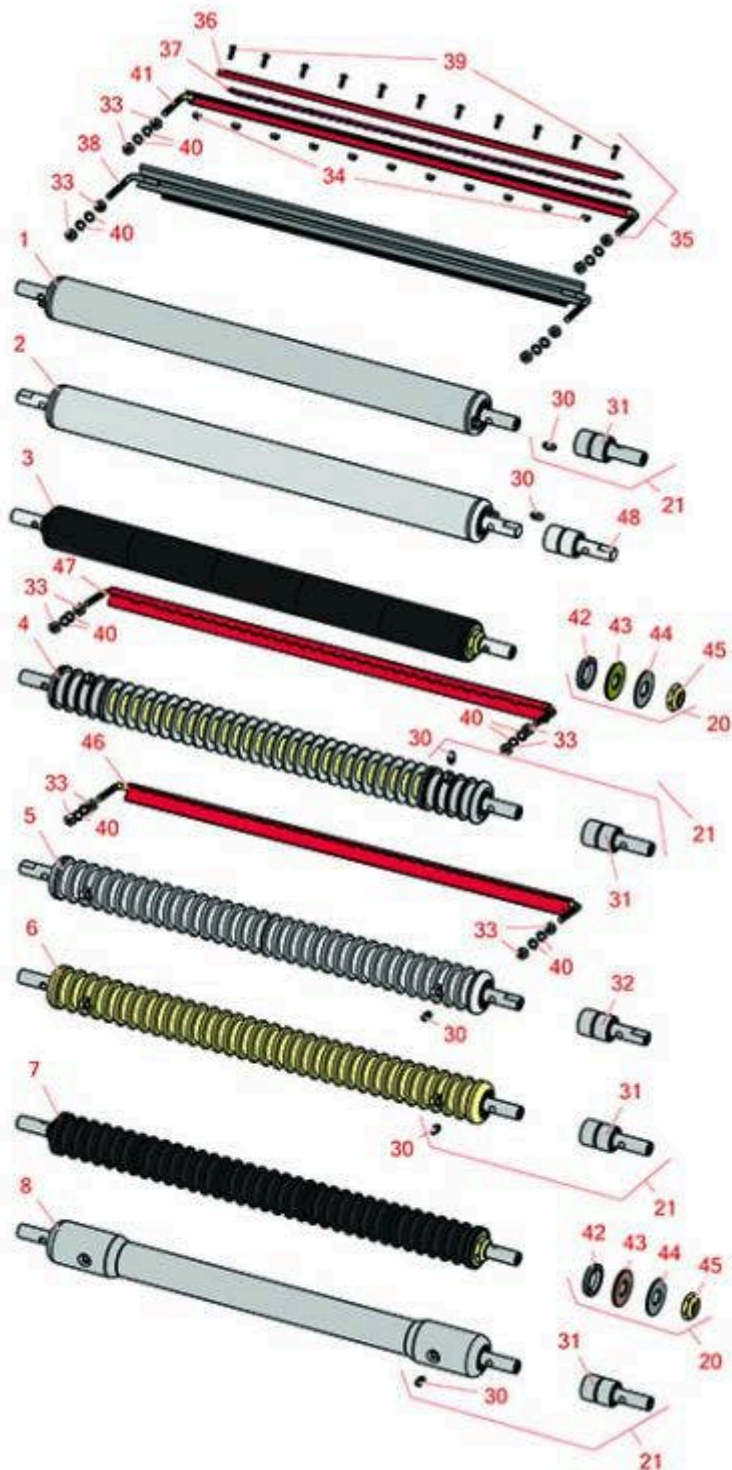




# Replaces Toro Greensmaster 3050 Parts

SPA Cutting Unit - Models 04478  
Front Rollers



All original equipment manufacturers names and part numbers are used for identification purposes only, and we are in no way implying that our products are original equipment parts. Prices subject to change without notice.



# Replaces Toro Greensmaster 3050 Parts

SPA Cutting Unit - Models 04478

Front Rollers



Item No	R&R Part No.	OEM Part No.	Description	Qty Req	Order Quantity
1	<b>R21-6440</b>	20-8950, 21-6440, 23-5110, 52-3170, Nov-80	Roller - Smooth Tubular Steel	1	
<i>Tech Note: This tubular steel roller uses greasable "water-pump" style bearings. :</i>					
2	<b>R52-3120</b>	51-3120, 52-3120, Oct-70	Roller - Smooth Tubular Steel	1	
<i>Tech Note: Constructed with "water-pump" style bearings.:</i>					
3	<b>R150340</b>		Roller - Smooth UHMW Polyethylene	1	
<i>Tech Note: Machined from solid UHMW, this low maintenance roller uses a 1" solid stainless steel shaft and requires no grease. UHMW material prevents build-up of debris.:</i>					
4	<b>R21-6540</b>	21-6540	Roller - Grooved Repairable Steel	1	
<i>Tech Note: Constructed with greasable "water-pump" style bearings, this roller can be repaired by unscrewing the ends and replacing the series of washers and spacers.:</i>					
5	<b>R88-6790</b>	88-6790	Roller - Grooved Machined Solid Aluminum	1	
<i>Tech Note: Machined from solid aluminum, this light weight machined grooved roller uses greasable "water-pump" style bearings.:</i>					
6	<b>R52-3200</b>	12-0840, 52-3200, 71-1550	Roller - Grooved Machined Solid Steel	1	
<i>Tech Note: Machined from solid steel, this heavy weight roller uses greasable "water-pump" style bearings.:</i>					
7	<b>R150335</b>		Roller - Grooved UHMW Polyethylene	1	

All original equipment manufacturers names and part numbers are used for identification purposes only, and we are in no way implying that our products are original equipment parts. Prices subject to change without notice.



# Replaces Toro Greensmaster 3050 Parts

SPA Cutting Unit - Models 04478

Front Rollers



Item No	R&R Part No.	OEM Part No.	Description	Qty Req	Order Quantity
---------	--------------	--------------	-------------	---------	----------------

*Tech Note: Machined from solid UHMW, this low maintenance roller rotates around a 1" solid stainless steel shaft and requires no bearings or grease. Patented groove design and smooth UHMW material prevents build-up of debris.:*

8	<b>R21-6470</b>	10-5000, 21-6470, 52-3590	Roller - Swaged Machined Solid Aluminum	1	
---	-----------------	---------------------------------	---	---	--

*Tech Note: Constructed with "water-pump" style bearings, this roller is machined from solid aluminum and contacts the ground only on the outer 2-7/8" of the roller.:*

## Overhaul Kits

20	<b>R101395</b>		Overhaul Kit - UHMW Roller	0	
----	----------------	--	----------------------------	---	--

*Tech Note: Fits all R&R 2" Dia. Black UHMW Polyethylene Rollers. Includes 10 ea.: R150322 Roll Pins; 2 ea.: R3296-15 Locknuts, R150347T Teflon Seals, R150333 Thrust Washers, & R150334A Bronze Thrust Washers:*

21	<b>R107-1588</b>	107-1588	Overhaul Kit - Roller	0	
----	------------------	----------	-----------------------	---	--

*Tech Note: Includes 2 ea.: R302-5 Grease Fittings & R52-3180 Bearings:*

## Other Parts Available

30	<b>R302-5</b>	21-6010, 302-11, 302-37, 302-47, 302-5, 302-57, 302-58, 302-6, 31-0300, 32-9660, 60-0800, 62-3880, 92-4181	Fitting - Grease	2	
----	---------------	--	------------------	---	--

31	<b>R52-3180</b>	21-6410, 52-3180	Bearing - Front Roller	2	
----	-----------------	---------------------	------------------------	---	--

32	<b>R52-3210</b>	52-3210	Bearing - w/Milled Flat	2	
----	-----------------	---------	-------------------------	---	--

All original equipment manufacturers names and part numbers are used for identification purposes only, and we are in no way implying that our products are original equipment parts. Prices subject to change without notice.



# Replaces Toro Greensmaster 3050 Parts

SPA Cutting Unit - Models 04478

Front Rollers



Item No	R&R Part No.	OEM Part No.	Description	Qty Req	Order Quantity
33	<b>R3219-1</b>	01-158-0590, 01-188-0428, 3219-1	Nut - 1/4-28	4	
34	<b>R3296-9</b>	32127-17, 3296-9	Locknut - Comb	11	
35	<b>R11-0070</b>	11-0070	Comb - Assy	1	
36	<b>R8-2520</b>	8-2520, 8-2520-01	Support - Comb	1	
37	<b>R8-2530</b>	8-2530	Comb - Urethane	1	
38	<b>R33-1000</b>	33-1000	Brush Assy	1	
39	<b>R3249-3</b>	3249-3	Screw - Comb	11	
40	<b>R3254-8</b>	3254-8	Washer - Lock 1/4 Int Star Z	4	
41	<b>R11-0069</b>	11-0069	Frame - Only Comb Assy	1	
42	<b>R150347T</b>		Seal - Nonstick Lip	2	
43	<b>R150334A</b>		Washer - Thrust SAE660 Bronze	2	
44	<b>R150333</b>		Washer - Flat Keyed Outer SS	2	
45	<b>R3296-15</b>	116-7306, 32118-5, 32127-23, 32127-47, 3296-15	Locknut - 3/4-16 Nylon Jam	2	
46	<b>R151359</b>		Scraper - R&R Grooved Roller .625 in Spacing	1	
<i>Tech Note: Fits R&amp;R R88-6790 &amp; R52-3200 Rollers:</i>					
47	<b>R65-8340-01</b>	65-8340, 65-8340-01	Scraper - Grooved Roller .43 in Spacing	1	
<i>Tech Note: Fits OEM 93-9045 grooved roller:</i>					

All original equipment manufacturers names and part numbers are used for identification purposes only, and we are in no way implying that our products are original equipment parts. Prices subject to change without notice.



# Replaces Toro Greensmaster 3050 Parts

*SPA Cutting Unit - Models 04478  
Front Rollers*



Item No	R&R Part No.	OEM Part No.	Description	Qty Req	Order Quantity
48	<b>R21-8430</b>	21-8430	Bearing - Roller	2	

All original equipment manufacturers names and part numbers are used for identification purposes only, and we are in no way implying that our products are original equipment parts. Prices subject to change without notice.