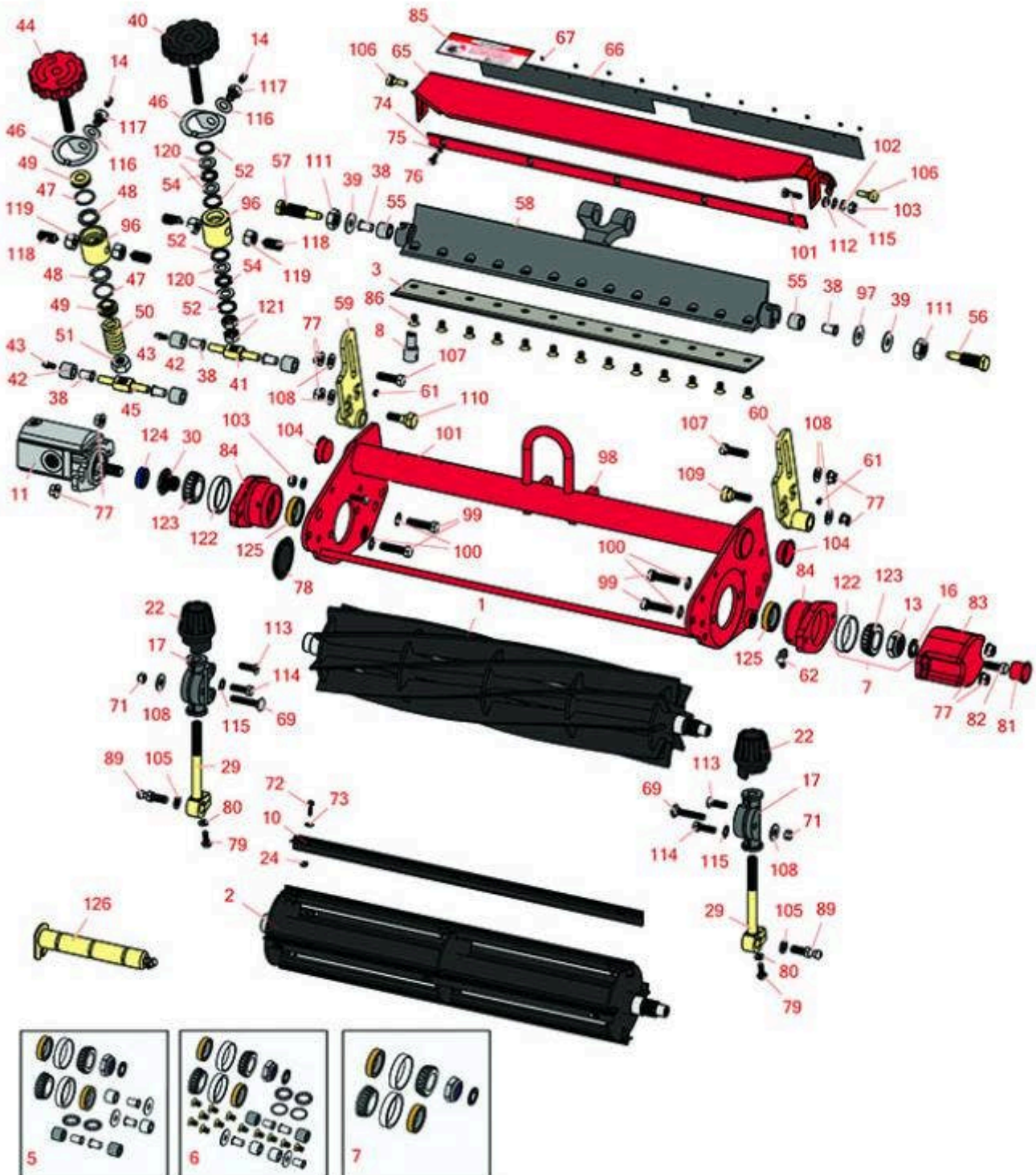




# Replaces Toro Greensmaster 3000 Parts

SPA Cutting Unit - Models 04445, 04448 & 04450  
Reel & Bedknife



All original equipment manufacturers names and part numbers are used for identification purposes only, and we are in no way implying that our products are original equipment parts. Prices subject to change without notice.



# Replaces Toro Greensmaster 3000 Parts

SPA Cutting Unit - Models 04445, 04448 & 04450  
Reel & Bedknife



Item No	R&R Part No.	OEM Part No.	Description	Qty Req	Order Quantity
<b>R&amp;R Reels, Lifetime Guaranteed</b>					
1	<b>R150760</b>		Reel - 14 Blade	1	
1	<b>R12-2789</b>	12-2789, 130-6470	Reel - 11 Blade	1	
1	<b>R5-3195</b>	5-3195	Reel - 9 Blade	1	
1	<b>R5-3189</b>	12-3599, 130-6469, 5-3189	Reel - 8 Blade	1	
1	<b>R5-3189H</b>		Reel - 8 Blade Heavy Duty	1	
1	<b>R5-3206</b>	5-3206	Reel - 6 Blade	1	
1	<b>R5-3205</b>	12-0729, 12-8779, 5-3205	Reel - 5 Blade	1	
1	<b>R5-3215</b>	5-3215	Reel - 5 Blade Heavy Duty	1	
1	<b>R5-3200</b>	5-3200	Reel - 4 Blade	1	
1	<b>R14-0659</b>	14-0659, 57-5300	Reel - 5 Blade Heavy Duty	0	
2	<b>R150480</b>		Brush Reel	1	
<b>R&amp;R Bedknives, Lifetime Guaranteed</b>					
3	<b>R150466</b>	63-8600, 64-6393, 94-6393	Bedknife - Super Thick .312 - 1.00 HOC	1	
3	<b>R150462</b>	63-8610, 94-6396	Bedknife - 7 Hole Thick 5/16	1	
3	<b>R94-6396</b>	10-4900, 54-9150, 94-6396, Oct-00	Bedknife - High Cut 5/16"-1" HOC	1	

All original equipment manufacturers names and part numbers are used for identification purposes only, and we are in no way implying that our products are original equipment parts. Prices subject to change without notice.



# Replaces Toro Greensmaster 3000 Parts

SPA Cutting Unit - Models 04445, 04448 & 04450  
Reel & Bedknife



Item No	R&R Part No.	OEM Part No.	Description	Qty Req	Order Quantity
3	<b>R63-8610</b>	63-8610	Bedknife - Fairway Cut .375 - 1.00 HOC	1	
3	<b>R94-6392</b>	62-2500, 94-6392	Bedknife - High Cut .312 - 1.00 HOC	1	
3	<b>R93-4264</b>	57-4960, 63-8470, 93-4264	Bedknife - Low Cut .187 - 1.00 HOC	1	
3	<b>R93-4263</b>	63-8560, 66-9320, 93-4263, 93-6039	Bedknife - Tournament Cut .125 - .500 HOC	1	
3	<b>R94-6394</b>	51-2610, 63-8550, 94-6394	Bedknife - Tournament 1/8-1/2 HOC	1	
3	<b>R94-6395</b>	17-7040, 19-8880, 62-2510, 63-8500, 94-6395	Bedknife - Low Cut 3/16"-1" HOC	1	
3	<b>R93-4262</b>	65-8250, 93-4262, 93-4263	Bedknife - Micro Cut .062 - .187 HOC	1	

## ***R&R Razor Tool Steel Bedknives, Lifetime Guaranteed***

2	<b>R115-1881</b>	115-1881	Bedknife - Razor Tool Steel - 21 Tournament Cut .125 - .500 HOC	1	
<i>Tech Note: Razor Tool Steel Bedknives are constructed from high grade tool steel for extended life and optimum cut.:</i>					
2	<b>R115-1880</b>	115-1880	Bedknife - Razor Tool Steel - 21 Micro Cut .062 - .187 HOC	1	
<i>Tech Note: Razor Tool Steel Bedknives are constructed from high grade tool steel for extended life and optimum cut.:</i>					

## ***Overhaul Kits & Service Tools***

All original equipment manufacturers names and part numbers are used for identification purposes only, and we are in no way implying that our products are original equipment parts. Prices subject to change without notice.



# Replaces Toro Greensmaster 3000 Parts

SPA Cutting Unit - Models 04445, 04448 & 04450  
Reel & Bedknife



Item No	R&R Part No.	OEM Part No.	Description	Qty Req	Order Quantity
5	<b>R255-310</b>	255-310	Overhaul Kit - Cutting Unit	0	
<i>Tech Note: Includes 4 ea: R52-2890 Bushings; 2 ea: R237-77 O-Rings, R253-96 Seals, R254-72 Cups, R254-94 Bearings, R52-2900 Washers, R57-5280 Bearings, R62-5510 Bushings, R63-9510 Bushings; 1 ea: R253-61 Seal &amp; R32127-46 Locknut:</i>					
6	<b>R13-3659</b>	13-3659	Overhaul Kit - Cutting Unit	0	
<i>Tech Note: Includes 13 ea.:R150477 Screws; 4 ea.: R52-2890 Bushings; 2 ea.: R237-77 O-rings, R253-96 Seals, R254-72 Bearing Cups, R254-94 Bearings, R52-2900 Washers, R57-5280 Bearings, R62-5510 Bushings, R63-9510 Bushings; 1 ea.: R253-61 Seal &amp; R32127-46 Locknut:</i>					
7	<b>R107-1590</b>	107-1590	Overhaul Kit - Cutting Unit	0	
<i>Tech Note: Includes 2 ea.: R253-96 Seals, R254-72 Bearing Cups, R254-94 Bearings; 1 ea.: R253-61 Seal &amp; R32127-46 Locknut:</i>					
8	<b>R51-0880</b>	51-0880	Bedknife Screw Driver Tool	0	
<b>Other Parts Available</b>					
10	<b>R150481</b>		Brush Assy - Brush Reel	4	
11	<b>R120-2072</b>	100-6426, 108-6487, 112-9200, 120-2072, 93-1375	Hydraulic Gear Motor	1	
<i>Tech Note: Fits Models 3150 &amp; 3250-D:</i>					
11	<b>R105-9770</b>	10-5090, 105-9770, 26-5690, 70-9800, 94-3506, 94-3507	Hydraulic Motor - Reel Quick Release	1	
<i>Tech Note: Fits Models 3000, 3050 &amp; 3100:</i>					
13	<b>R32127-46</b>	32127-46, 3296-60	Locknut	1	

All original equipment manufacturers names and part numbers are used for identification purposes only, and we are in no way implying that our products are original equipment parts. Prices subject to change without notice.



# Replaces Toro Greensmaster 3000 Parts

SPA Cutting Unit - Models 04445, 04448 & 04450  
Reel & Bedknife



Item No	R&R Part No.	OEM Part No.	Description	Qty Req	Order Quantity
14	<b>R302-5</b>	21-6010, 302-11, 302-37, 302-47, 302-5, 302-57, 302-58, 302-6, 31-0300, 32-9660, 60-0800, 62-3880, 92-4181	Fitting - Grease	6	
16	<b>R253-61</b>	253-61	Seal - Oil Reel	1	
17	<b>R10-5060</b>	10-5060	Bracket - Roller Adj	2	
22	<b>R65-8600</b>	10-5040, 65-8600	Knob - Height Adjusting	2	
24	<b>R3296-9</b>	32127-17, 3296-9	Locknut - Comb	12	
29	<b>R10-5010</b>	10-5010	Screw - Roller Adjustment	2	
30	<b>R10-5100</b>	10-5100	Nut - Splined 1-1/8 Long	1	
30	<b>R93-1394</b>	93-1394	Nut - Splined RH Thrd .812 Long	1	
38	<b>R52-2890</b>	52-2890	Bushing - Flanged	4	
39	<b>R52-2900</b>	52-2900	Washer - Nylon	2	
40	<b>R52-2940</b>	52-2940	Handle Assy	1	
41	<b>R52-2920</b>	52-2920	Pivot - Bed Bar	1	
42	<b>R62-5510</b>	52-2870, 62-5510	Bushing	4	
43	<b>R302-18</b>	302-18	Zerk - Grease Press Style	2	
44	<b>R57-4870</b>	57-4870	Handle - Adjusting Fits GM3M	1	

All original equipment manufacturers names and part numbers are used for identification purposes only, and we are in no way implying that our products are original equipment parts. Prices subject to change without notice.



# Replaces Toro Greensmaster 3000 Parts

SPA Cutting Unit - Models 04445, 04448 & 04450  
Reel & Bedknife



Item No	R&R Part No.	OEM Part No.	Description	Qty Req	Order Quantity
44	<b>R77-0330</b>	77-0330	Housing - Pivot Spa	1	
45	<b>R57-5260</b>	107-7409, 57-5260	Pivot - 1/2-20 - Bed Bar	1	
46	<b>R52-3000</b>	52-3000	Arm - Spring	1	
47	<b>R237-77</b>	237-77	O-Ring	2	
48	<b>R57-5280</b>	57-5280	Bearing - Adjusting Handle	2	
49	<b>R57-5290</b>	57-5290	Support - Thrust Bearing Fits 3M	2	
50	<b>R57-5270</b>	57-5270	Spring - Adjusting Handle	1	
51	<b>R3296-62</b>	3296-62	Locknut - 1/2-20 LH Jam	1	
52	<b>R253-84</b>	253-84, 7-0044	Seal - Micro Adj.	1	
54	<b>R257-6</b>	257-6	Bearing - Thrust	2	
55	<b>R63-9510</b>	63-9480, 63-9510	Bushing - Rubber For Bed Bar	2	
56	<b>R52-2910</b>	52-2910	Bolt - Eccentric Bed Bar	1	
57	<b>R52-2930</b>	52-2930	Bolt - Bed Bar	1	
58	<b>R57-4940</b>	52-2780, 57-4940, 57-4940-01	Bed Bar - 13 Hole	1	
59	<b>R52-3060</b>	52-3060, 77-1060, 99-5653	Bracket - RH Rear Roller	1	
60	<b>R52-3090</b>	52-3090, 77-1080, 99-5654	Bracket - LH Rear Roller	1	
61	<b>R3290-125</b>	3290-125	Screw - Set 1/4-20 x 5/16	2	

All original equipment manufacturers names and part numbers are used for identification purposes only, and we are in no way implying that our products are original equipment parts. Prices subject to change without notice.



# Replaces Toro Greensmaster 3000 Parts

SPA Cutting Unit - Models 04445, 04448 & 04450  
Reel & Bedknife



Item No	R&R Part No.	OEM Part No.	Description	Qty Req	Order Quantity
62	<b>R302-40</b>	302-13, 302-40	Fitting - Grease	1	
65	<b>R57-5200</b>	57-5200	Shield - Grass	1	
66	<b>R57-5210</b>	57-5210	Deflector - Styrene	1	
67	<b>R3295-46</b>	3295-46	Tube - Rivet Smi Grass Shield	13	
69	<b>R441674</b>	01-173-0514, 01-173-0516, 3-7253, 3230-5	Screw - 5/16-18 x 1-3/4 Carriage	2	
71	<b>R32153-3</b>	119-4038, 22-12-AJFD, 32127-35, 32146-5, 32153-3, 3296-18, 3296-29, 3296-31, N/A	Locknut - 5/16-18 ESNA Zinc	2	
72	<b>R150425</b>		Bolt - Hex HD 8-32 x 5/8	12	
73	<b>R150426</b>	3256-21	Washer - 8 SAE	12	
74	<b>R36-7260</b>	36-7260	Bar - Cut Off Grass Shield	1	
75	<b>R3256-14</b>	24-7-BD, 32125-2, 3256-14, 3256-51, 51-2170	Washer - 10 Flat	5	
76	<b>R3290-237</b>	3290-237	Screw - Hx Washer HD 10-24	5	

All original equipment manufacturers names and part numbers are used for identification purposes only, and we are in no way implying that our products are original equipment parts. Prices subject to change without notice.



# Replaces Toro Greensmaster 3000 Parts

SPA Cutting Unit - Models 04445, 04448 & 04450  
Reel & Bedknife



Item No	R&R Part No.	OEM Part No.	Description	Qty Req	Order Quantity
77	<b>R3296-39</b>	32127-25, 32128-36, 3290-357, 3296-17, 3296-22, 3296-39, 915663P, 99-7443	Locknut - 3/8-16 Nylon	8	
78	<b>R150485</b>	2410-30, 2410-30OSS	Cap - Protective Bearing Housing	1	
79	<b>R321-4</b>	01-150-1030, 01-178-0406, 20-3-AGD, 321-4, 3222-1	Bolt - Hex HD 1/4-20 x 3/4	4	
80	<b>R3253-3</b>	01-166-0070, 01-166-0410, 23-9-GD, 24-7150, 3253-3, 3256-1, 352-167	Washer - Lock 1/4	4	
81	<b>R12-0460</b>	12-0460	Caplug - End Cap	1	
82	<b>R323-2</b>	01-178-0604, 323-2	Bolt - Hex HD 3/8-16 x 1	1	
83	<b>R10-5080</b>	10-5080, 10-5080-01	End - Cap Reel Brg Housing	1	
84	<b>R10-5120</b>	10-5120	Housing - Bearing Reel	2	
<i>Tech Note: Includes R253-96 &amp; R254-72:</i>					
84	<b>R104-3399</b>	104-3399	Housing Assy - Bearing Reel	2	
85	<b>R354083</b>	104-7729, 354083	Decal - Danger	1	
86	<b>R150477</b>	57-4910	Screw - Bedknife 5/16-18 x 1/2	13	

All original equipment manufacturers names and part numbers are used for identification purposes only, and we are in no way implying that our products are original equipment parts. Prices subject to change without notice.





# Replaces Toro Greensmaster 3000 Parts

SPA Cutting Unit - Models 04445, 04448 & 04450  
Reel & Bedknife



Item No	R&R Part No.	OEM Part No.	Description	Qty Req	Order Quantity
86	<b>R150476</b>	3-3816, 3-6462, 52-4910, 57-4910	Screw - Bedknife 5/16-18 x 5/8	13	
89	<b>R94-2958</b>	94-2958	Stud - Alloy Ball Joint	2	
96	<b>R57-5250</b>	57-5250	Housing - Pivot Spa	1	
96	<b>R52-2980</b>	52-2980	Housing - Pivot Spa	1	
97	<b>R52-2860</b>	119-4150, 52-2860	Washer - Bed Bar Pivot	1	
98	<b>R70-1200</b>	70-1200, 70-1200-01	Frame - Single Point Adj.	1	
99	<b>R3290-316</b>	3290-316, 57-3210	Bolt - Hex Tap 3/8-16 x 1-1/2	4	
99	<b>R323-53</b>	323-53, 57-3210	Bolt - Hex HD 3/8-16 x 1-3/4	4	
100	<b>R3255-9</b>	3255-9	Washer - Lock 3/8 Ext. Star	4	
101	<b>R321-5</b>	321-31, 321-5	Bolt - Hex HD 1/4-20 x 7/8	2	
102	<b>R3256-22</b>	24-9-BD, 3-1032, 3256-1, 3256-22, 93-0954, 93-0989	Washer - Flat 1/4 Yellow	4	
103	<b>R301504</b>	2296-42, 301504, 32127-24, 32128-33, 32146-17, 3296-16, 3296-42, 3296-42 , 915661P	Locknut - ESNA 1/4-20	2	

All original equipment manufacturers names and part numbers are used for identification purposes only, and we are in no way implying that our products are original equipment parts. Prices subject to change without notice.



# Replaces Toro Greensmaster 3000 Parts

SPA Cutting Unit - Models 04445, 04448 & 04450  
Reel & Bedknife



Item No	R&R Part No.	OEM Part No.	Description	Qty Req	Order Quantity
104	<b>R285-14</b>	285-14	Plug - Pipe Frame	2	
105	<b>R3254-6</b>	01-166-0010, 01-166-0280, 01-166-0610, 3253-5, 3254-18, 3254-6, 3290-223, 48-9370	Washer - Lock 3/8	2	
106	<b>R57-9910</b>	57-9910	Bolt - Pivot	2	
107	<b>R400264</b>	01-150-0180, 01-178-0610, 20-48-AD, 20-48-AGD, 32-9160, 3224-3, 323-29, 323-7, 400264, 908035P	Bolt - Hex HD 3/8-16 x 1-1/4	2	

All original equipment manufacturers names and part numbers are used for identification purposes only, and we are in no way implying that our products are original equipment parts. Prices subject to change without notice.



# Replaces Toro Greensmaster 3000 Parts

SPA Cutting Unit - Models 04445, 04448 & 04450  
Reel & Bedknife



Item No	R&R Part No.	OEM Part No.	Description	Qty Req	Order Quantity
108	<b>R453011</b>	01-166-0100, 01-166-0120, 01-166-0270, 01-166-0500, 01-166-0600, 01-166-0620, 132-4593, 2356-3, 237-12, 24-10-AD, 24-11-AD, 24-11-BD, 24-12-AD, 24-12-BD, 30-9310, 32-8190, 3256-24, 3256-3, 3256-36, 3256-4, 453011, 47-9950, 48-9220, 513458, 7-0052	Washer - Flat 3/8 SAE Y/Zinc	4	
109	<b>R52-3100</b>	52-3100	Bolt - Eccentric Shoulder LH	1	
110	<b>R52-3110</b>	52-3110	Bolt - Shoulder HOC RH	1	
111	<b>R443828</b>	01-191-1018, 3214, 3220-6, 443828, 915089P	Nut - 5/8-18 Hex	2	
112	<b>R237-84</b>	237-84	Grommet - Rubber	2	
113	<b>R32108-20</b>	32108-20	Screw - Flat HD Cntrsunk	2	

All original equipment manufacturers names and part numbers are used for identification purposes only, and we are in no way implying that our products are original equipment parts. Prices subject to change without notice.



# Replaces Toro Greensmaster 3000 Parts

SPA Cutting Unit - Models 04445, 04448 & 04450  
Reel & Bedknife



Item No	R&R Part No.	OEM Part No.	Description	Qty Req	Order Quantity
114	<b>R322-5</b>	01-178-0508, 20-26-AD, 20-26-AGD, 30-9000, 322-5, 513341, 519755, 908019P, N/A	Bolt - Hex HD 5/16-18 x 1	2	
115	<b>R3255-8</b>	3255-8	Washer - Lock 5/16 Ext	2	
116	<b>R187-0</b>	3256-25, 7-0032	Washer - Flat 7/16 SAE	1	
117	<b>R52-2990</b>	324-25, 52-2990	Bolt - Spring Retainer	1	
118	<b>R57-5190</b>	32110-19, 57-5190	Screw - Adjusting	2	
119	<b>R443818</b>	01-191-0813, 3218-18, 3218-5, 3248-18	Nut - 1/2-13 Hex Jam Zinc	2	
120	<b>R29-8870</b>	29-8870	Washer - Adj. Handle	1	
121	<b>R52-3010</b>	52-3010	Nut - 1/2-28 LH Jam	2	
122	<b>R254-72</b>	01-103-0050, 01-103-0120, 01-103-0140, 1-543508, 254-71, 254-72, 40439, 62-3340, 99-4511	Cup - Bearing	2	

All original equipment manufacturers names and part numbers are used for identification purposes only, and we are in no way implying that our products are original equipment parts. Prices subject to change without notice.



# Replaces Toro Greensmaster 3000 Parts

SPA Cutting Unit - Models 04445, 04448 & 04450  
Reel & Bedknife



Item No	R&R Part No.	OEM Part No.	Description	Qty Req	Order Quantity
123	<b>R254-94</b>	1-543509, 254-94, 32-8090, 32-8240, 32-9640, 40440, 62-3330	Tapered Bearing Cone	2	
124	<b>R353-585</b>	353-585, 353-587, 354-34, 72-4380, 75-1210, 75-1270, 92-8863, 92-8864	Seal - High Pressure - Reel Motor	1	
125	<b>R253-96</b>	253-96	Seal - Oil Single Lip Reel	2	
126	<b>R114-4683</b>	114-4683	Pin - Hinge 6-1/4 Long	0	

All original equipment manufacturers names and part numbers are used for identification purposes only, and we are in no way implying that our products are original equipment parts. Prices subject to change without notice.