

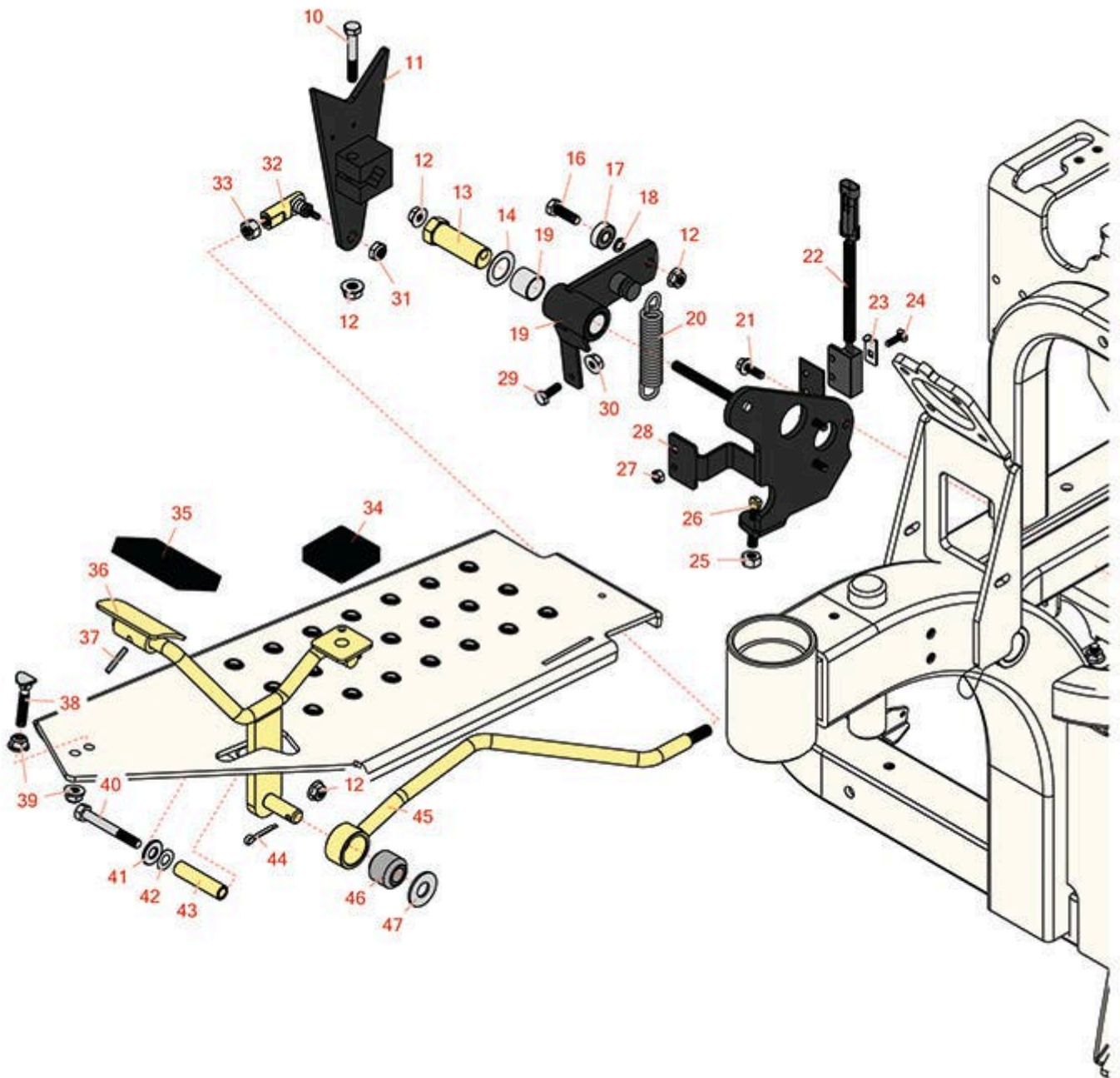


Replaces R&R Products Sand Max 416

Parts

Traction Unit

Pump Control and Traction Pedal



All original equipment manufacturers names and part numbers are used for identification purposes only, and we are in no way implying that our products are original equipment parts. Prices subject to change without notice.



Replaces R&R Products Sand Max 416

Parts

Traction Unit

Pump Control and Traction Pedal



Item No	R&R Part No.	OEM Part No.	Description	Qty Req	Order Quantity
10	R322-10	R20-30-AD, R24-7180, R3223-6, R513347	Bolt - Hex HD 5/16-18 x 2	1	
11	R112-6458-03		Pump Lever Assy	1	
12	R104-8300	R119-4041	Locknut - 5/16-18 Flanged Y/Zinc	4	
13	R76-8640		Stud - Traction	1	
14	R3-6498	R47-8270	Washer - Thrust	1	
16	R322-5	322-5, R01-178-0508, R19H1905, R20-26-AD, R20-26-AGD, R30-9000, R400188, R513341, R519755, R908019P	Bolt - Hex HD 5/16-18 x 1	1	
17	R251-259	R251-307	Bearing - Ball	1	
18	R75-5470		Spacer - Bearing	1	
19	R108-5493		Arm Assy	1	
20	R85-9030		Spring-Extension - Stainless	1	
21	R49-2040	R32104-42, R32104-95, R32144-44	Bolt - Hex Washer 1/4-20 x 3/4	3	
22	R105-0023		Sensor - Proximity	1	
23	R100-4872	R104-7702	Plate-Switch - Neutral	1	
24	R3229-20		Screw - 3/16-24 x 3/4 Carr	1	
25	R444754	R000210	Locknut - 5/16-24 Center	1	

All original equipment manufacturers names and part numbers are used for identification purposes only, and we are in no way implying that our products are original equipment parts. Prices subject to change without notice.



Replaces R&R Products Sand Max 416 Parts

*Traction Unit
Pump Control and Traction Pedal*



Item No	R&R Part No.	OEM Part No.	Description	Qty Req	Order Quantity
26	R18-6380		Pin - Adjustment Steering	1	
27	R3296-2	R32127-10, R9157404	Nut - #10 Lock	1	
28	R108-5490-03		Pump Plate Assy	1	
29	R321-4	400108, R01-150-1030, R01-178-0406, R20-3-AGD, R3222-1, R400108	Bolt - Hex HD 1/4-20 x 3/4	1	
30	R3218-1		Nut-Jam	1	
31	R3296-6	R01-192-0280, R32118-2, R32127-14, R32127-15, R32146-12, R32146-6, R3296-32	Locknut - 3/8-24 ESNA	1	
32	R68-3840		Joint- Ball - RH Thread	1	
33	R3220-3	R01-191-0624, R3290-149	Nut - Jam Ball Joint	1	
34	R74-9110		Rubber Foot Pad - Reverse	1	
35	R74-9100		Rubber Foot Pad - Forward	1	
36	R108-5498-01		Pedal Assy	1	
37	R32121-45	R32121-113, R32121-92	Pin - Spring Roll 5/32 x 1	1	
38	R17-9420	R17-9426, R49-6480	Bolt - Contour Plow Bolt	1	
39	R445722	R30-8980, R32128-2, R32128-20	Nut - Serrated Washer	2	

All original equipment manufacturers names and part numbers are used for identification purposes only, and we are in no way implying that our products are original equipment parts. Prices subject to change without notice.



Replaces R&R Products Sand Max 416 Parts

*Traction Unit
Pump Control and Traction Pedal*



Item No	R&R Part No.	OEM Part No.	Description	Qty Req	Order Quantity
40	R322-14	R01-150-0830, R01-178-0524, R30-8900	Bolt - Hex HD 5/16-18 x 3 GR5	1	
41	R310266	3256-3, R09056, R452004	Washer - Flat 5/16 USS	1	
42	R3290-477	R108473	Washer - Spring Wave	1	
43	R85-8960		Spacer	1	
44	R3272-10	R01-151-0120	Pin - Cotter 1/8 x 3/4	1	
45	R110-8160		Rod Assy	1	
46	R23-2270		Bushing-Rubber	1	
47	R106-9888		Washer-Flat	1	

All original equipment manufacturers names and part numbers are used for identification purposes only, and we are in no way implying that our products are original equipment parts. Prices subject to change without notice.