

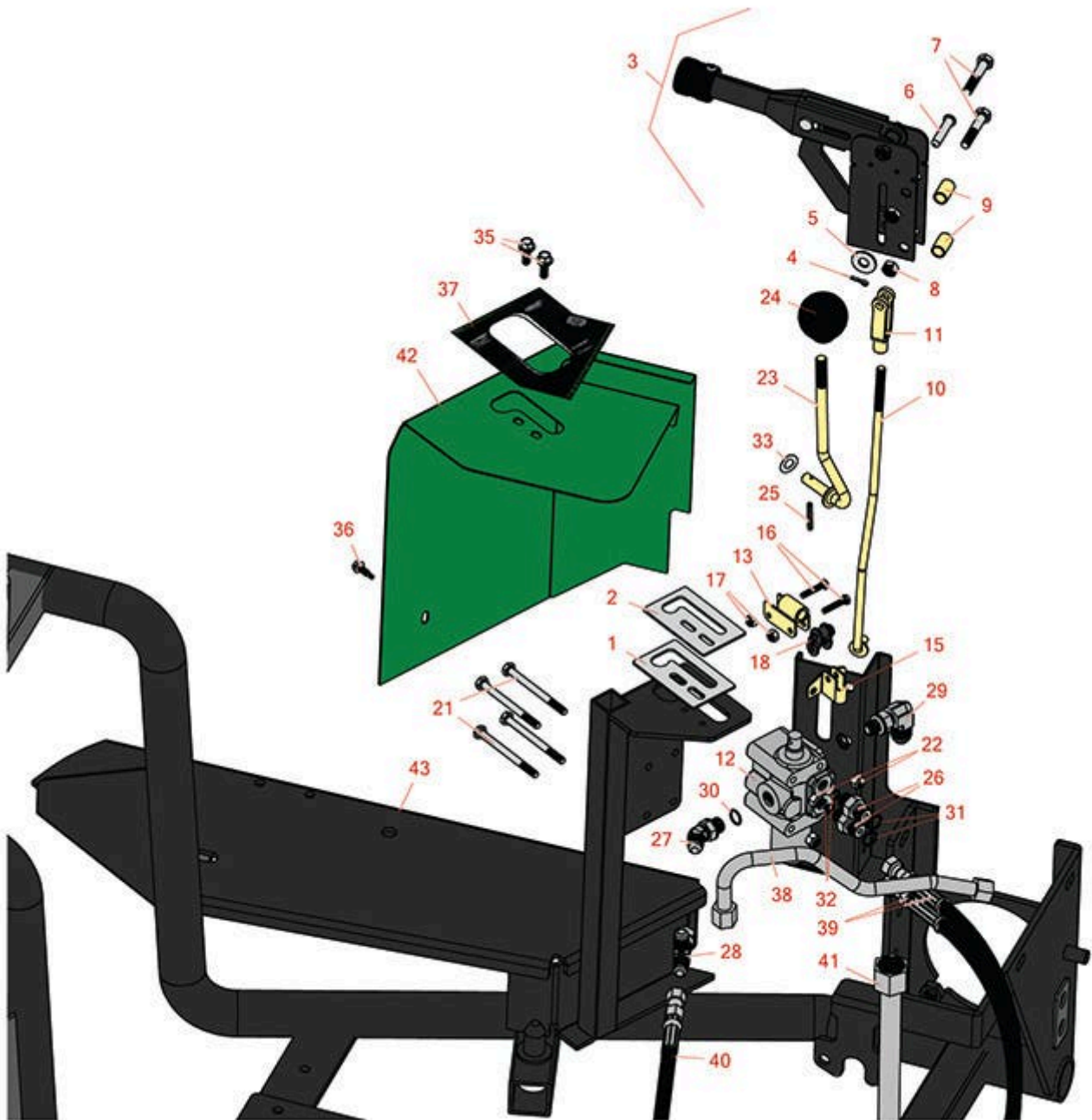
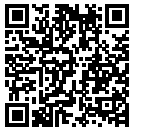


# Replaces R&R Products Sand Max 316

## Parts

Traction Unit

Hand Brake & Hydraulic Valve



All original equipment manufacturers names and part numbers are used for identification purposes only, and we are in no way implying that our products are original equipment parts. Prices subject to change without notice.



# Replaces R&R Products Sand Max 316

## Parts

*Traction Unit*

*Hand Brake & Hydraulic Valve*



Item No	R&R Part No.	OEM Part No.	Description	Qty Req	Order Quantity
1	<b>R21-8640</b>		Latch-Lever, Valve	1	
2	<b>R95-5833</b>		Guide-Lever	1	
3	<b>R95-0636</b>		Lever Assy - Brake	1	
4	<b>R11M7012</b>		Pin - Cotter 1/8 x 5/8	1	
5	<b>R453009</b>	3256-3, R01-166-0400, R24-10-BD, R24-9-AD, R24H1136, R32-9650, R3256-2, R3256-23, R3256-67, R3290-217, R3556-3, R4-2390, R452006, R7-0152	Washer - Flat 5/16 SAE	1	
6	<b>R283-14</b>		Pin - Clevis	1	
7	<b>R101344</b>	R322-8, R400194	Bolt - Hex HD 5/16-18 x 1-3/4	2	
8	<b>R3296-29</b>	3296-29, R1-804256, R915662P	Locknut - 5/16-18 ESNA	2	
9	<b>R85-0290</b>		Spacer	2	
10	<b>R95-0628</b>		Rod-Brake	1	
11	<b>R282-2</b>	R1-303105	Yoke	1	
12	<b>R43-1710</b>	R21-8550, R43-1710-01, R43-1730	Valve Assy	1	
13	<b>R92-8983</b>		Pivot	1	

All original equipment manufacturers names and part numbers are used for identification purposes only, and we are in no way implying that our products are original equipment parts. Prices subject to change without notice.



# Replaces R&R Products Sand Max 316 Parts

*Traction Unit  
Hand Brake & Hydraulic Valve*



Item No	R&R Part No.	OEM Part No.	Description	Qty Req	Order Quantity
15	<b>R88-8480</b>	R85-8920	Bracket-Pivot	1	
16	<b>R3290-360</b>		Bolt	2	
17	<b>R3296-2</b>	R32127-10, R9157404	Nut - #10 Lock	2	
18	<b>R2710-20</b>		Link - Offset	1	
21	<b>R321-23</b>		Bolt - Hx HD 1/4-20 x 3	4	
22	<b>R301504</b>	R32127-24, R32146-17, R3296-16, R3296-42, R915661P, RM40333	Locknut - ESNA 1/4-20	4	
23	<b>R92-8981</b>	R92-8981-01	Lift Lever	1	
24	<b>R233-21</b>		Knob	1	
25	<b>R32121-73</b>	R29-56-D, R32121-7, R95462	Pin - Roll	1	
26	<b>R340-92</b>		Hydraulic Fitting - Striaight	2	
27	<b>R353-212</b>	R30-6430, R353-378	Hydraulic Fitting - 45 Deg	1	
28	<b>R353-877</b>		Hydraulic Fitting - Tee 6MJ-6FJX-6MJ	1	
29	<b>R353-511</b>		Hydraulic Fitting - 90 Deg	1	
30	<b>R237-42</b>	R31-4160, R339897	O-Ring	2	
31	<b>R237-22</b>	R107-8844, R232-72, R237-78	O-Ring	2	
32	<b>R237-21</b>		O-Ring	2	

All original equipment manufacturers names and part numbers are used for identification purposes only, and we are in no way implying that our products are original equipment parts. Prices subject to change without notice.



# Replaces R&R Products Sand Max 316 Parts

*Traction Unit  
Hand Brake & Hydraulic Valve*



Item No	R&R Part No.	OEM Part No.	Description	Qty Req	Order Quantity
33	<b>R3290-477</b>	R108473	Washer - Spring Wave	1	
35	<b>R3234-33</b>		Bolt - 1/4-20 x 3/4 Serr Hex Flanged	2	
36	<b>R32104-76</b>	R32104-63, R32104-65, R32104-74	Bolt - Hx HD #12 x 3/4 S.D.Imp	1	
37	<b>R95-0647</b>		Decal-Control	1	
38	<b>R95-0575</b>		Tube-Valve, Shuttle	1	
39	<b>R75-6200</b>		Hydraulic Hose Assy	2	
40	<b>R95-0592</b>		Hydraulic Hose Assy	1	
41	<b>R95-0643</b>		Tube-Valve to Cool	1	
42	<b>R95-0601G</b>		Valve Shroud Assy - Green	1	
43	<b>R95-0600B</b>		Frame - Black	1	

All original equipment manufacturers names and part numbers are used for identification purposes only, and we are in no way implying that our products are original equipment parts. Prices subject to change without notice.