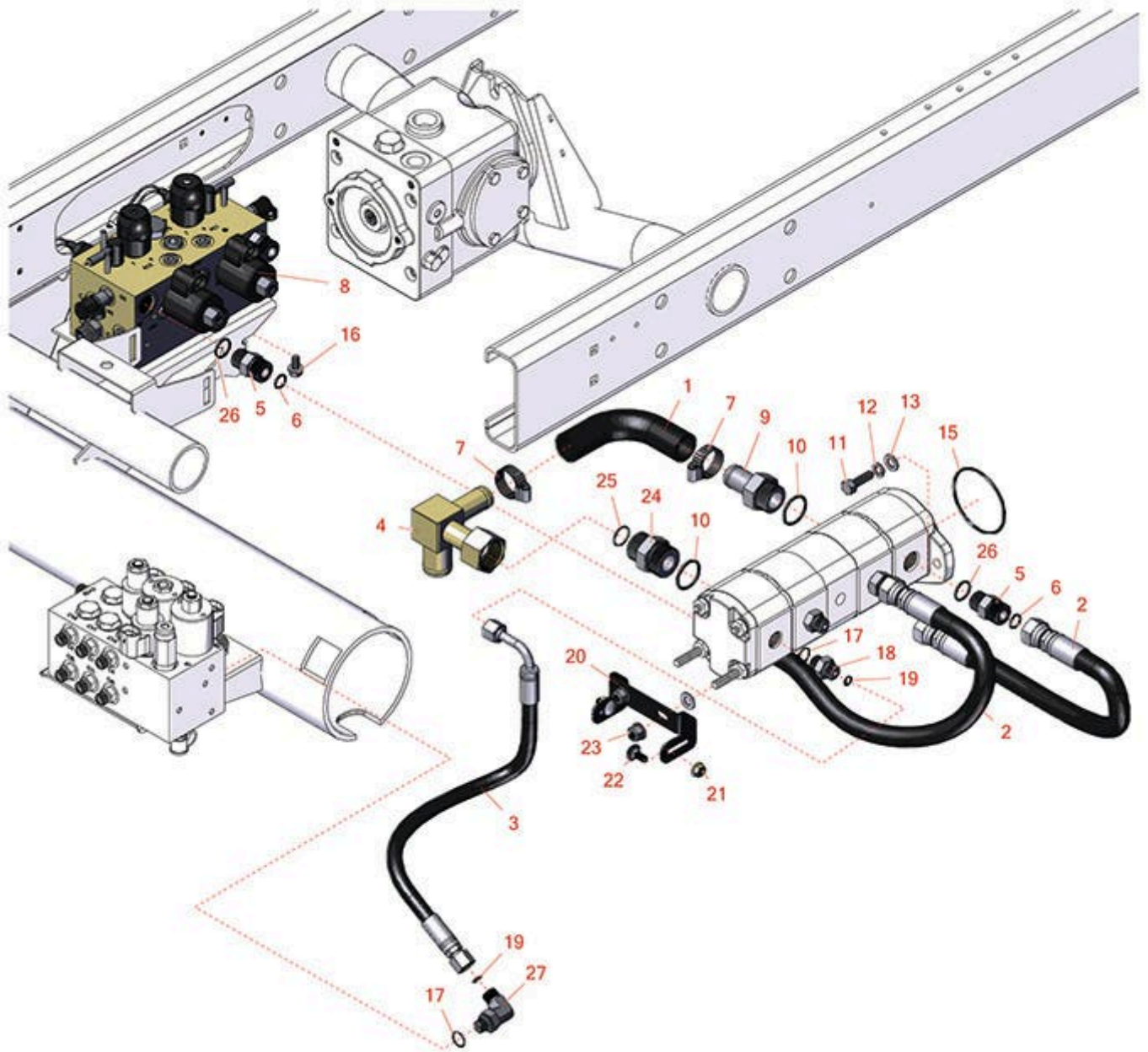
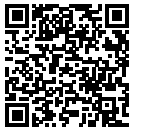




Replaces R&R Products Reel Max 744LP

Parts

Traction Unit
Gear Pump



All original equipment manufacturers names and part numbers are used for identification purposes only, and we are in no way implying that our products are original equipment parts. Prices subject to change without notice.



Replaces R&R Products Reel Max 744LP

Parts

Traction Unit

Gear Pump



Item No	R&R Part No.	OEM Part No.	Description	Qty Req	Order Quantity
Hoses					
1	R108-1683		Hose - Formed	1	
2	R108-1686		Hydraulic Hose Assy	2	
3	R107-1135		Hydraulic Hose Assy	2	
Other Parts Available					
4	R108-1672		Manifold-Tube	1	
5	R340-7		Adapter	4	
6	R237-65		O-Ring	5	
7	R2412-36	R2210-87, R31-9140, R93-5818, R99-0772	Clamp - Hose 1/2	2	
8	R108-1625		Manifold Assy - Reels	1	
9	R354-78		Connector-Hose	1	
10	R237-146	R340-146	O-Ring	2	
11	R3274-1		Bolt - 3/8-16 x 1 1/4 Soc HD Cap	2	
12	R3254-6	446142, R01-166-0010, R01-166-0280, R01-166-0610, R12H304, R3253-5, R3254-18, R3290-223, R446140, R446142, R48-9370	Washer - Lock 3/8	2	

All original equipment manufacturers names and part numbers are used for identification purposes only, and we are in no way implying that our products are original equipment parts. Prices subject to change without notice.



Replaces R&R Products Reel Max 744LP

Parts

*Traction Unit
Gear Pump*



Item No	R&R Part No.	OEM Part No.	Description	Qty Req	Order Quantity
13	R453011	3256-24, 453011, R01-166-0100, R01-166-0120, R01-166-0270, R01-166-0500, R01-166-0600, R01-166-0620, R132-4593, R237-12, R24-10-AD, R24-11-AD, R24-11-BD, R24-12-AD, R24-12-BD, R30-9310, R32-8190, R3256-24, R3256-3, R3256-36, R3256-4, R47-9950	Washer - Flat 3/8 SAE Y/Zinc	4	
15	R237-161		O-Ring	1	
16	R3234-14	R3234-23	Bolt - Hex Serrated Washer HD	3	
17	R237-79		O-Ring	2	
18	R340-3		Hydraulic Fitting - Adapter Connector	2	
19	R237-22	R107-8844, R232-72, R237-78	O-Ring	3	
20	R108-1801-01		Bracket-Support - Pump	1	
21	R104-8300	R119-4041	Locknut - 5/16-18 Flanged Y/Zinc	2	
22	R3230-1	R01-173-0506, R3230-20, R900037P	Bolt - Carriage 5/16-18 x 3/4	2	
23	R103-9511		Nut - Lock	2	

All original equipment manufacturers names and part numbers are used for identification purposes only, and we are in no way implying that our products are original equipment parts. Prices subject to change without notice.

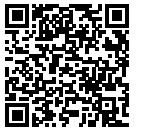


Replaces R&R Products Reel Max 744LP

Parts

Traction Unit

Gear Pump



Item No	R&R Part No.	OEM Part No.	Description	Qty Req	Order Quantity
24	R104-3797		Hydraulic Fitting - Striaight	1	
25	R340-65	R6815-002	O-Ring	1	
26	R237-80	R327-80	O-Ring	4	
27	R340-18		Hydraulic Fitting	1	

All original equipment manufacturers names and part numbers are used for identification purposes only, and we are in no way implying that our products are original equipment parts. Prices subject to change without notice.