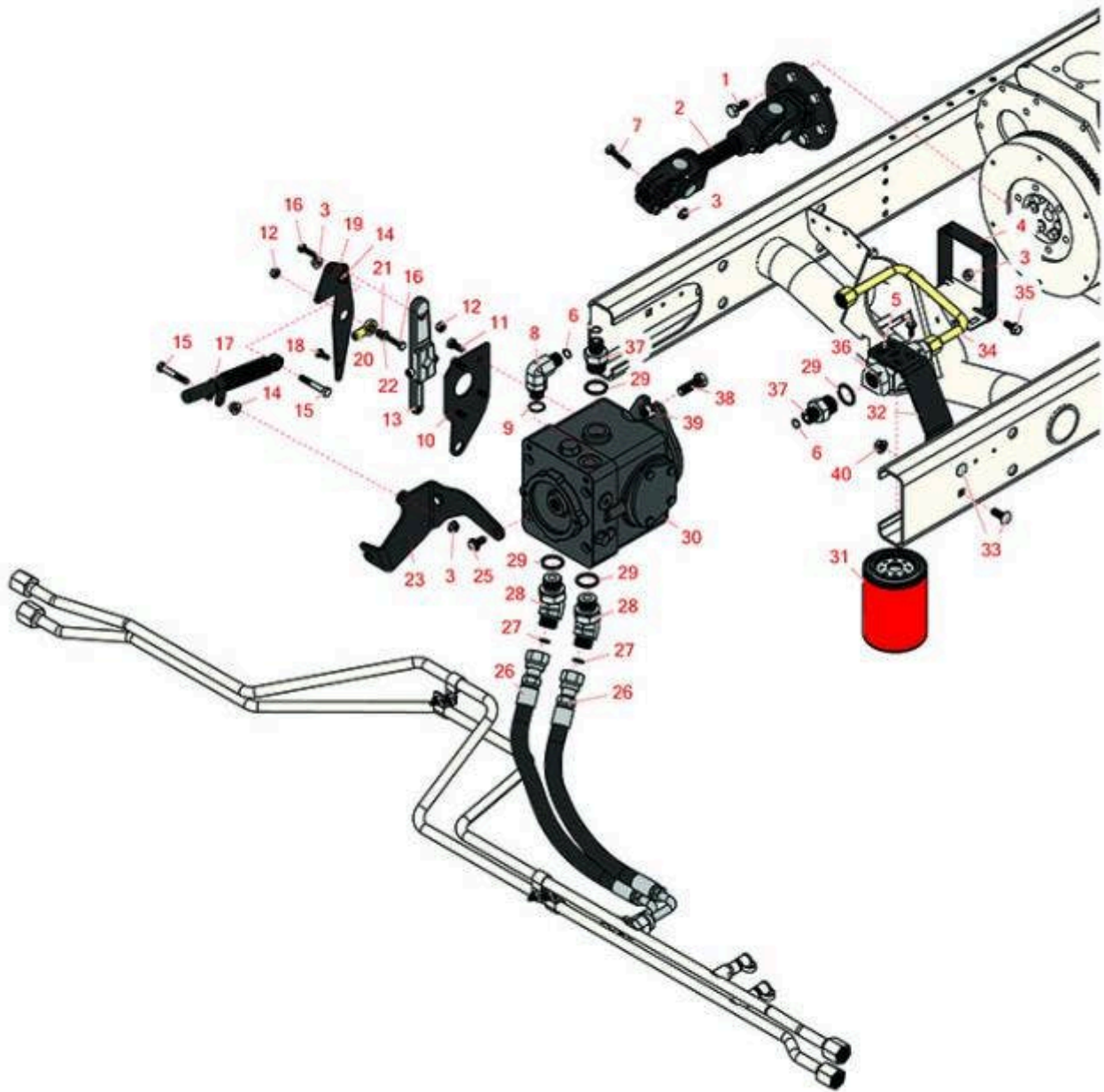




Replaces R&R Products Reel Max 744LP

Parts

*Traction Unit
Driveshaft and V Pump*



All original equipment manufacturers names and part numbers are used for identification purposes only, and we are in no way implying that our products are original equipment parts. Prices subject to change without notice.



Replaces R&R Products Reel Max 744LP

Parts

Traction Unit

Driveshaft and V Pump



Item No	R&R Part No.	OEM Part No.	Description	Qty Req	Order Quantity
1	R43-0090		Bolt - 10mm x 1.25 x 25 Hex HD	6	
2	R108-1641		Driveshaft Assy	1	
3	R104-8300	R119-4041	Locknut - 5/16-18 Flanged Y/Zinc	6	
4	R108-1799-03		Hoop-Guard	1	
5	R3234-33		Bolt - 1/4-20 x 3/4 Serr Hex Flanged	2	
6	R237-30	R23-6320	O-Ring - Seal	4	
7	R322-7	R01-150-0750, R01-150-0760, R01-178-0512, R20-28-AD, R20-28-AGD, R3223-4	Bolt - Hex HD 5/16-18 x 1-1/2	2	
8	R340-105		Hydraulic Fitting	1	
9	R237-80	R327-80	O-Ring	1	
10	R150881		Plate - Variable Pump	1	
11	R112-0150		Bolt - Hex HD M8-1.25 x 20	4	
12	R301504	R32127-24, R32146-17, R3296-16, R3296-42, R915661P, RM40333	Locknut - ESNA 1/4-20	2	
13	R112-0156		Arm - Control	1	
14	R445722	R30-8980, R32128-2, R32128-20	Nut - Serrated Washer	2	

All original equipment manufacturers names and part numbers are used for identification purposes only, and we are in no way implying that our products are original equipment parts. Prices subject to change without notice.



Replaces R&R Products Reel Max 744LP

Parts

Traction Unit

Driveshaft and V Pump



Item No	R&R Part No.	OEM Part No.	Description	Qty Req	Order Quantity
15	R322-10	R20-30-AD, R24-7180, R3223-6, R513347	Bolt - Hex HD 5/16-18 x 2	2	
16	RP1471-1	R01-150-1400, R20-5-AD, R3-8297, R30-8880, R321-6, R3222-2, R513320	Bolt - Hex HD 1/4-20 x 1	2	
17	R76-8870	R105-7280	Lever Damper Assy	1	
18	R400106	R321-3, R513315, R908002P	Bolt - Hex HD 1/4-20 x 5/8	1	
19	R150880		Bracket - Traction Lever	1	
20	R2411-41		Rod End - Ball Joint	1	
21	R43-5930	R01-176-0030	Washer - Lock M6	1	
22	R3256-22	R09061, R24-9-BD, R3-1032, R93-0954, R93-0989	Washer - Flat 1/4 Yellow	1	
23	R110-5323-03		Bracket	1	
25	R3234-1		Bolt - Flanged Serrated Hex HD 3/8-16 x 3/4	2	
26	R108-1679		Hydraulic Hose Assy	2	
27	R237-65		O-Ring	2	
28	R340-156		Hydraulic Fitting	2	
29	R237-81		O-Ring	5	
30	R107-4470		Variable Pump Assy	1	

All original equipment manufacturers names and part numbers are used for identification purposes only, and we are in no way implying that our products are original equipment parts. Prices subject to change without notice.



Replaces R&R Products Reel Max 744LP

Parts

Traction Unit

Driveshaft and V Pump



Item No	R&R Part No.	OEM Part No.	Description	Qty Req	Order Quantity
31	R86-3010	R12-5270, R23-9740, R28-1370, R353-387, R522972, R54-0110, R549597, R76-6490, RZS48758	Baldwin Hydraulic Oil Filter	1	
31	RRF10610	R23-9740	SilverGuard Oil Filter	1	
32	R110-0906B		Support -Oi Filter	1	
33	R3231-2	R01-157-0170, R01-173-0608, R900063P	Bolt - Carriage 3/8-16 x 1	2	
34	R108-1714		Tube Assy	1	
35	R3234-5	R62-3310	Bolt - 5/16-18x3/4 Hx Ser Was HD	2	
36	R150924		Filter Head Assy	1	
37	R100-4240		No 8 Orfs Male x No 12 Orb Male	3	
38	R3234-32	R3434-32	Bolt - 1/2-13 x 1 1/4 Hex Flange Bolt	2	
39	R32128-49		Nut - 1/2-13 Hex Flange	2	
40	R104-8301	R109-6658, R133-7570	Locknut - 3/8-16 Nylon Flanged	2	

All original equipment manufacturers names and part numbers are used for identification purposes only, and we are in no way implying that our products are original equipment parts. Prices subject to change without notice.