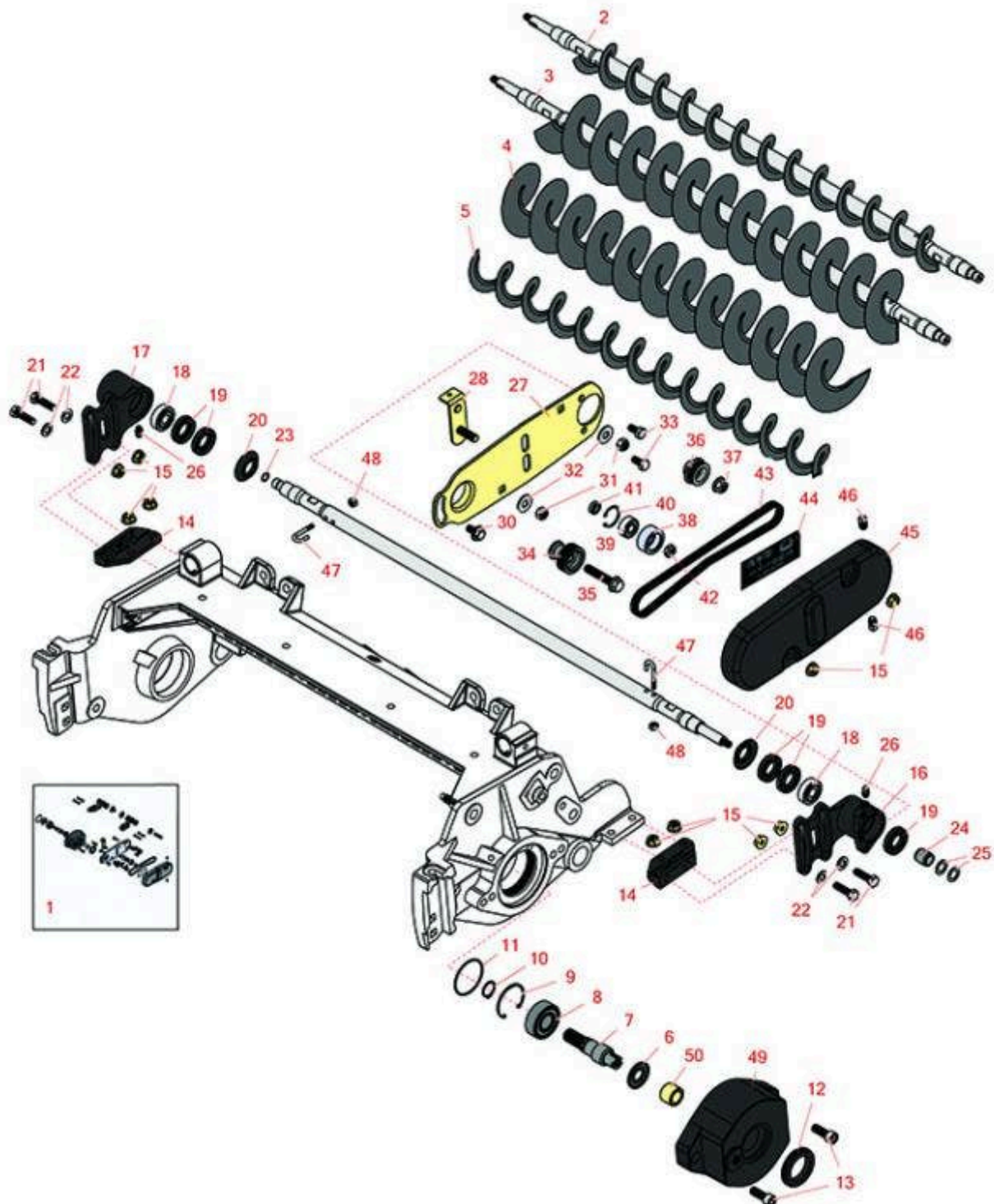




Replaces R&R Products Reel Max 744D

Parts

Cutting Unit
Rear Brush



All original equipment manufacturers names and part numbers are used for identification purposes only, and we are in no way implying that our products are original equipment parts. Prices subject to change without notice.



Replaces R&R Products Reel Max 744D

Parts

Cutting Unit
Rear Brush



Item No	R&R Part No.	OEM Part No.	Description	Qty Req	Order Quantity
---------	--------------	--------------	-------------	---------	----------------

Complete Roller Brush Kits

1	R150907		Brush Kit - Rear Roller - Less Brush	1	
---	---------	--	--------------------------------------	---	--

Other Parts Available

2	R150915	R108-4190	Shaft Assy - Rear Roller Brush - 2 in Keyed	1	
3	R150916		Shaft Assy - Rear Roller Brush 3.5 in - Keyed	1	
4	R110-1740		Brush-Roller (High HOC) 3.5 in OD	1	
5	R108-4193		Brush - Roller - 2 OD	1	
6	R107-7795		Seal - Oil	1	
7	R108-4234		Shaft - Drive	1	
8	R93-2559	R204-060, RTCU23201	Bearing	1	
9	R32120-62	32120-62	Ring - Retaining	1	
10	R458013	R30-0580, R32120-72, R93-2525, R936125	Ring - Retaining	1	
11	R112-6967		O-Ring	1	
12	R240-7		Grommet - Rubber - 2 in OD	1	
13	R3274-7		Bolt - Soc HD Cap 3/8-16 x 1	2	
14	R108-4480		Bracket - Rear Roller Brush	2	
15	R104-8300	R119-4041	Locknut - 5/16-18 Flanged Y/Zinc	10	
16	R108-4495		Bearing Housing Assy - Driven	1	
17	R108-4496		Bearing Housing Assy - Non Driven	1	
18	R95-0707		Bearing - Self Aligning	2	

All original equipment manufacturers names and part numbers are used for identification purposes only, and we are in no way implying that our products are original equipment parts. Prices subject to change without notice.



Replaces R&R Products Reel Max 744D

Parts

*Cutting Unit
Rear Brush*



Item No	R&R Part No.	OEM Part No.	Description	Qty Req	Order Quantity
19	R106-8530		Seal - Oil	5	
20	R108-4172		Seal - Excluder	2	
21	R322-16	R4-4200	Bolt - Hex HD 5/16-18 x 1-1/8	4	
22	R94-6936		Washer - Hardened - 5/16 SAE	4	
23	R237-22	R107-8844, R232-72, R237-78	O-Ring	1	
24	R108-4491		Spacer - Hardened	1	
25	R112-6957		Washer - Hardened	2	
26	R302-5	R173-0, R21-6010, R255825, R302-37, R302-47, R302-57, R302-58, R302-6, R31-0300, R32-9660, R471214, R471223, R471226, R60-0800, R62-3880, R92-4181, RJD7797, RJD7842, RJD7844, RM0004, RZS48114-04	Fitting - Grease	2	
27	R108-4205		Plate Assy - Rear Roller Brush	1	
28	R108-4478		Plate - Idler	1	
30	R27-0411		Bolt - Shoulder	1	
31	R3296-47		Locknut - 5/16-18 Jam Nyloc	2	

All original equipment manufacturers names and part numbers are used for identification purposes only, and we are in no way implying that our products are original equipment parts. Prices subject to change without notice.



Replaces R&R Products Reel Max 744D

Parts

Cutting Unit
Rear Brush



Item No	R&R Part No.	OEM Part No.	Description	Qty Req	Order Quantity
32	R453009	3256-3, R01-166-0400, R24-10-BD, R24-9-AD, R24H1136, R32-9650, R3256-2, R3256-23, R3256-67, R3290-217, R3556-3, R4-2390, R452006, R7-0152	Washer - Flat 5/16 SAE	2	
33	R322-2	R513338P	Bolt - Hex HD 5/16-18 x 5/8	2	
34	R110-1742		Pulley - Driver	1	
35	R66-9302	R3234-20	Screw - HHF, Whiz	1	
36	R110-1743		Pulley - Driven - Keyed	1	
37	R104-8301	R109-6658, R133-7570	Locknut - 3/8-16 Nylon Flanged	1	
38	R110-1745		Bearing Assy - Idler	1	
39	R110-1701		Bearing	1	
40	R32151-60		Ring - Snap	1	
41	R93-3658		Spacer - Hardened	1	
42	R3296-59		Locknut - 3/8-16 Nylon Jam	1	
43	R110-1747		Belt - Rear Brush - 7 in	1	
44	R110-1734		Decal-Belt Tension	1	
45	R112-6952		Cover - Belt	1	
46	R285-17	R285-10	Plug - 1/8 NPT	2	

All original equipment manufacturers names and part numbers are used for identification purposes only, and we are in no way implying that our products are original equipment parts. Prices subject to change without notice.



Replaces R&R Products Reel Max 744D Parts

*Cutting Unit
Rear Brush*



Item No	R&R Part No.	OEM Part No.	Description	Qty Req	Order Quantity
47	R105-9632		Bolt - J	2	
48	R3296-2	R32127-10, R9157404	Nut - #10 Lock	2	
49	R108-4201		Bearing Housing Assy	1	
50	R108-4477		Spacer	1	

All original equipment manufacturers names and part numbers are used for identification purposes only, and we are in no way implying that our products are original equipment parts. Prices subject to change without notice.