

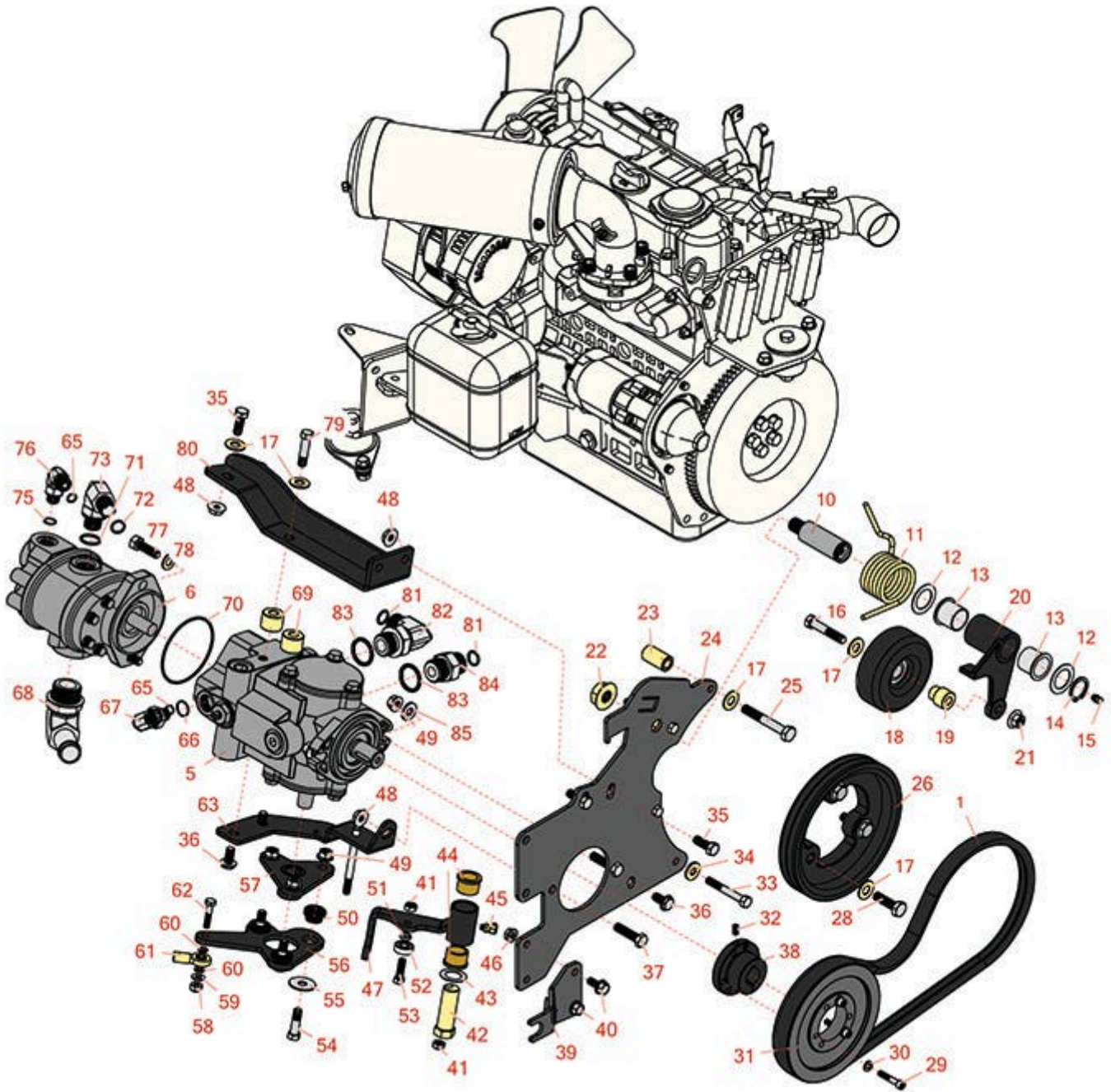


# Replaces R&R Products Reel Max 331LP

## Parts

*Traction Unit*

*Hydrostat Neutral Arm*



All original equipment manufacturers names and part numbers are used for identification purposes only, and we are in no way implying that our products are original equipment parts. Prices subject to change without notice.



# Replaces R&R Products Reel Max 331LP

## Parts

*Traction Unit*

*Hydrostat Neutral Arm*



| Item No                      | R&R Part No.     | OEM Part No.   | Description           | Qty Req | Order Quantity |
|------------------------------|------------------|--|-----------------------|---------|----------------|
| <b>Belts</b>                 |                  |  |                       |         |                |
| 1                            | <b>R150512</b>   | R95-8730   | Belt - Hydrastat      | 1       |                |
| <b>Gauges and Controls</b>   |                  |  |                       |         |                |
| 5                            | <b>R104-4890</b> | R104-4832  | Pump - Piston         | 1       |                |
| 6                            | <b>R95-8601</b>  |  | Pump - Gear           | 1       |                |
| <b>Other Parts Available</b> |                  |  |                       |         |                |
| 10                           | <b>R99-3529</b>  |  | Shaft - Pivot - Idler | 1       |                |
| 11                           | <b>R95-8917</b>  |  | Spring - Torsion      | 1       |                |
| 12                           | <b>R74-1810</b>  |  | Washer                | 2       |                |
| 13                           | <b>R99-3631</b>  |  | Bushing - Flanged     | 2       |                |
| 14                           | <b>R458039</b>   | R32151-36  | Ring - Retaining      | 1       |                |
| 15                           | <b>R302-5</b>    | R173-0,<br>R21-6010,<br>R255825,<br>R302-37,<br>R302-47,<br>R302-57,<br>R302-58,<br>R302-6,<br>R31-0300,<br>R32-9660,<br>R471214,<br>R471223,<br>R471226,<br>R60-0800,<br>R62-3880,<br>R92-4181,<br>RJD7797,<br>RJD7842,<br>RJD7844,<br>RM0004 | Fitting - Grease      | 1       |                |

All original equipment manufacturers names and part numbers are used for identification purposes only, and we are in no way implying that our products are original equipment parts. Prices subject to change without notice.



# Replaces R&R Products Reel Max 331LP

## Parts

*Traction Unit*

*Hydrostat Neutral Arm*



| Item No | R&R Part No.       | OEM Part No.  | Description                            | Qty Req | Order Quantity |
|---------|--------------------|---|--|---------|----------------|
| 16      | <b>R323-10</b>     | R01-150-0680,<br>R01-178-0616,<br>R100-6663,<br>R100-8320,<br>R1489,<br>R20-51-AD,<br>R20-51-AGD,<br>R3224-6,<br>R323-35,<br>R908336,<br>REP-300-ZB | Bolt - Hex HD 3/8-16 x 2               | 1       |                |
| 17      | <b>R80-6990</b>    |   | Washer - Hardened                      | 9       |                |
| 18      | <b>R95-8802</b>    |   | Pulley- Idler                          | 1       |                |
| 19      | <b>R95-8806</b>    |   | Spacer                                 | 1       |                |
| 20      | <b>R99-3623-03</b> |   | Arm - Idler                            | 1       |                |
| 21      | <b>R32128-21</b>   | 32128-21  | Locknut - Flanged 3/8-16 Whiz Top Lock | 1       |                |
| 22      | <b>R104-8300</b>   | R119-4041   | Locknut - 5/16-18 Flanged Y/Zinc       | 1       |                |
| 23      | <b>R95-8736</b>    |   | Spacer                                 | 1       |                |
| 24      | <b>R95-8933-03</b> | R95-8933  | Plate - Mount - Pump                   | 1       |                |
| 25      | <b>R42-9370</b>    |   | Bolt - Hex HD 10mm x 70mm              | 1       |                |
| 26      | <b>R99-3412-03</b> | R99-3412  | Pulley                                 | 1       |                |
| 28      | <b>R56-2140</b>    |   | Bolt                                   | 3       |                |
| 29      | <b>R316797</b>     | R321-13   | Bolt - 1/4-20 x 1-1/4                  | 3       |                |
| 30      | <b>R3253-3</b>     | 446130,<br>R01-166-0070,<br>R01-166-0410,<br>R23-9-GD,<br>R24-7150,<br>R352-167,<br>R446128,<br>R446130   | Washer - Lock 1/4                      | 3       |                |

All original equipment manufacturers names and part numbers are used for identification purposes only, and we are in no way implying that our products are original equipment parts. Prices subject to change without notice.



# Replaces R&R Products Reel Max 331LP

## Parts

*Traction Unit*

*Hydrostat Neutral Arm*



| Item No | R&R Part No.        | OEM Part No.   | Description                                 | Qty Req | Order Quantity |
|---------|---------------------|--|---|---------|----------------|
| 31      | <b>R93-6841</b>     |  | Pulley                                      | 1       |                |
| 32      | <b>R3245-36</b>     |  | Screw - Set - Hx Soc HD                     | 1       |                |
| 33      | <b>R151379</b>      | R33114-060,<br>R42-9510  | Bolt - Hx HD 8-1.25 x 65mm                  | 1       |                |
| 34      | <b>R87-8640</b>     | R87-7510   | Washer - Flat                               | 1       |                |
| 35      | <b>R3234-11</b>     |  | Bolt - Hex Washer HD                        | 4       |                |
| 36      | <b>R3234-1</b>      |  | Bolt - Flanged Serrated Hex HD 3/8-16 x 3/4 | 3       |                |
| 37      | <b>R400264</b>      | 323-7,<br>R01-150-0180,<br>R01-178-0610,<br>R19H1732,<br>R20-48-AD,<br>R20-48-AGD,<br>R32-9160,<br>R3224-3,<br>R323-29,<br>R323-7,<br>R400264,<br>R908035P | Bolt - Hex HD 3/8-16 x 1-1/4                | 2       |                |
| 38      | <b>R93-6842</b>     |  | Bushing - Taper Lock 7/8                    | 1       |                |
| 39      | <b>R104-0464-03</b> | R99-3553,<br>R99-3553-03   | Bracket - Support                           | 1       |                |
| 40      | <b>R3234-5</b>      | R62-3310   | Bolt - 5/16-18x3/4 Hx Ser Was HD            | 2       |                |
| 41      | <b>R3296-29</b>     | 3296-29,<br>R1-804256,<br>R915662P   | Locknut - 5/16-18 ESNA                      | 2       |                |
| 42      | <b>R76-8640</b>     |  | Stud - Traction                             | 1       |                |
| 43      | <b>R3-6498</b>      | R47-8270   | Washer - Thrust                             | 1       |                |
| 44      | <b>R256-113</b>     |  | Bushing - 3/4 ID x 1 1/8 Flange             | 2       |                |
| 45      | <b>R302-60</b>      |  | Zerk - Grease 90 Deg.                       | 1       |                |

All original equipment manufacturers names and part numbers are used for identification purposes only, and we are in no way implying that our products are original equipment parts. Prices subject to change without notice.



# Replaces R&R Products Reel Max 331LP

## Parts

*Traction Unit*

*Hydrostat Neutral Arm*



| Item No | R&R Part No.       | OEM Part No.  | Description                            | Qty Req | Order Quantity |
|---------|--------------------|---|--|---------|----------------|
| 46      | <b>R32128-44</b>   |   | Nut                                    | 2       |                |
| 47      | <b>R104-0422</b>   |   | Neutral Arm Assy                       | 1       |                |
| 48      | <b>R32128-43</b>   | R30-8990,<br>R3290-357  | Nut - Flanged Whiz - 3/8-16            | 5       |                |
| 49      | <b>R3296-39</b>    | 3296-39,<br>R32127-25,<br>R32128-36,<br>R3296-17,<br>R3296-22,<br>R915663P,<br>R99-7443 | Locknut - 3/8-16 Nylon                 | 5       |                |
| 50      | <b>R63-9750</b>    | R64-9750  | Mount - Rubber                         | 3       |                |
| 51      | <b>R100-4817</b>   |   | Spacer - Bearing                       | 1       |                |
| 52      | <b>R251-259</b>    | R251-307  | Bearing - Ball                         | 1       |                |
| 53      | <b>R3274-104</b>   |   | Bolt - Hx Soc Button HD                | 1       |                |
| 54      | <b>R150776</b>     | R95-3857  | Bolt - Button HD Soc CS 3/8-16 x 1-1/2 | 3       |                |
| 55      | <b>R2844</b>       |   | Washer                                 | 3       |                |
| 56      | <b>R99-3594-03</b> |   | Lever - Pump                           | 1       |                |
| 57      | <b>R99-3598-03</b> | R120-5566   | Hub Assy                               | 1       |                |
| 58      | <b>R301504</b>     | R32127-24,<br>R32146-17,<br>R3296-16,<br>R3296-42,<br>R915661P,<br>RM40333              | Locknut - ESNA 1/4-20                  | 1       |                |
| 59      | <b>R3256-22</b>    | R09061,<br>R24-9-BD,<br>R3-1032,<br>R93-0954,<br>R93-0989                               | Washer - Flat 1/4 Yellow               | 1       |                |

All original equipment manufacturers names and part numbers are used for identification purposes only, and we are in no way implying that our products are original equipment parts. Prices subject to change without notice.



# Replaces R&R Products Reel Max 331LP

## Parts

*Traction Unit*

*Hydrostat Neutral Arm*



| Item No | R&R Part No.       | OEM Part No.                      | Description                      | Qty Req | Order Quantity |
|---------|--------------------|-----------------------------------|----------------------------------|---------|----------------|
| 60      | <b>R43-5930</b>    | R01-176-0030                      | Washer - Lock M6                 | 2       |                |
| 61      | <b>R2411-41</b>    |                                   | Rod End - Ball Joint             | 1       |                |
| 62      | <b>R400112</b>     | R400114                           | Bolt - Hex HD 1/4-20 x 1-1/4     | 1       |                |
| 63      | <b>R95-8960-03</b> | R95-8960                          | Bracket- Neutral                 | 1       |                |
| 65      | <b>R237-22</b>     | R107-8844,<br>R232-72,<br>R237-78 | O-Ring                           | 2       |                |
| 66      | <b>R237-79</b>     |                                   | O-Ring                           | 1       |                |
| 67      | <b>R340-18</b>     |                                   | Hydraulic Fitting                | 1       |                |
| 68      | <b>R56-9530</b>    |                                   | Hydraulic Fitting - 90 Deg       | 1       |                |
| 69      | <b>R99-3440</b>    |                                   | Spacer                           | 2       |                |
| 70      | <b>R353-949</b>    | R60-3520                          | O-Ring                           | 1       |                |
| 71      | <b>R237-80</b>     | R327-80                           | O-Ring                           | 1       |                |
| 72      | <b>R237-30</b>     | R23-6320                          | O-Ring - Seal                    | 1       |                |
| 73      | <b>R340-105</b>    |                                   | Hydraulic Fitting                | 1       |                |
| 75      | <b>R237-42</b>     | R31-4160,<br>R339897              | O-Ring                           | 1       |                |
| 76      | <b>R340-77</b>     | R340-100,<br>R95-7889             | Hydraulic Fitting                | 1       |                |
| 77      | <b>R3274-1</b>     |                                   | Bolt - 3/8-16 x 1 1/4 Soc HD Cap | 2       |                |

All original equipment manufacturers names and part numbers are used for identification purposes only, and we are in no way implying that our products are original equipment parts. Prices subject to change without notice.



# Replaces R&R Products Reel Max 331LP

## Parts

*Traction Unit*

*Hydrostat Neutral Arm*



| Item No | R&R Part No.     | OEM Part No.  | Description                  | Qty Req | Order Quantity |
|---------|------------------|---|------------------------------|---------|----------------|
| 78      | <b>R453011</b>   | 3256-24,<br>453011,<br>R01-166-0100,<br>R01-166-0120,<br>R01-166-0270,<br>R01-166-0500,<br>R01-166-0600,<br>R01-166-0620,<br>R132-4593,<br>R237-12,<br>R24-10-AD,<br>R24-11-AD,<br>R24-11-BD,<br>R24-12-AD,<br>R24-12-BD,<br>R30-9310,<br>R32-8190,<br>R3256-24,<br>R3256-3,<br>R3256-36,<br>R3256-4,<br>R47-9950 | Washer - Flat 3/8 SAE Y/Zinc | 2       |                |
| 79      | <b>R233-19</b>   |   | Bolt - Hx HD 3/8-16 x 1 5/8  | 2       |                |
| 80      | <b>R151345</b>   |   | Bracket - Hydrostat          | 1       |                |
| 81      | <b>R237-65</b>   |   | O-Ring                       | 2       |                |
| 82      | <b>R340-139</b>  |   | Hydraulic Fitting - 90 Deg   | 1       |                |
| 83      | <b>R237-81</b>   |   | O-Ring                       | 2       |                |
| 84      | <b>R340-8</b>    |   | Adapter                      | 1       |                |
| 85      | <b>R100-4852</b> |   | Washer - Hardened            | 2       |                |

All original equipment manufacturers names and part numbers are used for identification purposes only, and we are in no way implying that our products are original equipment parts. Prices subject to change without notice.