

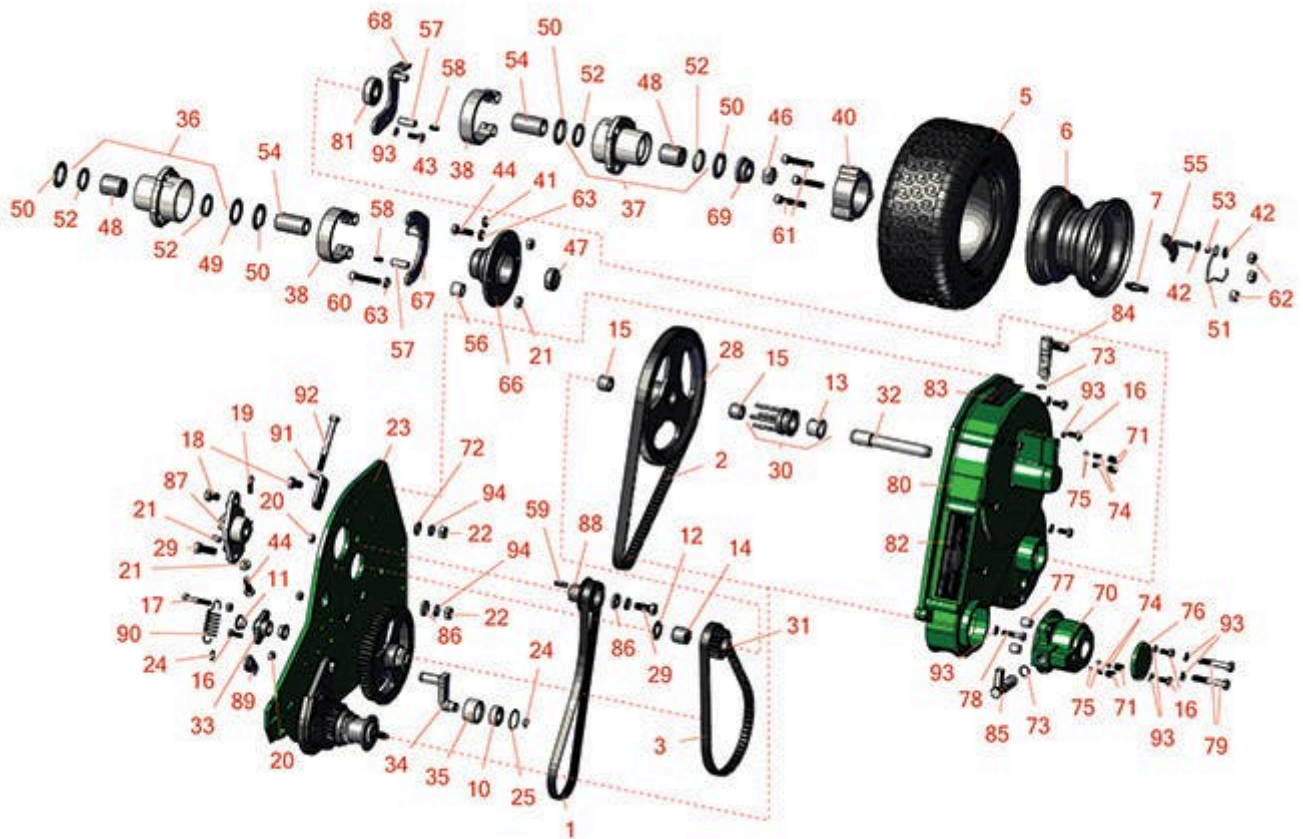


Replaces R&R Products Greens Max

4022 Parts

Traction Unit

Drive Belt & Brake



All original equipment manufacturers names and part numbers are used for identification purposes only, and we are in no way implying that our products are original equipment parts. Prices subject to change without notice.



Replaces R&R Products Greens Max

4022 Parts

Traction Unit

Drive Belt & Brake



Item No	R&R Part No.	OEM Part No.	Description	Qty Req	Order Quantity
Belts					
1	R2810713	R2810712	Belt - 7 Rib Micro V	1	
2	R5001124	R2811362, R2811363, R366666	Belt - 112 Tooth .460 Wide	1	
3	R5002403	R2811070, R2811071	Belt - 80 Tooth x 17mm WIDE(.669)	1	
Tires					
5	RCT5110101	R554847, RCT5753331	Tire - 11x4.00-5 Nhs (2 Ply) Carlisle Turf Saver	2	
<i>Detail Description: With its classic square shouldered design, the Turf Saver tire is the market leader for residential riding lawn mowers worldwide. The flat profile and chevron tread provide excellent traction. Its turf-friendly design and breadth of line make it versatile in both application and fitment.:</i>					
6	R5002905		Wheel Assy - 3x5	2	
7	R232-27	R232-31, R360111	Stem - Valve w/ Cap	2	
Other Parts Available					
10	R344545		Bearing - Roller Brush Brkt	1	
11	R352936		Bushing - Bronze	2	
12	R359864		Flat Washer - Hardened 5/8 x 1.100	0	
13	R366725		Bushing - Flanged	1	
14	R367553		Bearing - Needle	1	
15	R367554		Bearing - Needle	2	
16	R400106	R321-3, R513315, R908002P	Bolt - Hex HD 1/4-20 x 5/8	4	

All original equipment manufacturers names and part numbers are used for identification purposes only, and we are in no way implying that our products are original equipment parts. Prices subject to change without notice.



Replaces R&R Products Greens Max

4022 Parts

Traction Unit

Drive Belt & Brake



Item No	R&R Part No.	OEM Part No.	Description	Qty Req	Order Quantity
17	R400116	R20-7-AD, R30-9680, R321-9, R3222-3	Bolt - Hex HD 1/4-20 x 1-1/2	1	
18	R400254		Bolt - Hex HD 3/8-16 x 1/2	2	
19	R434031		Bolt - Soc HD Cap 1/4-20 x 3/4 Nyloc	1	
20	R443102	R01-188-0420, R22-11-AJD, R3217-5	Nut - 1/4-20 Yellow Zinc	10	
21	R443106	3218-2, 443106, R01-188-0518, R09003, R22-12-AJD, R32111-4, R3217-4, R3217-6, R513295, R513412, R915112P, R915978, R915979	Nut - 5/16-18 Y/Zinc Plated	3	
22	R443110		Nut - 3/8-16 Hex	2	
23	R2811121G		Frame - LH - Green	1	
24	R458006	R32151-61	Ring - Retaining	2	
25	R458105		Ring - Retaining	1	
28	R503685		Pulley - 80 Tooth	1	
29	RF3205	R400262	Bolt - Hex HD 3/8-16 x 1	2	
30	R1000056		Traction Clutch	1	
<i>Detail Description: Includes R366725:</i>					
31	R5002447		Pulley - 18 Tooth	1	

All original equipment manufacturers names and part numbers are used for identification purposes only, and we are in no way implying that our products are original equipment parts. Prices subject to change without notice.



Replaces R&R Products Greens Max

4022 Parts

Traction Unit

Drive Belt & Brake



Item No	R&R Part No.	OEM Part No.	Description	Qty Req	Order Quantity
32	R3001273		Shaft - Belts	1	
33	R2810550		Bracket - Idler	1	
34	R2809665		Idler - Arm	1	
35	R2809666		Pulley - Belt Idler	1	
36	R1000476		Hub Assy - RH	1	
<i>Detail Description: Includes R338766 & R366705:</i>					
37	R1000477		Hub Assy - LH	1	
<i>Detail Description: Includes R338766 & R366705:</i>					
38	R164056		Band - Brake	2	
40	R271920		Spacer - Wheel	2	
41	R302-5	R173-0, R21-6010, R255825, R302-37, R302-47, R302-57, R302-58, R302-6, R31-0300, R32-9660, R471214, R471223, R471226, R60-0800, R62-3880, R92-4181, RJD7797, RJD7842, RJD7844, RM0004, RZS48114-04	Fitting - Grease	1	

All original equipment manufacturers names and part numbers are used for identification purposes only, and we are in no way implying that our products are original equipment parts. Prices subject to change without notice.



Replaces R&R Products Greens Max

4022 Parts

Traction Unit

Drive Belt & Brake



Item No	R&R Part No.	OEM Part No.	Description	Qty Req	Order Quantity
42	R453009	3256-3, R01-166-0400, R24-10-BD, R24-9-AD, R24H1136, R32-9650, R3256-2, R3256-23, R3256-67, R3290-217, R3556-3, R4-2390, R452006, R7-0152	Washer - Flat 5/16 SAE	12	
43	R321-4	400108, R01-150-1030, R01-178-0406, R20-3-AGD, R3222-1, R400108	Bolt - Hex HD 1/4-20 x 3/4	5	
44	R434004	434004, R434003	Screw - Soc HD 5/16-18 x 1	1	
46	R3296-33	R444820, R445801	Locknut - 5/8-18 ESNA Jam	2	
47	R337678	R365743, R365753	Seal - Clutch Shaft Bearing	1	
48	R338766		Bearing - Clutch Differential Shaft	1	
49	R361451		Flat Washer 1 x 1-1/2 Hardened Thrust	1	
50	R366697		Spacer - Bronze Thrust	4	
51	R366704		Spring - Wheel Lock	2	
52	R366705		Seal - Grease	4	
53	R366716		Spacer - Wheel	6	
54	R366717		Clutch Sleeve - Wheel	2	

All original equipment manufacturers names and part numbers are used for identification purposes only, and we are in no way implying that our products are original equipment parts. Prices subject to change without notice.



Replaces R&R Products Greens Max

4022 Parts

Traction Unit

Drive Belt & Brake



Item No	R&R Part No.	OEM Part No.	Description	Qty Req	Order Quantity
55	R366719		Latch - Wheel	2	
56	R366737		Spacer - Wheel	2	
57	R366742		Pivot Pin w/Set Screw - Brake Band	2	
58	R415513		Screw - Set 1/4-20 x 1/2 Cup Pt	2	
59	R367082		Key - 3/16 Sq. x 3/4	1	
60	R434032		Screw - Soc HD 5/16-18 x 1-3/4	2	
61	R434049	434049	Bolt - Soc HD Cap 5/16-18 x 2	6	
62	R444718	444718	Nut - 5/16-18 Center Lock YZ	6	
63	R446136	446136, R446134	Washer - Lock 5/16 Zinc	10	
66	R132658		Housing - Parking Brake	1	
67	R132663		Bracket - Brake Mounting RH	1	
68	R164063		Bracket - Brake Mounting LH	1	
69	R366718		Latching Collar - Wheel	1	
70	R220317G		Shifter Housing - Green	1	
71	R250413		Screw - Set 3/8-16 x 1/2	4	

All original equipment manufacturers names and part numbers are used for identification purposes only, and we are in no way implying that our products are original equipment parts. Prices subject to change without notice.



Replaces R&R Products Greens Max

4022 Parts

Traction Unit

Drive Belt & Brake



Item No	R&R Part No.	OEM Part No.	Description	Qty Req	Order Quantity
72	R453011	3256-24, 453011, R01-166-0100, R01-166-0120, R01-166-0270, R01-166-0500, R01-166-0600, R01-166-0620, R132-4593, R237-12, R24-10-AD, R24-11-AD, R24-11-BD, R24-12-AD, R24-12-BD, R30-9310, R32-8190, R3256-24, R3256-3, R3256-36, R3256-4, R47-9950	Washer - Flat 3/8 SAE Y/Zinc	2	
73	R339910		O-Ring	2	
74	R343848		Spring	4	
75	R343850		Ball Bearing - 1/4	4	
76	R366710G		Cover - Green	1	
77	R366715		Spacer	2	
78	RP1471-1	R01-150-1400, R20-5-AD, R3-8297, R30-8880, R321-6, R3222-2, R513320	Bolt - Hex HD 1/4-20 x 1	4	
79	R400196		Bolt - Hex HD 5/16-18 x 2	2	
80	R503638G	R50368G	Belt Cover - Green	1	

All original equipment manufacturers names and part numbers are used for identification purposes only, and we are in no way implying that our products are original equipment parts. Prices subject to change without notice.



Replaces R&R Products Greens Max

4022 Parts

Traction Unit

Drive Belt & Brake



Item No	R&R Part No.	OEM Part No.	Description	Qty Req	Order Quantity
81	R203603	R366707, R832498, RJD8535	Bearing	1	
82	R2811092		Decal - Warning	1	
83	R3001792		Decal - Reel Clutch	1	
84	R3000660		Traction Clutch Lever	1	
85	R3004402		Lever - Shifter Shaft	1	
86	R366653	R71-9310	Spacer	1	
87	R2000148		Bracket - Bearing	1	
88	R3007847		Pulley - 7 Rib Micro V	1	
89	R2809667		Bracket - Idler - Spring	1	
90	R2809669		Spring - Idler	1	
91	R3009434		Bracket - Belt Adjusting	1	
92	R2500485		Bolt - Hex HD 5/16-18 x 3	1	
93	R3253-3	446130, R01-166-0070, R01-166-0410, R23-9-GD, R24-7150, R352-167, R446128, R446130	Washer - Lock 1/4	14	

All original equipment manufacturers names and part numbers are used for identification purposes only, and we are in no way implying that our products are original equipment parts. Prices subject to change without notice.



Replaces R&R Products Greens Max

4022 Parts

Traction Unit

Drive Belt & Brake



Item No	R&R Part No.	OEM Part No.	Description	Qty Req	Order Quantity
94	R3254-6	446142, R01-166-0010, R01-166-0280, R01-166-0610, R12H304, R3253-5, R3254-18, R3290-223, R446140, R446142, R48-9370	Washer - Lock 3/8	3	

All original equipment manufacturers names and part numbers are used for identification purposes only, and we are in no way implying that our products are original equipment parts. Prices subject to change without notice.