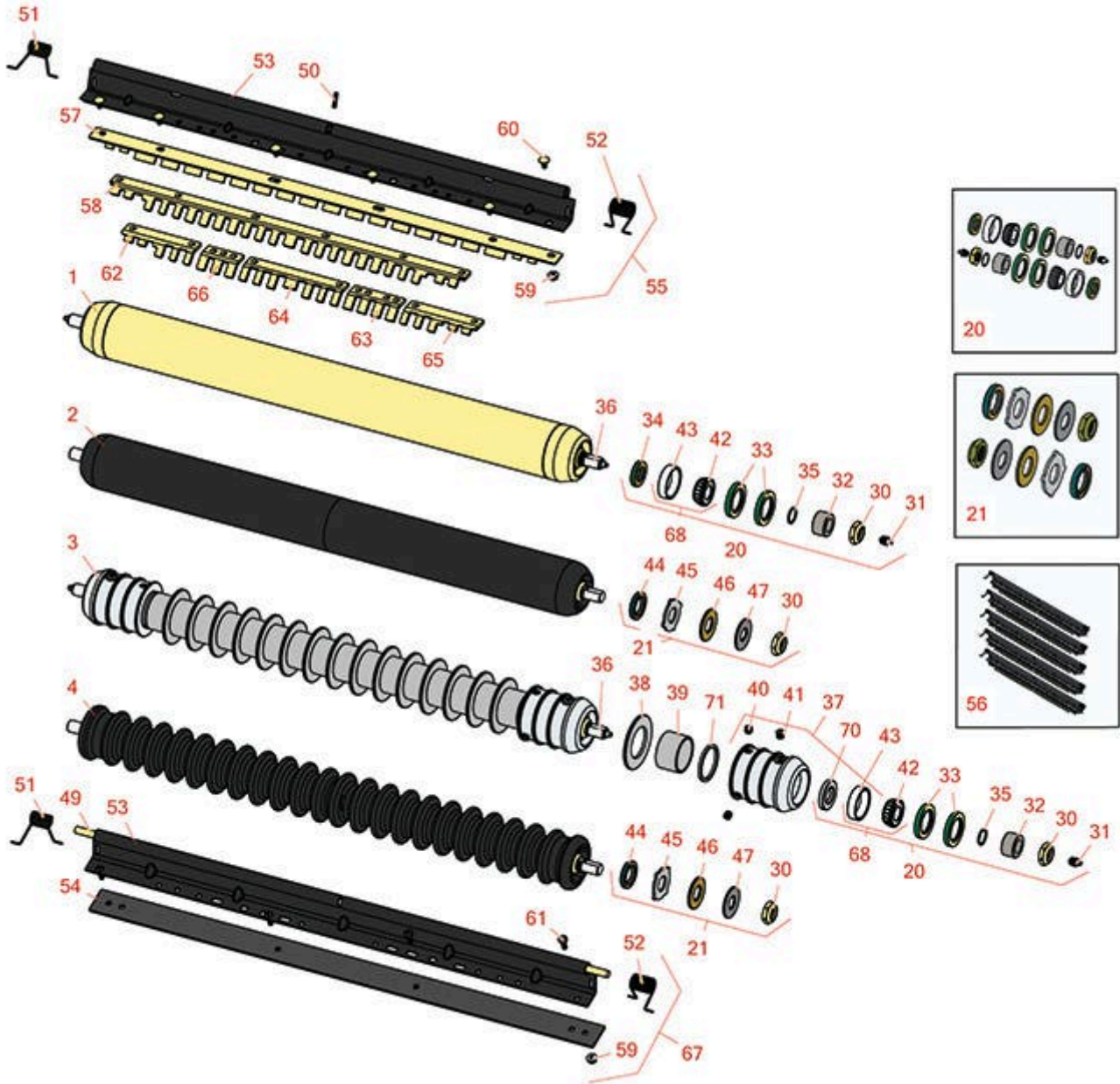




Replaces John Deere Gang Mower Parts

ESP Cutting Unit Model 303, 305, 756, 856, 3325 & 3365
Rollers



All original equipment manufacturers names and part numbers are used for identification purposes only, and we are in no way implying that our products are original equipment parts. Prices subject to change without notice.



Replaces John Deere Gang Mower Parts

ESP Cutting Unit Model 303, 305, 756, 856, 3325 & 3365
Rollers



Item No	R&R Part No.	OEM Part No.	Description	Qty Req	Order Quantity
R&R Rollers					
1	RAET10873	AET10873, AMT2961	Roller - Smooth Tubular Steel 26	0	
<i>Tech Note: Constructed with a through shaft, this heavy duty roller uses greasable tapered bearings for extended life.:</i>					
2	R1203610		Roller - Smooth UHMW Polyethylene	0	
<i>Tech Note: Machined from solid UHMW, this low maintenance roller uses a 1" solid stainless steel shaft and requires no grease. UHMW material prevents build-up of debris.:</i>					
3	R500508		Roller - Grooved Repairable Steel	0	
<i>Tech Note: Constructed with a through shaft and greasable ball bearings, this roller can be repaired by unscrewing the ends and replacing the series of washers and spacers.:</i>					
4	R1203600		Roller - Grooved UHMW Polyethylene	0	
<i>Tech Note: Machined from solid UHMW, this low maintenance roller rotates around a 1" solid stainless steel shaft and requires no bearings or grease. Patented groove design and smooth UHMW material prevents build-up of debris:</i>					
Overhaul Kits					
20	RAET10632	AET10632	Overhaul Kit - Roller	0	
<i>Tech Note: Includes 4 ea: RET15755 Seal; 2 ea: R237-54 O-Ring, R253-122 Seal, R254-78 Bearing, R254-79 Cup, R3296-15 Locknut, R471219 Grease Zerk, RET15726 Sleeve, RET15756 Seal:</i>					
21	R101399		Overhaul Kit - UHMW 2 Pc Roller	1	
<i>Tech Note: Fits all R&R 2-1/2" - 3-1/2" Dia. Black UHMW Plastic Rollers that do not use ball bearings.. Includes 2 ea.: R1503230 Star Washers, R1503470 Seals, R150333 Thrust Washers, R3296-15 Locknuts, R1503471 Bronze Thrust Washers:</i>					
Other Parts Available					
30	R3296-15	N101345	Locknut - 3/4-16 Nylon Jam	2	

All original equipment manufacturers names and part numbers are used for identification purposes only, and we are in no way implying that our products are original equipment parts. Prices subject to change without notice.



Replaces John Deere Gang Mower Parts

ESP Cutting Unit Model 303, 305, 756, 856, 3325 & 3365
Rollers



Item No	R&R Part No.	OEM Part No.	Description	Qty Req	Order Quantity
31	R471219	471219, JD7759, JD7798	Zerk - Grease	2	
32	RET15726	ET15726, RET15726	Sleeve - Wear Hardened	2	
33	RET15755	ET15755	Seal - Oil	4	
34	RET15756	ET15756, MT1739, MT739	Seal	2	
35	R237-54	U46731, U6731	O-Ring - Small	2	
36	RET16934	ET16934	Shaft - Roller	1	
37	R500511		Roller End - Threaded 3	2	
38	R150673		Washer - 3 Repairable Roller	15	
39	R150676		Spacer - 2-3/4 Dia x 1-1/4 L	16	
40	R150691		Screw - Set Nyloc 3/8-16 x 3/8	4	
41	R170714	E14814	Fitting - Pressure Relief	2	
42	R254-78	JD8188	Tapered Bearing Cone	2	
43	R254-79	JD8226	Cup - Bearing	2	
<i>Tech Note: Use R254-79M installation mandrel to properly install race.:</i>					
44	R1503470		Seal - Inner Wiper	2	
45	R1503230		Washer - Thrust Outer Keyed	2	
46	R1503471		Washer - Thrust SAE660 Bronze	2	
47	R150333		Washer - Flat Keyed Outer SS	2	

All original equipment manufacturers names and part numbers are used for identification purposes only, and we are in no way implying that our products are original equipment parts. Prices subject to change without notice.



Replaces John Deere Gang Mower Parts

ESP Cutting Unit Model 303, 305, 756, 856, 3325 & 3365
Rollers



Item No	R&R Part No.	OEM Part No.	Description	Qty Req	Order Quantity
49	RET16931	ET16931	Pin - 30 Scraper	1	
50	R34M7010	34M7010	Pin - Spring	1	
51	RET17630	ET17630	Spring - Torsion RH	1	
52	RET17629	ET17629	Spring - Torsion LH	1	
53	R500570		Bar - 30 Scraper	1	
54	RMT2593	MT2593	Blade - 30 Scraper	1	
55	R500566		Scraper - Assy Fits R500508	5	
<i>Tech Note: Incl R500567 Scraper:</i>					
55	R500568		Scraper - Assy 30 Fits OEM	5	
<i>Tech Note: Incl: R500569 Scraper:</i>					
56	RBM18607	BM18607	Scraper Kit - OEM Grooved Roller Set / 5	1	
<i>Tech Note: Includes 30 ea: R03M7251 Bolt, R14M7303 Bolt; 5 ea: R34M7010 Pin, R500569 Scraper, R500570 Bar, RET16931 Pin, RET17629 LH Spring, RET17630 RH Spring:</i>					
57	R500567		Scraper - 30 in Fits R500508	1	
58	R500569		Scraper - 30 in Fits OEM	1	
59	R14M7303	14M7303	Nut - 6mm x 1.0 Flanged	0	
60	R03M7251	03M7251	Bolt - Gr. Roller Scraper	0	
61	R21M7246	21M7246	Screw	0	
62	RMT5158	MT5158	Scraper - Fits J.D. RH End	1	
63	RMT2341	MT2341	Section - Grooved Scraper 4 Tooth	3	
64	RMT2340	MT2340	Scraper - Fits J.D. Center	1	

All original equipment manufacturers names and part numbers are used for identification purposes only, and we are in no way implying that our products are original equipment parts. Prices subject to change without notice.



Replaces John Deere Gang Mower Parts

ESP Cutting Unit Model 303, 305, 756, 856, 3325 & 3365
Rollers



Item No	R&R Part No.	OEM Part No.	Description	Qty Req	Order Quantity
65	RMT5159	MT5159	Scraper - Fits J.D. LH End	1	
66	RMT2342	MT2342	Section - Grooved Scraper 3 Tooth	1	
67	RAMT1379	AMT1379	Scraper - Assy Solid Roller 30	1	
68	R500534		Bearing - with Cup	2	
70	R253-122	253-122	Seal	2	
71	R150676A		Spacer - 1/8	4	

All original equipment manufacturers names and part numbers are used for identification purposes only, and we are in no way implying that our products are original equipment parts. Prices subject to change without notice.