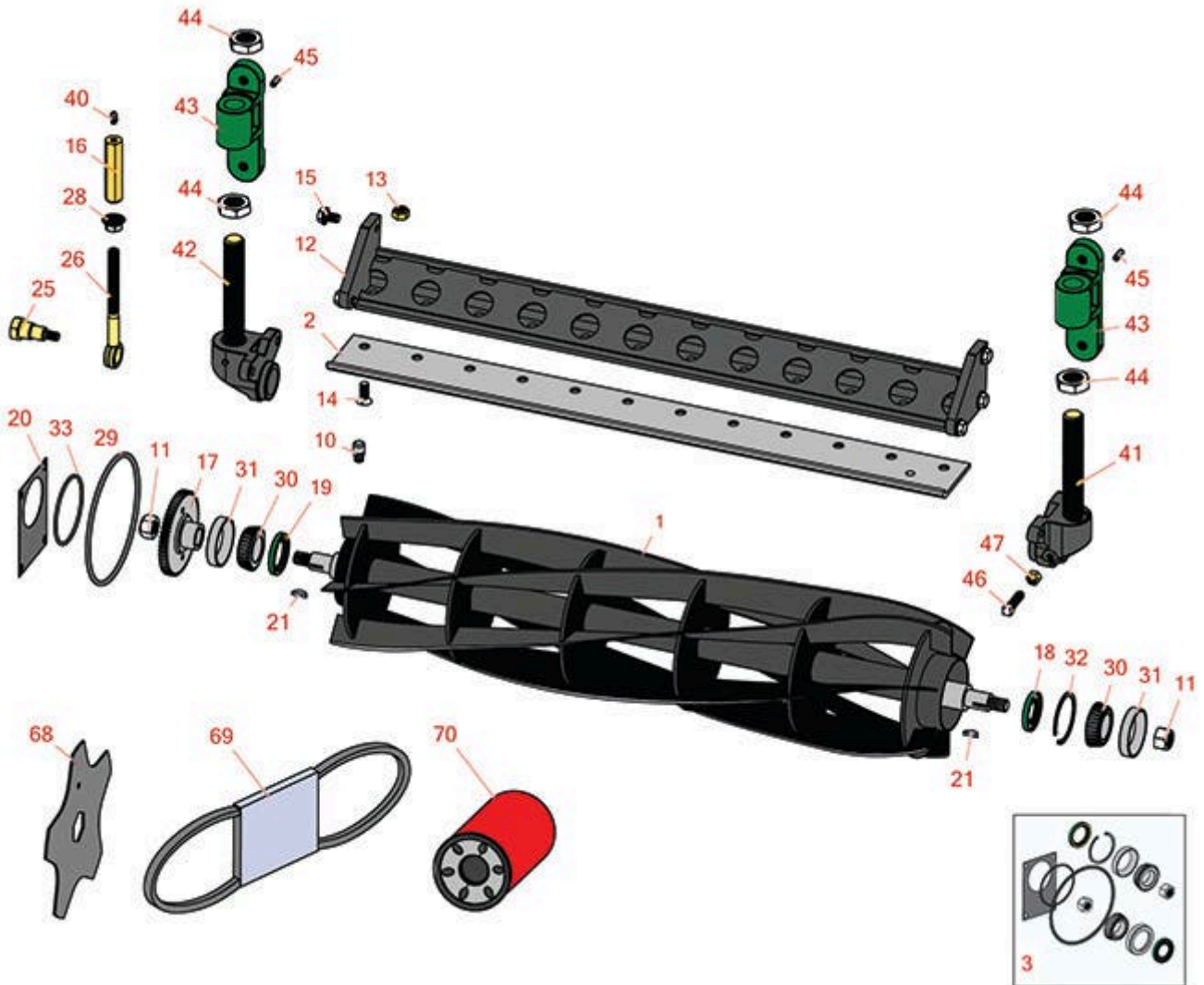




# Replaces John Deere Gang Mower Parts

ESP Cutting Unit Model 303, 305, 756, 856, 3325 & 3365  
Reel & Bedknife



All original equipment manufacturers names and part numbers are used for identification purposes only, and we are in no way implying that our products are original equipment parts. Prices subject to change without notice.



# Replaces John Deere Gang Mower Parts

ESP Cutting Unit Model 303, 305, 756, 856, 3325 & 3365  
Reel & Bedknife



Item No	R&R Part No.	OEM Part No.	Description	Qty Req	Order Quantity
<b>R&amp;R Reels, Lifetime Guaranteed</b>					
1	RAET10856	AET10856, AMT2887	Reel - 6 Blade	1	
1	RAET10857	AET10857	Reel - 8 Blade	1	
1	RAET10858	AET10858	Reel - 10 Blade	1	
<b>R&amp;R Bedknives, Lifetime Guaranteed</b>					
2	RET16755	ET16755	Bedknife - Low Cut 3/8	1	
2	RET16756	ET16756	Bedknife - Standard 1/2	1	
<b>Overhaul Kits</b>					
3	R100171		Overhaul Kit - Cutting Unit	0	
<i>Tech Note: Includes 2 ea.: RJD8225 Bearing Cups, RJD8187 Bearing Cones &amp; RA31869 Locknuts; 1 ea.: RM18237 Snap Ring, RAP19509 Seal, RU10776 O-Ring, RET10873 Gasket, RH88900 O-Ring &amp; RAN121759 Seal:</i>					
<b>Other Parts Available</b>					
10	R302-14	JD5801	Fitting - Relief	1	
11	RA31869	A31869	Locknut - Reel	2	
12	RAET10829	AET10829	Backing Bar - Bed Knife	1	
13	R14M7400	14M7400	Locknut - 10mm	12	
14	R19M5055	19M5055, 19M8551	Screw - Bedknife M10-1.5 x 25	12	
15	R19M7783	19M7783	Screw - Bed Bar Mount	6	
16	RAET10880	AET10880, AMT2965	Adjuster - Reel	2	
17	RAET11211	AET11211	Gear - Reel Includes Brg	1	

All original equipment manufacturers names and part numbers are used for identification purposes only, and we are in no way implying that our products are original equipment parts. Prices subject to change without notice.



# Replaces John Deere Gang Mower Parts

ESP Cutting Unit Model 303, 305, 756, 856, 3325 & 3365  
Reel & Bedknife



Item No	R&R Part No.	OEM Part No.	Description	Qty Req	Order Quantity
18	<b>RAN121759</b>	AN121759	Seal	1	
19	<b>RAP19509</b>	AP19509	Seal	1	
20	<b>RET10873</b>	ET10873	Gasket - Hyd Motor	1	
21	<b>R26H76</b>	26H76	Key - Woodruff Reel	2	
25	<b>RET16896</b>	ET16896	Bolt - Shoulder	2	
26	<b>RET16897</b>	ET16897	Eyebolt	2	
28	<b>RET17361</b>	ET17361	Nut - Flanged Eyebolt	2	
29	<b>RH88900</b>	H88900	O-Ring - Gear Case Cover	1	
30	<b>RJD8187</b>	JD8187	Tapered Bearing Cone	2	
31	<b>RJD8225</b>	JD8225	Tapered Bearing Cup	2	
32	<b>RM18237</b>	M18237	Ring - Snap	1	
33	<b>RU10776</b>	U10776	O-Ring	1	
40	<b>R302-5</b>	JD7797, JD7842, JD7844	Fitting - Grease	2	
41	<b>RAET10854</b>	AET10854	Adjuster - Roller Oblong Hole	2	
42	<b>RAET10855</b>	AET10855	Adjuster - Roller Round Hole	2	
43	<b>RAET10877</b>	AET10877	Support - Roller	4	
44	<b>R14M7240</b>	14M7240	Nut - 24mm x 3.0 Fin Hex Jam	8	
45	<b>RR30587</b>	30587, R30587	Pin - Dowell 1/4 Dia. x .75	4	
46	<b>RMT49</b>	MT49	Screw - Set 10mm x 1.5 x 35mm Sh	2	

All original equipment manufacturers names and part numbers are used for identification purposes only, and we are in no way implying that our products are original equipment parts. Prices subject to change without notice.



# Replaces John Deere Gang Mower Parts

ESP Cutting Unit Model 303, 305, 756, 856, 3325 & 3365  
Reel & Bedknife



Item No	R&R Part No.	OEM Part No.	Description	Qty Req	Order Quantity
47	<b>RM82222</b>	M82222	Locknut	2	
68	<b>RET17647</b>	ET17647	Blade - Vertical Mower	0	
68	<b>RET17647C</b>		Verti-Cut Blade - Carbide Tipped	0	
69	<b>RM801821</b>	M801821	Belt - Engine Fan	1	
70	<b>RAT120444</b>	AT120444	Filter - Hyd Oil w/Gasket	1	

All original equipment manufacturers names and part numbers are used for identification purposes only, and we are in no way implying that our products are original equipment parts. Prices subject to change without notice.