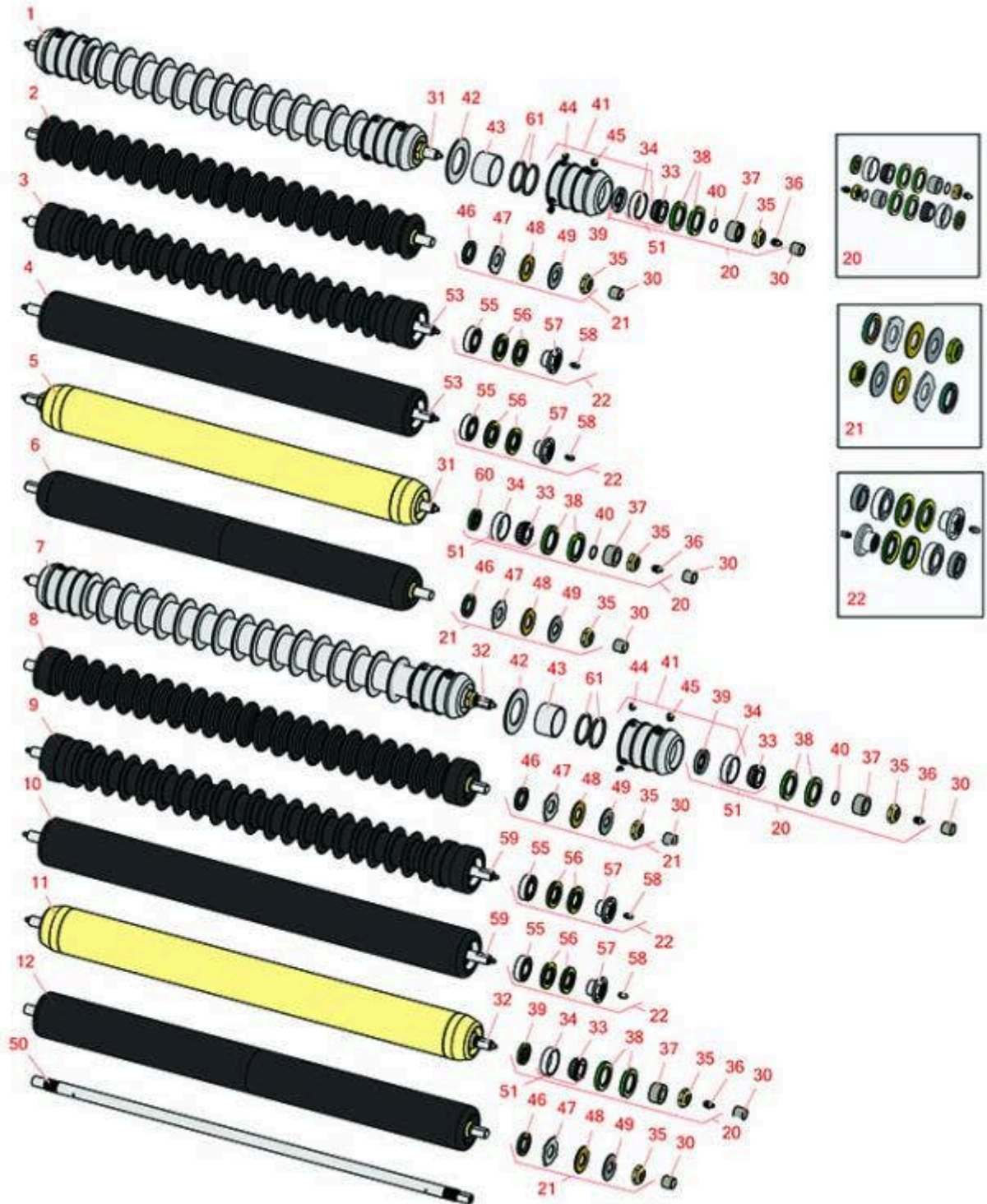




# Replaces John Deere 2653A Reel Mower

## Parts

Cutting Unit - Serial up to 030000  
Rollers



All original equipment manufacturers names and part numbers are used for identification purposes only, and we are in no way implying that our products are original equipment parts. Prices subject to change without notice.



# Replaces John Deere 2653A Reel Mower Parts

Cutting Unit - Serial up to 030000  
Rollers



Item No	R&R Part No.	OEM Part No.	Description	Qty Req	Order Quantity
---------	--------------	--------------	-------------	---------	----------------

## R&R 26" Front Rollers

1	<b>R500509</b>	AMT2968, BM25318	Roller - Grooved Repairable Steel - 26	0	
---	----------------	---------------------	--	---	--

*Tech Note: Constructed with a through shaft and greasable ball bearings. This roller can be repaired by unscrewing the ends and replacing the series of washers and spacers.:*

2	<b>R1203500</b>		Roller - Grooved UHMW Polyethylene	0	
---	-----------------	--	------------------------------------	---	--

*Tech Note: Machined from solid UHMW, this low maintenance roller rotates around a 1" solid stainless steel shaft and requires no bearings or grease. Patented groove design and smooth UHMW material prevents build-up of debris.:*

3	<b>R1203830</b>		Roller - Fusion Grooved UHMW Polyethylene - 26 in	0	
---	-----------------	--	---	---	--

*Tech Note: Fusion Rollers combine the best features of our UHMW plastic rollers with a heavy-duty internal bearing system. Machined from solid UHMW plastic that prevents build-up of debris. This roller has a patented deep groove design and ... <Click Part# for more>:*

## R&R 26" Rear Rollers

4	<b>R1203835</b>		Roller - Fusion Smooth UHMW Polyethylene - 26 in	0	
---	-----------------	--	--	---	--

*Tech Note: Fusion Rollers combine the best features of our UHMW plastic rollers with a heavy-duty internal bearing system. Machined from solid UHMW plastic that prevents build-up of debris. This roller turns on precision stainless ball bear... <Click Part# for more>:*

5	<b>RAET11265</b>	AMT2969	Roller - Smooth Heavy Duty Tubular Steel - 26	0	
---	------------------	---------	---	---	--

*Tech Note: Constructed with a through shaft, this heavy-duty roller uses tapered bearings for extended life.:*

6	<b>R1203521</b>		Roller - Smooth UHMW Polyethylene	0	
---	-----------------	--	-----------------------------------	---	--

*Tech Note: Machined from solid UHMW, this low maintenance roller uses a 1" solid stainless steel shaft and requires no grease. UHMW material prevents build-up of debris.:*

## R&R 30" Front Rollers

All original equipment manufacturers names and part numbers are used for identification purposes only, and we are in no way implying that our products are original equipment parts. Prices subject to change without notice.



# Replaces John Deere 2653A Reel Mower Parts

Cutting Unit - Serial up to 030000  
Rollers



Item No	R&R Part No.	OEM Part No.	Description	Qty Req	Order Quantity
---------	--------------	--------------	-------------	---------	----------------

7	<b>R500514</b>	AMT2977, BM25319	Roller - Grooved Repairable Steel - 30	0	
---	----------------	---------------------	--	---	--

*Tech Note: Constructed with a through shaft and greasable ball bearings. This roller can be repaired by unscrewing the ends and replacing the series of washers and spacers.:*

8	<b>R1203510</b>		Roller - Grooved UHMW Polyethylene	0	
---	-----------------	--	------------------------------------	---	--

*Tech Note: Machined from solid UHMW, this low maintenance roller rotates around a 1" solid stainless steel shaft and requires no bearings or grease. Patented groove design and smooth UHMW material prevents build-up of debris.:*

9	<b>R1203840</b>		Roller - Fusion Grooved UHMW Polyethylene - 30 in	0	
---	-----------------	--	---	---	--

*Tech Note: Fusion Rollers combine the best features of our UHMW plastic rollers with a heavy-duty internal bearing system. Machined from solid UHMW plastic that prevents build-up of debris. This roller has a patented deep groove design and ... <Click Part# for more>:*

## R&R 30" Rear Rollers

10	<b>R1203845</b>		Roller - Fusion Smooth UHMW Polyethylene - 30 in	0	
----	-----------------	--	--	---	--

*Tech Note: Fusion Rollers combine the best features of our UHMW plastic rollers with a heavy-duty internal bearing system. Machined from solid UHMW plastic that prevents build-up of debris. This roller turns on precision stainless ball bear... <Click Part# for more>:*

11	<b>RAMT1056</b>	AMT2976	Roller - Smooth Heavy Duty Tubular Steel - 30	0	
----	-----------------	---------	---	---	--

*Tech Note: Constructed with a through shaft, this heavy duty roller uses tapered bearings for extended life.:*

12	<b>R1203530</b>		Roller - Smooth UHMW Polyethylene	0	
----	-----------------	--	-----------------------------------	---	--

*Tech Note: Machined from solid UHMW, this low maintenance roller uses a 1" solid stainless steel shaft and requires no grease. UHMW material prevents build-up of debris.:*

## Overhaul Kits

20	<b>RAET10632</b>	AET10632	Overhaul Kit - Roller	1	
----	------------------	----------	-----------------------	---	--

All original equipment manufacturers names and part numbers are used for identification purposes only, and we are in no way implying that our products are original equipment parts. Prices subject to change without notice.



# Replaces John Deere 2653A Reel Mower Parts

Cutting Unit - Serial up to 030000  
Rollers



Item No	R&R Part No.	OEM Part No.	Description	Qty Req	Order Quantity
<i>Tech Note: Includes 4 ea: RET15755 Seal; 2 ea: R237-54 O-Ring, R253-122 Seal, R254-78 Bearing, R254-79 Cup, R3296-15 Locknut, R471219 Grease Zerk, RET15726 Sleeve, RET15756 Seal:</i>					
21	<b>R101399</b>		Overhaul Kit - UHMW 2 Pc Roller	1	
<i>Tech Note: Fits all R&amp;R 2-1/2" - 3-1/2" Dia. Black UHMW Plastic Rollers that do not use ball bearings.. Includes 2 ea.: R1503230 Star Washers, R1503470 Seals, R150333 Thrust Washers, R3296-15 Locknuts, R1503471 Bronze Thrust Washers:</i>					
22	<b>R114-5430</b>		Overhaul Kit - Roller	1	
<i>Tech Note: Includes 4 ea.: R112-7494 Seals; 2 ea.: R302-5 Grease Zerks, R114-3717 Seals, R112-5290 Bearings &amp; R114-3745 Locknuts:</i>					
<b>Other Parts Available</b>					
30	<b>RMT74</b>	MT74	Bushing - Roller Bkt	2	
31	<b>RET17514</b>	ET17514	Shaft - 26 Roller	1	
32	<b>RMT1986</b>	MT1986	Shaft - 30 Roller	1	
33	<b>R254-78</b>	JD8188	Tapered Bearing Cone	2	
34	<b>R254-79</b>	JD8226	Cup - Bearing	2	
<i>Tech Note: Use R254-79M installation mandrel to properly install race.:</i>					
35	<b>R3296-15</b>	N101345	Locknut - 3/4-16 Nylon Jam	2	
36	<b>R471219</b>	471219, JD7759, JD7798	Zerk - Grease	2	
37	<b>RET15726</b>	ET15726, RET15726	Sleeve - Wear Hardened	2	
38	<b>RET15755</b>	ET15755	Seal - Oil	4	
39	<b>R253-122</b>	253-122	Seal	2	
40	<b>R237-54</b>	U46731, U6731	O-Ring - Small	2	

All original equipment manufacturers names and part numbers are used for identification purposes only, and we are in no way implying that our products are original equipment parts. Prices subject to change without notice.



# Replaces John Deere 2653A Reel Mower Parts

*Cutting Unit - Serial up to 030000  
Rollers*



Item No	R&R Part No.	OEM Part No.	Description	Qty Req	Order Quantity
41	R150661		Tube - Threaded Fits R500509	1	
41	R150662		Tube - Threaded Grooved Rlr	1	
41	R500511		Roller End - Threaded 3	2	
42	R150673		Washer - 3 Repairable Roller	0	
43	R150676		Spacer - 2-3/4 Dia x 1-1/4 L	0	
44	R150691		Screw - Set Nyloc 3/8-16 x 3/8	4	
45	R170714	E14814	Fitting - Pressure Relief	2	
46	R1503470		Seal - Inner Wiper	2	
47	R1503230		Washer - Thrust Outer Keyed	2	
48	R1503471		Washer - Thrust SAE660 Bronze	2	
49	R150333		Washer - Flat Keyed Outer SS	2	
50	RET16934	ET16934	Shaft - Roller	1	
51	R500534		Bearing - with Cup	2	
53	R1203831		Shaft - Fusion Roller	1	
55	R112-5290		Bearing - Stainless	2	
56	R112-7494		Seal	4	
57	R114-3745		Locknut - Bearing - Stainless	2	
58	R302-5	JD7797, JD7842, JD7844	Fitting - Grease	2	
59	R1203841		Shaft - Fusion Roller	1	
60	RET15756	ET15756, MT1739, MT739	Seal	2	

All original equipment manufacturers names and part numbers are used for identification purposes only, and we are in no way implying that our products are original equipment parts. Prices subject to change without notice.



# Replaces John Deere 2653A Reel Mower Parts



*Cutting Unit - Serial up to 030000  
Rollers*

Item No	R&R Part No.	OEM Part No.	Description	Qty Req	Order Quantity
61	<b>R150676A</b>		Spacer - 1/8	4	

All original equipment manufacturers names and part numbers are used for identification purposes only, and we are in no way implying that our products are original equipment parts. Prices subject to change without notice.