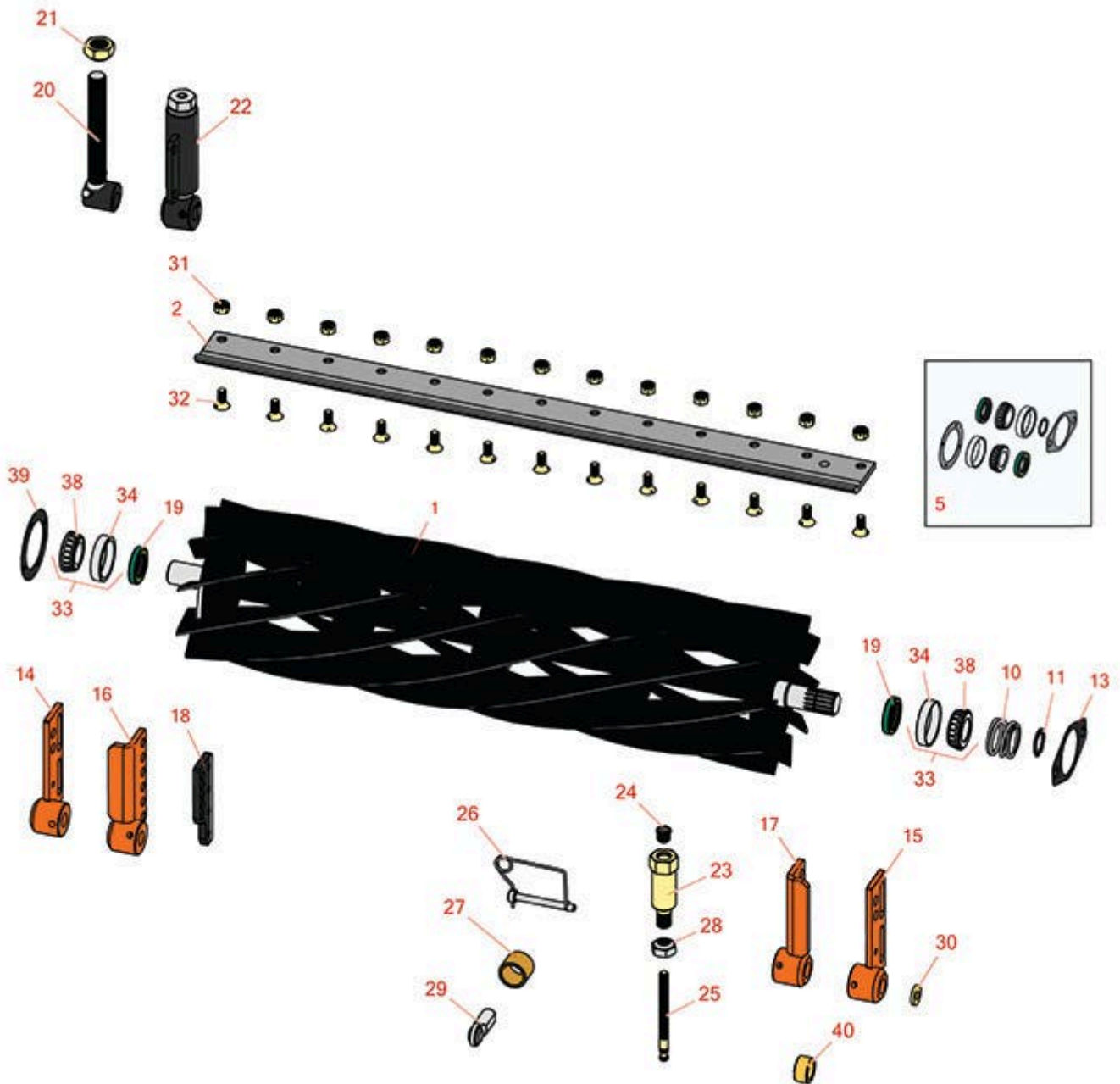




# Replaces Jacobsen Tri-King 1800G Parts

Cutting Unit  
Reel & Bedknife



All original equipment manufacturers names and part numbers are used for identification purposes only, and we are in no way implying that our products are original equipment parts. Prices subject to change without notice.



# Replaces Jacobsen Tri-King 1800G Parts

Cutting Unit  
Reel & Bedknife



Item No	R&R Part No.	OEM Part No.	Description	Qty Req	Order Quantity
---------	--------------	--------------	-------------	---------	----------------

## R&R 26" Reels, Lifetime Guaranteed

1	<b>R503274</b>	122547, 503274	Reel - 5 Blade LH 26 in	1
---	----------------	-------------------	-------------------------	---

*Tech Note:* Note drive motor position when seated in the mower facing forward. This Reel should have the motor on the RIGHT hand side:

1	<b>R503275</b>	122546, 503275	Reel - 5 Blade RH 26 in	1
---	----------------	-------------------	-------------------------	---

*Tech Note:* Note drive motor position when seated in the mower facing forward. This Reel should have the motor on the LEFT hand side:

1	<b>R5002088</b>	5002088	Reel - 7 Blade RH 26 in	1
---	-----------------	---------	-------------------------	---

*Tech Note:* Note drive motor position when seated in the mower facing forward. This Reel should have the motor on the LEFT hand side:

1	<b>R5002087</b>	5002087	Reel - 7 Blade LH - 26 in	1
---	-----------------	---------	---------------------------	---

*Tech Note:* Note drive motor position when seated in the mower facing forward. This Reel should have the motor on the RIGHT hand side:

1	<b>R503276</b>	122549, 503276	Reel - 10 Blade LH/Center - 26 in	1
---	----------------	-------------------	-----------------------------------	---

*Tech Note:* Note drive motor position when seated in the mower facing forward. This Reel should have the motor on the RIGHT hand side:

1	<b>R503277</b>	122548, 503277	Reel - 10 Blade RH - 26 in	1
---	----------------	-------------------	----------------------------	---

*Tech Note:* Note drive motor position when seated in the mower facing forward. This Reel should have the motor on the LEFT hand side:

## R&R 30" Reels, Lifetime Guaranteed

1	<b>R503359</b>	503359	Reel - 5 Blade LH/Center - 30 in	1
---	----------------	--------	----------------------------------	---

*Tech Note:* Note drive motor position when seated in the mower facing forward. This Reel should have the motor on the RIGHT hand side:

1	<b>R503360</b>	503360	Reel - 5 Blade RH 30 in	1
---	----------------	--------	-------------------------	---

All original equipment manufacturers names and part numbers are used for identification purposes only, and we are in no way implying that our products are original equipment parts. Prices subject to change without notice.



# Replaces Jacobsen Tri-King 1800G Parts

Cutting Unit  
Reel & Bedknife



Item No	R&R Part No.	OEM Part No.	Description	Qty Req	Order Quantity
---------	--------------	--------------	-------------	---------	----------------

*Tech Note:* Note drive motor position when seated in the mower facing forward. This Reel should have the motor on the LEFT hand side:

1	<b>R5002090</b>	5002090	Reel - 7 Blade RH 30 in	1	
---	-----------------	---------	-------------------------	---	--

*Tech Note:* Note drive motor position when seated in the mower facing forward. This Reel should have the motor on the LEFT hand side:

1	<b>R5002089</b>	5002089	Reel - 7 Blade LH - 30 in	1	
---	-----------------	---------	---------------------------	---	--

*Tech Note:* Note drive motor position when seated in the mower facing forward. This Reel should have the motor on the RIGHT hand side:

1	<b>R503361</b>	503361	Reel - 10 Blade LH/Center - 30 in	1	
---	----------------	--------	-----------------------------------	---	--

*Tech Note:* Note drive motor position when seated in the mower facing forward. This Reel should have the motor on the RIGHT hand side:

1	<b>R503362</b>	503362	Reel - 10 Blade RH - 30 in	1	
---	----------------	--------	----------------------------	---	--

*Tech Note:* Note drive motor position when seated in the mower facing forward. This Reel should have the motor on the LEFT hand side:

## R&R Bedknives, Lifetime Guaranteed

2	<b>R503550</b>	331692, 503363, 503550	Bedknife - 30 in (13 Hole)	1	
---	----------------	------------------------------	----------------------------	---	--

2	<b>R3000249</b>	3000249, 336419, 554284	Bedknife - 7/16 - 26 Inch	1	
---	-----------------	-------------------------------	---------------------------	---	--

## Overhaul Kits & Service Tools

5	<b>R100132</b>		Overhaul Kit - Cutting Unit	1	
---	----------------	--	-----------------------------	---	--

*Tech Note:* Includes 2 ea.: R254-72 Bearing Cups, R254-94 Bearing Cones & R337593 Seals; 1 ea.: R364777 Gasket, R364147 Gasket & R458039 Retaining Ring:

## Other Parts Available

10	<b>R364148</b>	364148	Spring - Reel Brg Tension	1	
----	----------------	--------	---------------------------	---	--

All original equipment manufacturers names and part numbers are used for identification purposes only, and we are in no way implying that our products are original equipment parts. Prices subject to change without notice.



# Replaces Jacobsen Tri-King 1800G Parts

Cutting Unit  
Reel & Bedknife



Item No	R&R Part No.	OEM Part No.	Description	Qty Req	Order Quantity
11	<b>R458039</b>	458039	Ring - Retaining	1	
13	<b>R364777</b>	364777	Gasket - Motor End	1	
14	<b>R132312</b>	132312	Bracket - Roller RH	1	
15	<b>R132313</b>	132313	Bracket - Roller LH	1	
16	<b>R132028</b>	132028	Bracket - Front H.O.C. RH	1	
17	<b>R132029</b>	132029	Bracket - Front H.O.C. LH	1	
18	<b>R338859</b>	338859	Plate - Backup Roller Bracket	1	
19	<b>R337593</b>	3000983, 337593	Seal	2	
20	<b>R132680</b>	132680	Adjusting - Assy Rear Roller	2	
21	<b>R3000313</b>	3000313, 366833	Nut - Roller Adjusting	4	
22	<b>R131879</b>	131879	Bracket Adj Assy - Rear Roller	2	
23	<b>R3003611</b>	3003611	Handle - Adjusting 3/8-24 Thread	2	
24	<b>R472519</b>	472519	Plug - Adjusting Handle	2	
25	<b>R3004189</b>	3004189	Screw - Adjusting Reel 3/8-24 Thd	2	
26	<b>R3005435</b>	3000924, 3005435	Pin - Quick Release Swivel Hous.	1	
27	<b>R364140</b>	364140	Bushing	2	
<i>Tech Note: Pull Frame:</i>					
28	<b>R445718</b>	445718, 445801	Locknut - 5/8-18 All Metal	2	
29	<b>R366974</b>	366974	Bearing - Rod End	2	
30	<b>R366653</b>	366653	Spacer	2	

All original equipment manufacturers names and part numbers are used for identification purposes only, and we are in no way implying that our products are original equipment parts. Prices subject to change without notice.



# Replaces Jacobsen Tri-King 1800G Parts

*Cutting Unit  
Reel & Bedknife*



Item No	R&R Part No.	OEM Part No.	Description	Qty Req	Order Quantity
31	<b>R101271</b>	445684	Nut - Bedknife	13	
32	<b>R101270</b>	402698, 403757	Screw - Bedknife 3/8-24 x 13/16	13	
33	<b>R500596</b>	500596	Tapered Bearing Set - Cup and Cone	2	
34	<b>R254-72</b>	313456	Cup - Bearing	2	
38	<b>R254-94</b>	313089	Tapered Bearing Cone	2	
39	<b>R364147</b>	364147	Gasket - Cover	1	
40	<b>R3005156</b>	3005156	Sleeve - Wear Hardened	2	

All original equipment manufacturers names and part numbers are used for identification purposes only, and we are in no way implying that our products are original equipment parts. Prices subject to change without notice.