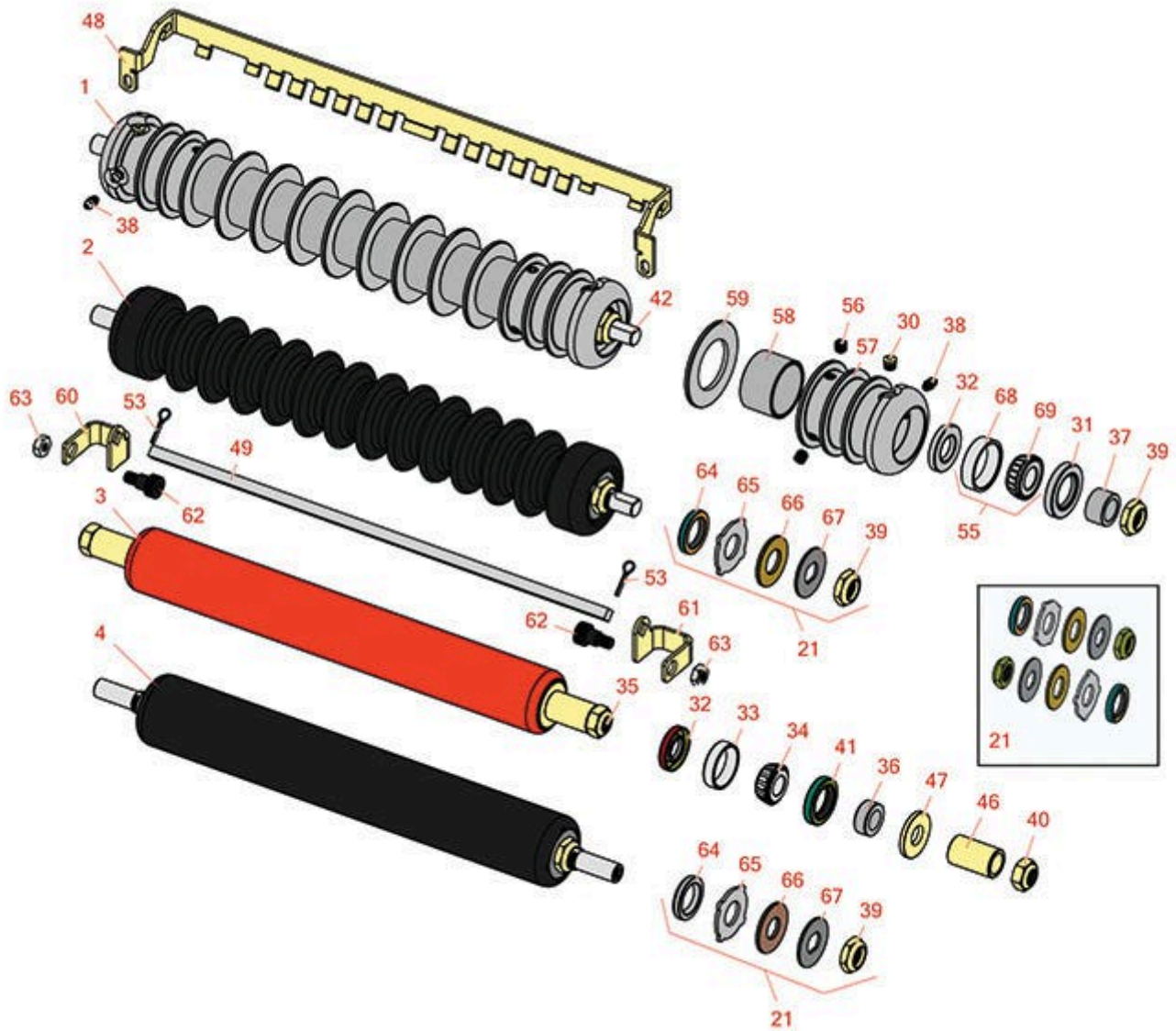




Replaces Jacobsen LF-1880 Parts

Cutting Unit
Rollers



All original equipment manufacturers names and part numbers are used for identification purposes only, and we are in no way implying that our products are original equipment parts. Prices subject to change without notice.



Replaces Jacobsen LF-1880 Parts

Cutting Unit
Rollers



Item No	R&R Part No.	OEM Part No.	Description	Qty Req	Order Quantity
---------	--------------	--------------	-------------	---------	----------------

R&R Front Rollers

1	R101373		Roller - Grooved Repairable Steel	0	
---	----------------	--	-----------------------------------	---	--

Tech Note: Constructed with a through shaft and greasable ball bearings, this roller can be repaired by unscrewing the ends and replacing the series of washers and spacers.:

2	R1013770		Roller - Grooved UHMW Polyethylene	0	
---	-----------------	--	------------------------------------	---	--

Tech Note: Machined from solid UHMW, this low maintenance roller rotates around a 1" solid stainless steel shaft and requires no bearings or grease. Patented groove design and smooth UHMW material prevents build-up of debris.:

R&R Rear Rollers

3	R4115860		Roller - Smooth Tubular Steel	0	
---	-----------------	--	-------------------------------	---	--

Tech Note: Constructed with a through shaft, this heavy duty roller uses greasable tapered bearings for extended life.:

4	R101396		Roller - Smooth UHMW Polyethylene	0	
---	----------------	--	-----------------------------------	---	--

Tech Note: Machined from solid UHMW, this low maintenance roller uses a 1" solid stainless steel shaft and requires no grease. UHMW material prevents build-up of debris.:

Overhaul Kits

21	R101399		Overhaul Kit - UHMW 2 Pc Roller	1	
----	----------------	--	---------------------------------	---	--

Tech Note: Fits all R&R 2-1/2" - 3-1/2" Dia. Black UHMW Plastic Rollers that do not use ball bearings.. Includes 2 ea.: R1503230 Star Washers, R1503470 Seals, R150333 Thrust Washers, R3296-15 Locknuts, R1503471 Bronze Thrust Washers:

Other Parts Available

30	R170714	170714, 471240, 471242	Fitting - Pressure Relief	2	
----	----------------	------------------------------	---------------------------	---	--

31	R253-117	253-117, 3004882	Seal - Outer Triple Lip	2	
----	-----------------	---------------------	-------------------------	---	--

32	R253-152	3001656	Seal - Inner Roller	2	
----	-----------------	---------	---------------------	---	--

32	R338647	338647	Seal - Inner Roller	2	
----	----------------	--------	---------------------	---	--

All original equipment manufacturers names and part numbers are used for identification purposes only, and we are in no way implying that our products are original equipment parts. Prices subject to change without notice.



Replaces Jacobsen LF-1880 Parts

Cutting Unit
Rollers



Item No	R&R Part No.	OEM Part No.	Description	Qty Req	Order Quantity
<i>Tech Note: Fits O.E.M. 2811028 Roller Only:</i>					
33	R254-67	307108, 5000625, 500625	Cup - Bearing	2	
34	R254-68	307109, 5000625, 500625	Tapered Bearing Cone	2	
35	R2811039	2811039	Shaft - Rear Roller	1	
36	R3001762	30001762, 3001762	Sleeve - Wear Hardened	2	
37	R3005156	3005156	Sleeve - Wear Hardened	2	
<i>Tech Note: Fits O.E.M. 2811028 Roller Only:</i>					
37	R5-4038	5-4038	Sleeve - Wear Reel Shaft	2	
<i>Tech Note: Fits R101373 Roller Only:</i>					
38	R302-5	302-5, 471214, 471223, 471226	Fitting - Grease	2	
39	R3296-15	3296-15, 367029, 444742	Locknut - 3/4-16 Nylon Jam	2	
40	R3296-33	444820, 445718, 445801	Locknut - 5/8-18 ESNA Jam	2	
41	R337593	3000983, 337593	Seal	2	
42	R2811030	2811030	Shaft	1	
46	R4115523	4115523	Spacer - Rear Roller	2	
47	R4115557	4115557	Washer	2	
48	R4116934	4116934	Scraper - Grooved Roller	1	

All original equipment manufacturers names and part numbers are used for identification purposes only, and we are in no way implying that our products are original equipment parts. Prices subject to change without notice.



Replaces Jacobsen LF-1880 Parts

Cutting Unit
Rollers



Item No	R&R Part No.	OEM Part No.	Description	Qty Req	Order Quantity
<i>Tech Note: Fits O.E.M.2811028 Roller Only:</i>					
48	R101376		Scraper - Fits R101373 Roller	1	
<i>Tech Note: Fits R101373 Roller Only:</i>					
49	R4118379	4118379	Scraper - Rod	1	
53	R460026	460026	Pin - Cotter 1/8 x 3/4	2	
55	R500534	500534, R500534	Bearing - with Cup	2	
56	R150691		Screw - Set Nyloc 3/8-16 x 3/8	4	
57	R100103		Roller End - Grooved	2	
58	R150676	150676	Spacer - 2-3/4 Dia x 1-1/4 L	0	
59	R150673	150673	Washer - 3 Repairable Roller	11	
60	R4121861	4121861	Bracket - LH Rear Roller Scraper	1	
61	R4121862	4121862	Bracket - RH Rear Roller Scraper	1	
62	R365246	365246	Bolt - Shoulder w/Nyloc Patch	2	
63	R443110	306562, 443110, 444762	Nut - 3/8-16 Hex	2	
64	R1503470		Seal - Inner Wiper	2	
65	R1503230		Washer - Thrust Outer Keyed	2	
66	R1503471		Washer - Thrust SAE660 Bronze	2	
67	R150333		Washer - Flat Keyed Outer SS	2	
68	R254-79	254-79, 4121175	Cup - Bearing	2	

Tech Note: Use R254-79M installation mandrel to properly install race.:

All original equipment manufacturers names and part numbers are used for identification purposes only, and we are in no way implying that our products are original equipment parts. Prices subject to change without notice.



Replaces Jacobsen LF-1880 Parts

*Cutting Unit
Rollers*



Item No	R&R Part No.	OEM Part No.	Description	Qty Req	Order Quantity
69	R254-78	254-78, 385174, 4121174, 4135152	Tapered Bearing Cone	2	

All original equipment manufacturers names and part numbers are used for identification purposes only, and we are in no way implying that our products are original equipment parts. Prices subject to change without notice.