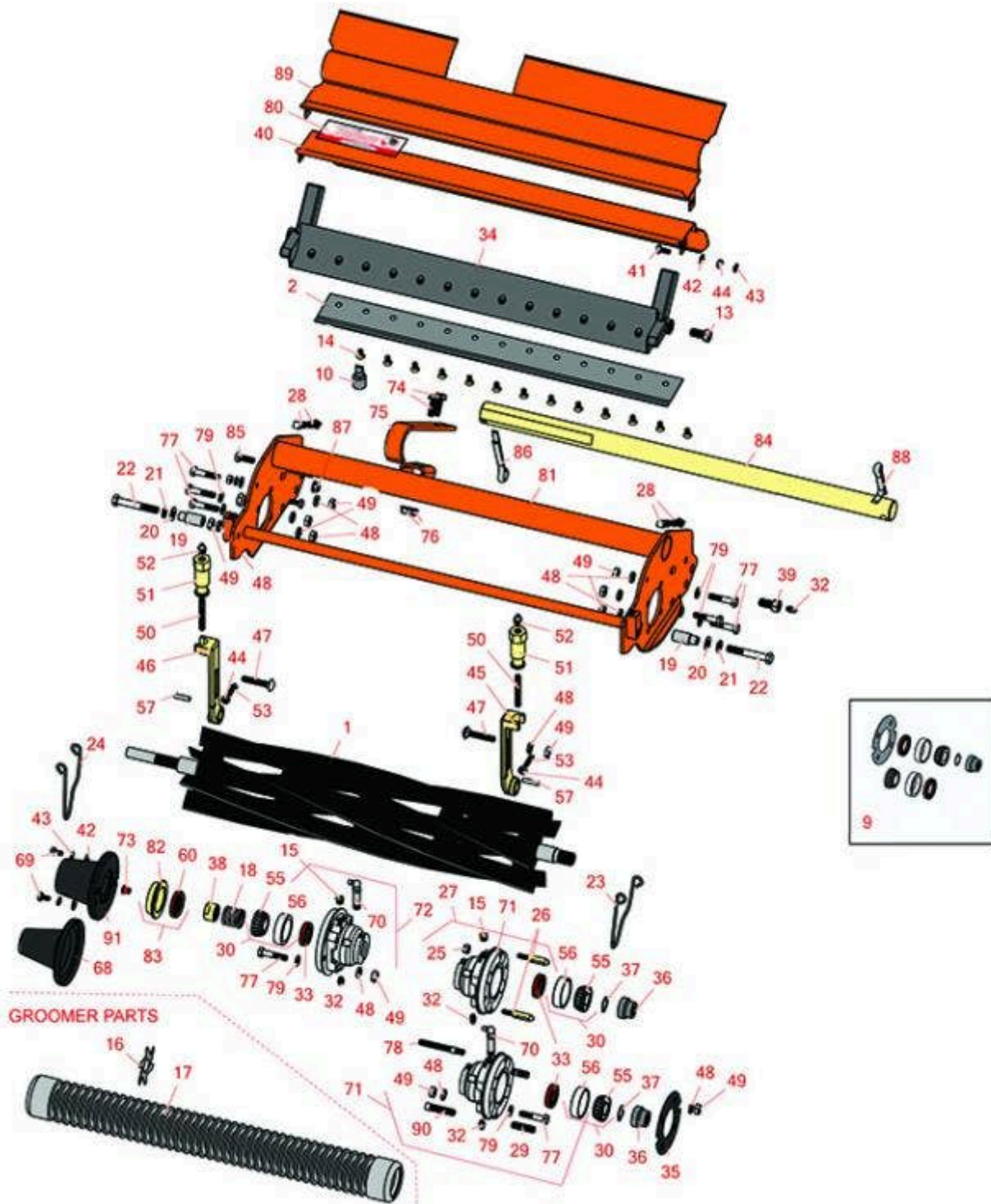




Replaces Jacobsen LF-100 Parts

Cutting Unit
Reel & Bedknife



All original equipment manufacturers names and part numbers are used for identification purposes only, and we are in no way implying that our products are original equipment parts. Prices subject to change without notice.



Replaces Jacobsen LF-100 Parts

Cutting Unit
Reel & Bedknife



Item No	R&R Part No.	OEM Part No.	Description	Qty Req	Order Quantity
---------	--------------	--------------	-------------	---------	----------------

R&R Reels, Lifetime Guaranteed

1	R503319	5001095, 5003053, 503319	Reel - 7 Blade LH	2	
1	R503320	5001096, 5003054, 5003064, 503320	Reel - 7 Blade RH	3	
1	R503321	5001097, 503321	Reel - 5 Blade LH	2	
1	R503322	5001098, 503322	Reel - 5 Blade RH	3	
2	R503460	503257, 503460	Bedknife - 22 in 13 Hole	0	

R&R Razor Tool Steel Bedknives, Lifetime Guaranteed

2	R101523		Bedknife - Razor Tool Steel - 22 High Cut	1	
---	---------	--	---	---	--

Overhaul Kits & Service Tools

9	R100125		Overhaul Kit - Cutting Unit	0	
<i>Tech Note: Includes 2 ea.: R336962 Seals, R254-78 Bearings, R254-79 Cups; 1 ea.:R337677 Seal, R458013 Ring, R364901Gasket, R337370 Coupling:</i>					
10	R101272T		Bedknife Screw Driver Tool	0	
<i>Tech Note: Easily install and remove bed knife screws with the help of a ratchet. Tool manufactured with hardened alloy steel.:</i>					

Other Parts Available

13	R315298	315298	Bolt - Bed Bar	2	
14	R101272	101272, 3009138, 402578, 800813	Screw - Bedknife 1/4-20 x 1/2	13	

All original equipment manufacturers names and part numbers are used for identification purposes only, and we are in no way implying that our products are original equipment parts. Prices subject to change without notice.



Replaces Jacobsen LF-100 Parts

Cutting Unit
Reel & Bedknife



Item No	R&R Part No.	OEM Part No.	Description	Qty Req	Order Quantity
15	R170714	170714, 471240, 471242	Fitting - Pressure Relief	2	
16	R365230	365230	Verti-Cut Blade - 2-1/2 Dia.	40	
17	R390900	390900	Roller - Grooved 2-1/2 x 22	1	
<i>Tech Note: Note: w/ 1/2 Spacing:</i>					
18	R363047	348846, 363047	Spring - Reel	1	
19	R101525	101525	Spacer - Mower Mounting Assy	2	
20	R453011	453011	Washer - Flat 3/8 SAE Y/Zinc	4	
21	R3254-6	3254-6, 446140, 446142	Washer - Lock 3/8	2	
22	R101526	101526	Bolt - Hex HD 3/8-16 x 2-1/2 GR5	2	
23	R2810166	2810166, 3010637	Clip - Spring Motor	1	
24	R2810165	2810165, 2810166, 3010236, 3010636	Clip - Spring Motor	1	
25	R32152-4	32152-4, 444708	Locknut - 1/4-20 All Metal	2	
26	R3010296	3010296	Pin - Motor Mounting	2	
27	R1004786	1004786	Housing - Bearing Quick Clip	1	
<i>Tech Note: Includes: R336962, R302-5, R254-79, R3010296, R32152-4 & R170714:</i>					
28	R412506	412503, 412506	Screw - Bed Bar Adjusting	4	
29	R101327		Stud - Housing	2	

All original equipment manufacturers names and part numbers are used for identification purposes only, and we are in no way implying that our products are original equipment parts. Prices subject to change without notice.



Replaces Jacobsen LF-100 Parts

Cutting Unit
Reel & Bedknife



Item No	R&R Part No.	OEM Part No.	Description	Qty Req	Order Quantity
---------	--------------	--------------	-------------	---------	----------------

Tech Note: Fits R101328 Only:

30	R500534	500534, R500534	Bearing - with Cup	2	
32	R302-5	302-5, 471214, 471223, 471226	Fitting - Grease	2	
33	R336962	336962	Seal	2	
34	R220278	121856, 220278, 5000415	Backing Bar - Cast	1	
34	R2000068	2000068	Bed Bar	1	
35	R364901	364901	Gasket - Reel Motor	1	
36	R4247911	162567, 337370, 4247911	Coupling - Hyd Motor - Glass Filled	1	
36	R3001720	3001720	Coupler - Iron - Hyd Motor	1	
37	R458013	458013	Ring - Retaining	1	
38	R364900	364900	Nut - Reel Tension	1	
39	R345470	1002226, 345470	Bolt - Rear Roller 7/16-20	2	

Tech Note: Incl. Grease Zerk:

40	R390950	126724, 2810043, 390950	Shield - Grass	1	
41	R400106	400106	Bolt - Hex HD 1/4-20 x 5/8	2	
42	R453023	453023	Washer - Flat 1/4	4	
43	R3253-3	3253-3, 446128, 446130	Washer - Lock 1/4	4	

All original equipment manufacturers names and part numbers are used for identification purposes only, and we are in no way implying that our products are original equipment parts. Prices subject to change without notice.



Replaces Jacobsen LF-100 Parts

Cutting Unit
Reel & Bedknife



Item No	R&R Part No.	OEM Part No.	Description	Qty Req	Order Quantity
44	R443102	443102	Nut - 1/4-20 Yellow Zinc	2	
45	R153979	153979, 3008439	Bracket - Front Roller	1	
46	R153980	153980, 3008438	Bracket - Front Roller	1	
47	R441674	441674	Screw - 5/16-18 x 1-3/4 Carriage	2	
48	R446136	446134, 446136	Washer - Lock 5/16 Zinc	2	
49	R443106	443106	Nut - 5/16-18 Y/Zinc Plated	2	
50	R343616	343616, 443102	Stud	2	
51	R365009	3005692, 365009, 365170, 441674	Knob - Adjusting Roller	2	
52	R471219	366852, 471219	Zerk - Grease	2	
53	R352737	352737	Screw - Set 1/4 x 7/8 Sq Head	2	
55	R254-78	254-78, 385174, 4121174, 4135152	Tapered Bearing Cone	2	
56	R254-79	254-79, 4121175	Cup - Bearing	2	
<i>Tech Note: Use R254-79M installation mandrel to properly install race.:</i>					
57	R461256	461256	Pin - 1/4 x 1	2	
60	R337677	315257, 337677	Seal - Oil	1	
68	R338675	338675, 557775	Cover - Shaft End	1	

All original equipment manufacturers names and part numbers are used for identification purposes only, and we are in no way implying that our products are original equipment parts. Prices subject to change without notice.



Replaces Jacobsen LF-100 Parts

Cutting Unit
Reel & Bedknife



Item No	R&R Part No.	OEM Part No.	Description	Qty Req	Order Quantity
69	R400104	400104	Bolt - Hex HD 1/4-20 x 1/2	2	
70	R363896	363896	Fitting - Grease w/Extension	2	
71	R163396	163396	Housing - Reel Brg Motor End	1	
<i>Tech Note: Includes: 4 ea: R361097 Stud; 1 ea: R254-79 Cup, R336962 Seal, R363896 Grease Fitting:</i>					
71	R164146	163679, 164146	Housing - Reel Bearing - Motor End	1	
<i>Tech Note: Housing has no studs, uses 2 bolts. Includes: 1 ea: R170714 Fitting, R254-79 Cup, R302-5 Fitting & R336962 Seal:</i>					
71	R101328		Housing - Bearing Motor End	1	
<i>Tech Note: Includes R302-5, R336962, R170714, R101327 & Cup Portion of R500534. Housing has 2 studs, uses no bolts:</i>					
72	R164144	1000480, 163397, 164144, 2000060	Housing - Reel Bearing	1	
<i>Tech Note: Includes R336962 Seal, R302-5 Zerk, R170714 Relief Fitting & R254-79 Cup:</i>					
73	R352132	352132	Caplug - Reel Shaft End	1	
74	R403751	403751	Bolt - Serrated Washer HD	2	
75	R354928	354928	Stop - Mower	1	
76	R445722	445722	Nut - Serrated Washer	2	
77	R400192	400192	Bolt - Hex HD 5/16-18 x 1-1/2	8	
78	R361097	361097	Stud - Reel Brg Housing	1	
79	R453009	3256-23, 452004, 452006, 452008, 453009	Washer - Flat 5/16 SAE	4	

All original equipment manufacturers names and part numbers are used for identification purposes only, and we are in no way implying that our products are original equipment parts. Prices subject to change without notice.



Replaces Jacobsen LF-100 Parts

Cutting Unit
Reel & Bedknife



Item No	R&R Part No.	OEM Part No.	Description	Qty Req	Order Quantity
80	R354083	354083, 361877, 4127335	Decal - Danger	1	
81	R122685	119245, 122685, 503325	Frame	1	
82	R363814	163892, 363814	Spacer - Seal	1	
83	R163398	163398, 163892	Seal - Spacer Assy	1	
84	R364898	364898	Shaft - Weight Bar	1	
85	R400186	400186	Bolt - Hex HD 5/16-18 x 7/8	1	
86	R460080	460080	Pin - Cotter 3/8 x 3	1	
87	R445781	445781	Nut - 5/16-18 Whiz	1	
88	R460068	460068	Pin - Cotter 1/4 x 2	4	
89	R390940	390940, 67780	Deflector - Rear Discharge	1	
90	R441812	441812	Screw - 3/8-1-1/2 Sq HD Set	2	
91	R2000065	2000065	Weight - Counter	1	

All original equipment manufacturers names and part numbers are used for identification purposes only, and we are in no way implying that our products are original equipment parts. Prices subject to change without notice.