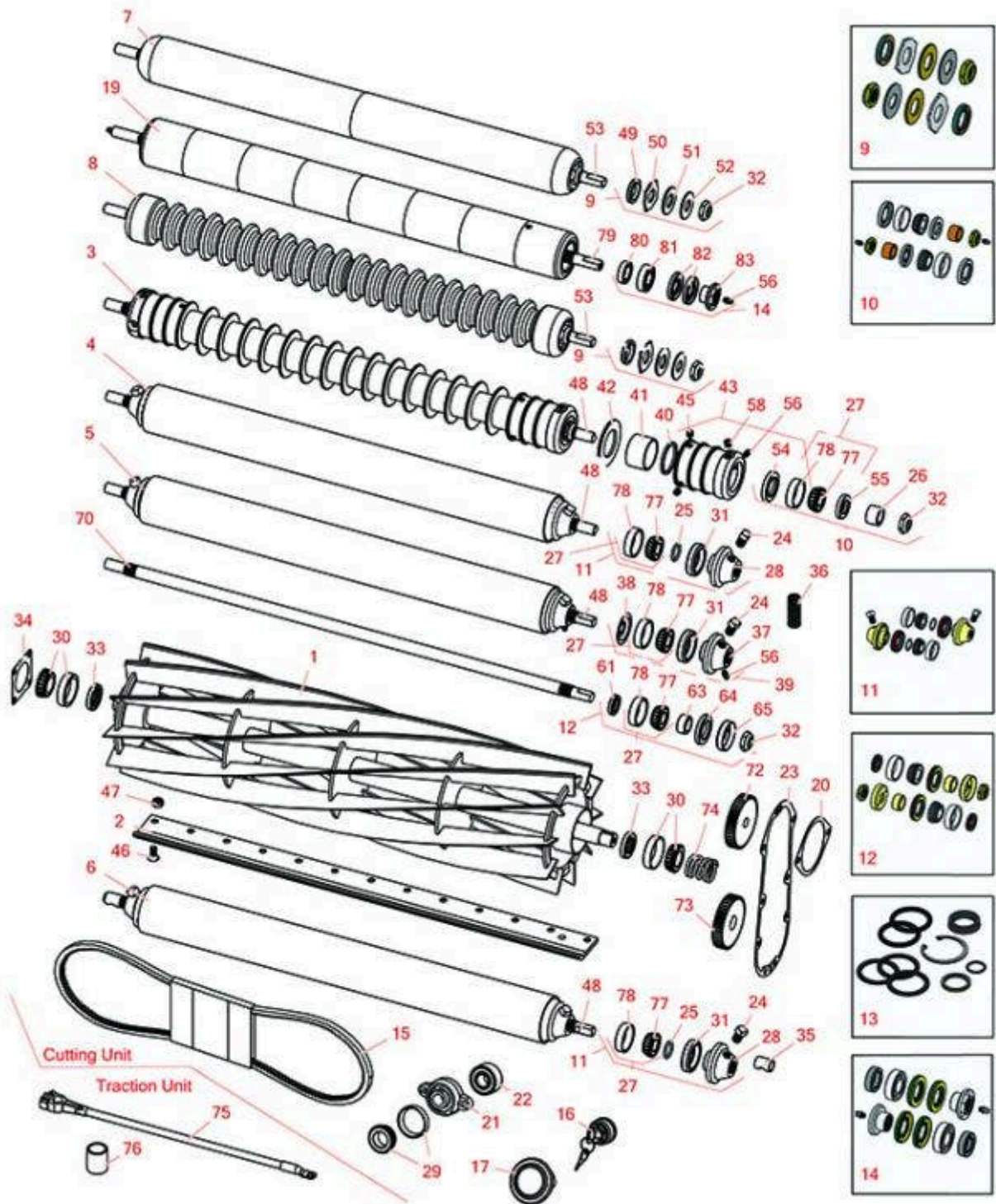




# Replaces Jacobsen HF-5 Parts

Cutting Unit  
Reel, Bedknife & Roller



All original equipment manufacturers names and part numbers are used for identification purposes only, and we are in no way implying that our products are original equipment parts. Prices subject to change without notice.



# Replaces Jacobsen HF-5 Parts

Cutting Unit  
Reel, Bedknife & Roller



Item No	R&R Part No.	OEM Part No.	Description	Qty Req	Order Quantity
---------	--------------	--------------	-------------	---------	----------------

### R&R Reels, Lifetime Guaranteed

1	<b>R502874</b>	502874	Reel - 6 Blade RH	1	
1	<b>R502875</b>	502875	Reel - 6 Blade LH	1	
1	<b>R502876</b>	502876	Reel - 10 Blade RH	1	
1	<b>R502877</b>	502877	Reel - 10 Blade LH	1	
1	<b>R503041</b>	503041	Reel - 10 Blade RH 86-ON	1	
1	<b>R503042</b>	503042	Reel - 10 Blade LH 86-ON	1	
1	<b>R503043</b>	503043	Reel - 6 Blade RH 86-ON	1	
1	<b>R503044</b>	503044	Reel - 6 Blade LH 86-ON	1	

### R&R Bedknives, Lifetime Guaranteed

2	<b>R503550</b>	331692, 503363, 503550	Bedknife - 30 in (13 Hole)	1	
---	----------------	------------------------------	----------------------------	---	--

### R&R Rollers

3	<b>R113897RG</b>	123267	Roller - Grooved Repairable Steel	1	
<i>Tech Note: Constructed with a through shaft and greasable ball bearings, this roller can be repaired by unscrewing the ends and replacing the series of washers and spacers.:</i>					
3	<b>R700513</b>		Roller - Grooved	1	
4	<b>R700512</b>		Roller - Smooth Tubular Steel Oil Filled	1	
4	<b>R113897</b>	113897, 132506	Roller - Smooth Tubular Steel Oil Filled	1	
<i>Tech Note: Constructed with a through shaft, this oil filled heavy-duty roller uses tapered bearings for extended life.:</i>					
5	<b>R700500</b>	700500	Roller - Smooth Tubular Steel Regreasable	1	

All original equipment manufacturers names and part numbers are used for identification purposes only, and we are in no way implying that our products are original equipment parts. Prices subject to change without notice.



# Replaces Jacobsen HF-5 Parts

Cutting Unit  
Reel, Bedknife & Roller



Item No	R&R Part No.	OEM Part No.	Description	Qty Req	Order Quantity
---------	--------------	--------------	-------------	---------	----------------

*Tech Note: Constructed with a through shaft, this heavy duty roller uses greasable tapered bearings for extended life.:*

6	<b>R700400</b>		Roller - Front w/ Bushing	1	
---	----------------	--	---------------------------	---	--

7	<b>R1013902</b>		Roller - Smooth UHMW Polyethylene	1	
---	-----------------	--	-----------------------------------	---	--

*Tech Note: Machined from solid UHMW, this low maintenance roller uses a 1" solid stainless steel shaft and requires no grease. UHMW material prevents build-up of debris.:*

8	<b>R1013800</b>		Roller - Grooved UHMW Polyethylene	1	
---	-----------------	--	------------------------------------	---	--

*Tech Note: Machined from solid UHMW, this low maintenance roller rotates around a 1" solid stainless steel shaft and requires no bearings or grease. Patented groove design and smooth UHMW material prevent build-up of debris. (2006 & Up):*

19	<b>R1013910</b>		Roller - Fusion Smooth UHMW Polyethylene	1	
----	-----------------	--	--	---	--

*Tech Note: Machined from solid UHMW plastic that prevents build-up of debris. This roller turns on precision stainless ball bearings.:*

## Overhaul Kits

9	<b>R101399</b>		Overhaul Kit - UHMW 2 Pc Roller	1	
---	----------------	--	---------------------------------	---	--

*Tech Note: Fits all R&R 2-1/2" - 3-1/2" Dia. Black UHMW Plastic Rollers that do not use ball bearings.. Includes 2 ea.: R1503230 Star Washers, R1503470 Seals, R150333 Thrust Washers, R3296-15 Locknuts, R1503471 Bronze Thrust Washers:*

10	<b>R100135</b>		Overhaul Kit - Roller	0	
----	----------------	--	-----------------------	---	--

*Tech Note: Includes 2 ea.:R302-5 Grease Fittings, R253-122 Seals, R253-117 Seals, R150674 Wear Sleeves, R254-78 Bearings, R254-79 Bearing Cups, & R3296-15 Locknuts:*

11	<b>R100140</b>		Overhaul Kit - Oil Filled Roller	0	
----	----------------	--	----------------------------------	---	--

*Tech Note: Includes 2 ea.: R500574 Roller Collar, R500534 Bearing Cup & Cone, R459007 O-ring, R328062 Seal, R412063 Screw:*

12	<b>R100133</b>		Overhaul Kit - Roller	1	
----	----------------	--	-----------------------	---	--

*Tech Note: Includes: 2ea: R254-78 Bearings, R254-79 Bearing Cups, R3296-15 Locknuts, R338645 Cup Deflectors, R338646 Seals, R338647 Seals, & R366168 Wear Sleeves:*

All original equipment manufacturers names and part numbers are used for identification purposes only, and we are in no way implying that our products are original equipment parts. Prices subject to change without notice.



# Replaces Jacobsen HF-5 Parts

Cutting Unit  
Reel, Bedknife & Roller



Item No	R&R Part No.	OEM Part No.	Description	Qty Req	Order Quantity
---------	--------------	--------------	-------------	---------	----------------

13	<b>R500798</b>	500798	Seal Kit - Fits R130210 Cylinder	1	
----	----------------	--------	----------------------------------	---	--

14	<b>R114-5430</b>	114-5430	Overhaul Kit - Roller	1	
----	------------------	----------	-----------------------	---	--

*Tech Note: Includes 4 ea.: R112-7494 Seals; 2 ea.: R302-5 Grease Zerks, R114-3717 Seals, R112-5290 Bearings & R114-3745 Locknuts:*

## Belts

15	<b>R101420</b>	337854	Belt - Pump	1	
----	----------------	--------	-------------	---	--

## Gauges and Controls

17	<b>R162723</b>	162723, 358825	Meter - Hour	1	
----	----------------	-------------------	--------------	---	--

16	<b>R12-8140</b>	129846	Switch - Key 5 Lead	1	
----	-----------------	--------	---------------------	---	--

## Other Parts Available

20	<b>R359960</b>	359960	Gasket - Hyd Motor	1	
----	----------------	--------	--------------------	---	--

21	<b>R361441</b>	361441	Bearing - Flange	2	
----	----------------	--------	------------------	---	--

22	<b>R361443</b>	361443	Bearing - Idler Belt	1	
----	----------------	--------	----------------------	---	--

23	<b>R390379</b>	390379	Gasket - Cover	1	
----	----------------	--------	----------------	---	--

24	<b>R412063</b>	412063	Screw - Sq. HD. Set	2	
----	----------------	--------	---------------------	---	--

25	<b>R459007</b>	459007	O-Ring - Roller	2	
----	----------------	--------	-----------------	---	--

26	<b>R150674</b>	150674	Sleeve - Wear 3/4 Plated	2	
----	----------------	--------	--------------------------	---	--

27	<b>R500534</b>	500534, R500534	Bearing - with Cup	2	
----	----------------	--------------------	--------------------	---	--

28	<b>R500574</b>	500574	Collar - Roller	2	
----	----------------	--------	-----------------	---	--

29	<b>R500596</b>	500596	Tapered Bearing Set - Cup and Cone	4	
----	----------------	--------	------------------------------------	---	--

30	<b>R500711</b>	500711	Bearing - with Cup	2	
----	----------------	--------	--------------------	---	--

31	<b>R328062</b>	328062	Seal - Roller	2	
----	----------------	--------	---------------	---	--

All original equipment manufacturers names and part numbers are used for identification purposes only, and we are in no way implying that our products are original equipment parts. Prices subject to change without notice.



# Replaces Jacobsen HF-5 Parts

Cutting Unit  
Reel, Bedknife & Roller



Item No	R&R Part No.	OEM Part No.	Description	Qty Req	Order Quantity
32	<b>R3296-15</b>	3296-15, 367029, 444742	Locknut - 3/4-16 Nylon Jam	1	
33	<b>R337593</b>	3000983, 337593	Seal	2	
34	<b>R350698</b>	350698	Gasket - Bearing Housing	1	
35	<b>R700401</b>		Bushing - Front Roller	1	
36	<b>R351417</b>	351417	Spring - Reel to Bedknife	1	
37	<b>R700501</b>	700501	Roller End - Regreasable	2	
38	<b>R700502</b>	700502	Retainer - Grease	2	
39	<b>R700505</b>		Conversion Kit - Roller	1	
<i>Tech Note: Includes: 2 each: R254-78 Bearing Cones, R254-79 Bearing Cups, R328062 Seals, R412063 Square Head Set Screws, R700501 Roller Ends &amp; R700502 Grease Retainers.:</i>					
40	<b>R150676A</b>		Spacer - 1/8	2	
41	<b>R150671</b>		Spacer - 2 3/4 / 3 Rollers 13/16 L	0	
41	<b>R150676</b>	150676	Spacer - 2-3/4 Dia x 1-1/4 L	10	
42	<b>R150673</b>	150673	Washer - 3 Repairable Roller	11	
43	<b>R150675</b>		Roller - End - 3 Threaded	2	
45	<b>R150691</b>		Screw - Set Nyloc 3/8-16 x 3/8	4	
46	<b>R101270</b>	402698, 403757	Screw - Bedknife 3/8-24 x 13/16	13	
47	<b>R101271</b>	445684	Nut - Bedknife	13	
48	<b>R328058</b>	328058	Shaft - Roller	1	
48	<b>R700514</b>		Shaft - Roller - 35-1/16	1	
49	<b>R1503470</b>		Seal - Inner Wiper	2	

All original equipment manufacturers names and part numbers are used for identification purposes only, and we are in no way implying that our products are original equipment parts. Prices subject to change without notice.



# Replaces Jacobsen HF-5 Parts

*Cutting Unit  
Reel, Bedknife & Roller*



Item No	R&R Part No.	OEM Part No.	Description	Qty Req	Order Quantity
50	<b>R1503230</b>		Washer - Thrust Outer Keyed	2	
51	<b>R1503471</b>		Washer - Thrust SAE660 Bronze	2	
52	<b>R150333</b>		Washer - Flat Keyed Outer SS	2	
53	<b>R1013831</b>		Shaft - 1in Stainless Steel	1	
54	<b>R253-117</b>	253-117, 3004882	Seal - Outer Triple Lip	2	
55	<b>R253-122</b>		Seal	2	
56	<b>R302-5</b>	302-5, 471214, 471223, 471226	Fitting - Grease	2	
58	<b>R170714</b>	170714, 471240, 471242	Fitting - Pressure Relief	2	

## **Replaces Jacobsen 132506 Roller Parts**

61	<b>R338647</b>	338647	Seal - Inner Roller	2	
63	<b>R366168</b>	336168, 366168	Sleeve - Wear Hardened	2	
64	<b>R338646</b>	338646	Seal - Outer Roller	2	
65	<b>R338645</b>	338645	Deflector - Cup	2	
70	<b>R339051</b>	339051	Shaft - Roller - Fits OEM Rollers	1	
72	<b>R162693</b>	162693	Gear - Idler 45 Teeth	1	
73	<b>R337390</b>	337390	Gear - Reel	1	
74	<b>R350671</b>	350671	Spring - Reel	1	
75	<b>R153244</b>	153244	Cable - Battery Negative	1	
76	<b>R315296</b>	315296	Bushing - Pivot Housing	2	

All original equipment manufacturers names and part numbers are used for identification purposes only, and we are in no way implying that our products are original equipment parts. Prices subject to change without notice.



# Replaces Jacobsen HF-5 Parts

Cutting Unit

Reel, Bedknife & Roller



Item No	R&R Part No.	OEM Part No.	Description	Qty Req	Order Quantity
77	<b>R254-78</b>	254-78, 385174, 4121174, 4135152	Tapered Bearing Cone	2	
78	<b>R254-79</b>	254-79, 4121175	Cup - Bearing	2	
<i>Tech Note: Use R254-79M installation mandrel to properly install race.:</i>					
79	<b>R1013911</b>		Shaft	1	
80	<b>R114-3717</b>		Seal	2	
81	<b>R112-5290</b>		Bearing - Stainless	2	
82	<b>R112-7494</b>		Seal	4	
83	<b>R114-3745</b>		Locknut - Bearing - Stainless	2	

All original equipment manufacturers names and part numbers are used for identification purposes only, and we are in no way implying that our products are original equipment parts. Prices subject to change without notice.