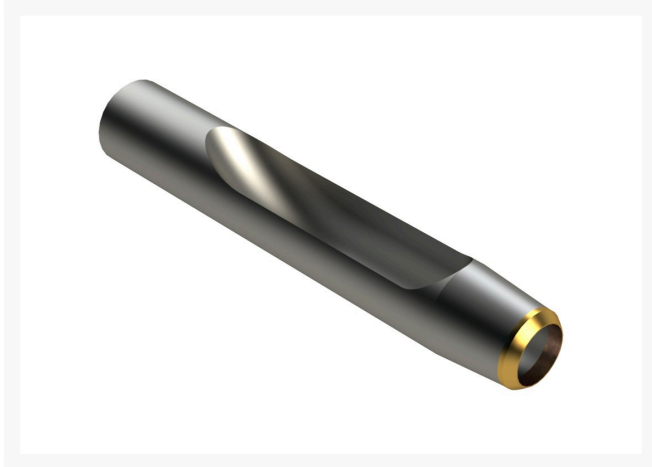




Alloy Machined Side-Eject Tine with Carbide Tip - .750MT x 4.500L x .645OD

R201696



Details

Manufactured from special high carbon alloy tubular steel with a precision machined slot in the side wall to allow for more efficient core removal in heavy soils. R&R's unique method of machining maintains the maximum side wall height for strength to avoid bending. These tines are through hardened to RC45-48 to create a much tougher and more wear resistant tine. A carbide tip is then added for even longer life. The advantage of using carbide tipped tines is the ability to maintain your maximum aerating depth consistently over the life of the tines.

Specifications

| | |
|----------------------------------|--|
| Manufacturer | R&R Products |
| A - Tine Type | Alloy Machined Side-Eject with Carbide Tip |
| B - Tine Mounting Dia. | .750 in (19mm) |
| C - Tine Length | 4.5 in (114mm) |
| Carbide Tip | Carbide Tip |
| D - Tine Tip Outside (Hole) Dia. | .645 in (16.4mm) |
| E - Tine Tip Inside (Core) Dia. | .500 in (12.7mm) |
| F - Tine Wall Thickness | .062 in (1.6mm) |

Fits Models

Jacobsen GA-24
Ryan GA30
Ryan Greensaire II
Toro Greens Aerator
Toro ProCore 1298
Toro ProCore 440
Toro ProCore 648
Toro ProCore 660
Toro ProCore 864

Gritmaster

309 Percy Osborn Road Morningside, 4001
0313035785

<https://gritmaster.rrproducts.com/>



**Alloy Machined Side-Eject Tine with
Carbide Tip - .750MT x 4.500L x .645OD**
R201696



Toro ProCore 880
Toro ProCore 648s

Gritmaster

309 Percy Osborn Road Morningside, 4001
0313035785

<https://gritmaster.rrproducts.com/>