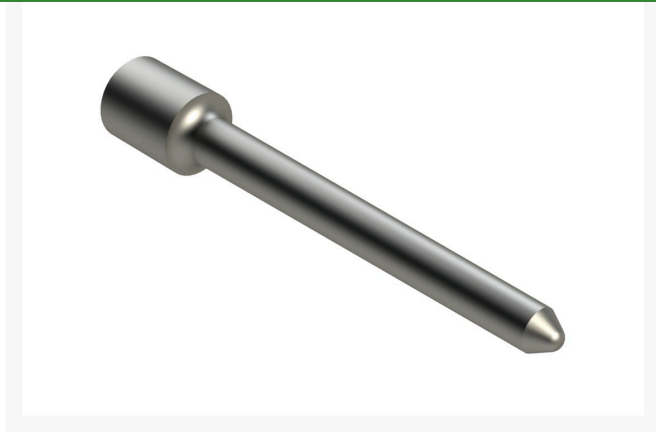




# Alloy Solid Tine - .875MT x 5.500L x .4375OD R201409



## Details

Alloy Solid Tines aerate without the work of cleaning up the mess of cores and debris left behind with conventional core aerating. R&R Solid Tines are manufactured from a special high-carbon steel bar and heat treated to RC45-48 in our own heat treatment facility. They are available in all standard sizes but are especially popular in the smaller diameters for aerating in the summer months to relieve the stress on greens by allowing water, air and nutrients to easily flow into the root zone. With the combination of small holes and no cores, play can be resumed immediately.

## Replaces

Cushman 201409

## Specifications

Manufacturer	R&R Products
A - Tine Type	Alloy Solid
B - Tine Mounting Dia.	.875 in (22mm)
C - Tine Length	5.500 in (140mm)
D - Tine Tip Outside (Hole) Dia.	.4375 in (11.1mm)

## Fits Models

Cushman GA60  
John Deere Aercore 1000  
John Deere Aercore 1500  
John Deere Aercore 2000  
John Deere Aercore 800  
Ryan GA30  
Ryan GA60

## Gritmaster

309 Percy Osborn Road Morningside, 4001  
0313035785

<https://gritmaster.rrproducts.com/>