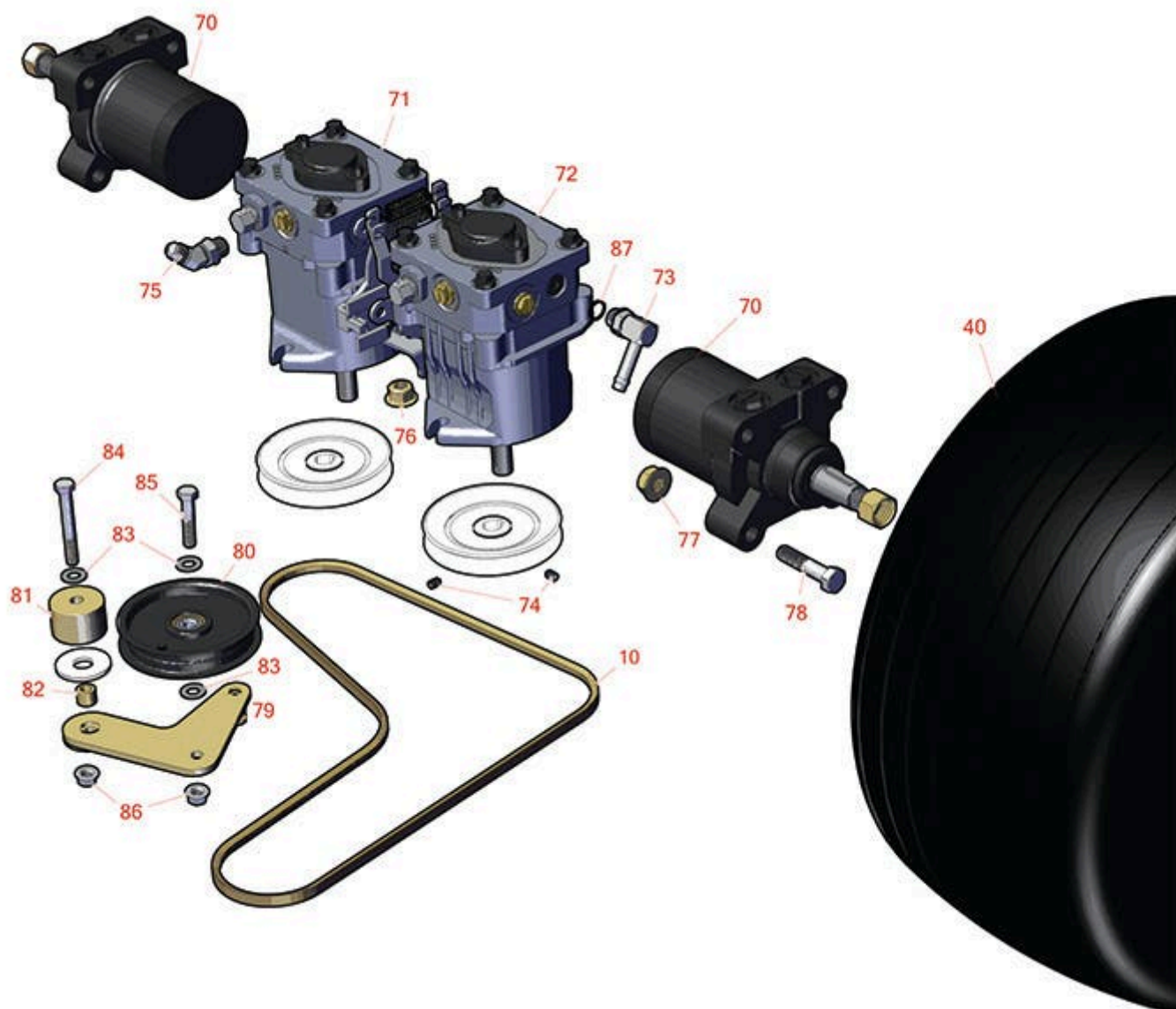




# Replaces Toro GrandStand Mower Parts

Mower with 40in Deck - Model 74536

Traction Drive



All original equipment manufacturers names and part numbers are used for identification purposes only, and we are in no way implying that our products are original equipment parts. Prices subject to change without notice.



# Replaces Toro GrandStand Mower Parts

Mower with 40in Deck - Model 74536

Traction Drive



Item No	R&R Part No.	OEM Part No.	Description	Qty Req	Order Quantity
---------	--------------	--------------	-------------	---------	----------------

## Belts

10	<b>R119-0174</b>	119-0174	Belt- V - Traction Drive	1	
----	------------------	----------	--------------------------	---	--

## Tires and Wheels

40	<b>TIRES</b>		<a href="#">Click Here to View Complete Tire Selection</a>	2	
----	--------------	--	--	---	--

40	<b>RTMT78245</b>	139-5847, 139-5848, 139-5849, 140-1886, 140-1888, 140-4271, 140-4272	Michelin X Tweel Turf - 18x8.5N10 (4x4in Mount ) 705 lb Max Load	2	
----	------------------	--	--	---	--

*Detail Description: Michelin X Tweel Turf airless radial tires for golf carts and utility carts require no air pressure, so there is no need for spare tires or repair kits. Their unique spoke design helps dampen the ride for enhanced rider comfort when driving over gravel, uneven pavement, and bumps. And, they are designed to provide outstanding lateral stiffness for improved side-hill stability, excellent traction and a long wear life up to 2X longer than a pneumatic golf cart/utility cart tire.:*

## Other Parts Available

70	<b>R104-1171</b>	104-1171	Hydraulic Motor - Wheel	2	
71	<b>R119-0177</b>	119-0177	Hydraulic Pump Assy	1	
72	<b>R119-0176</b>	119-0176	Hydraulic Pump Assy	1	
73	<b>R100-4887</b>	100-4887	Fitting-Barb	2	
74	<b>R3241-5</b>	3241-5, 3245-7, 352-103, Jul-93	Screw - Set 1/4-20 x 3/8	4	
75	<b>R353-212</b>	30-6430, 353-212, 353-378	Hydraulic Fitting - 45 Deg	3	
76	<b>R114-8417</b>	114-8417	Locknut - 7/16-14 Nylon Hx Fl	4	

All original equipment manufacturers names and part numbers are used for identification purposes only, and we are in no way implying that our products are original equipment parts. Prices subject to change without notice.



# Replaces Toro GrandStand Mower Parts

Mower with 40in Deck - Model 74536

Traction Drive



Item No	R&R Part No.	OEM Part No.	Description	Qty Req	Order Quantity
77	R32128-23	32128-23, 3218-23, 99-5107	Nut - Lock Hex Flanged 1/2-13	8	
78	R325-10	01-150-0620, 01-178-0820, 20-91-AGD, 3226-6, 325-10	Bolt	8	
79	R117-7684	117-7684	Idler Plate	1	
80	R93-1622	93-1622	Idler Pulley - Flat 4 in Dia with .375 Bore	1	
81	R116-7599	116-7599	Hub - Idler	1	
82	R1-413088	1-413088	Bushing - Lift Lever	1	
83	R453011	01-166-0100, 01-166-0120, 01-166-0270, 01-166-0500, 01-166-0600, 01-166-0620, 132-4593, 2356-3, 237-12, 24-10-AD, 24-11-AD, 24-11-BD, 24-12-AD, 24-12-BD, 30-9310, 32-8190, 3256-24, 3256-3, 3256-36, 3256-4, 453011, 47-9950, 48-9220, 513458, 7-0052	Washer - Flat 3/8 SAE Y/Zinc	3	

All original equipment manufacturers names and part numbers are used for identification purposes only, and we are in no way implying that our products are original equipment parts. Prices subject to change without notice.



## Replaces Toro GrandStand Mower Parts

Mower with 40in Deck - Model 74536

Traction Drive



Item No	R&R Part No.	OEM Part No.	Description	Qty Req	Order Quantity
84	R323-13	01-150-1020, 01-178-0622, 20-54-AD, 20-54-AGD, 323-13, 513366	Bolt - Hex HD 3/8-16 x 2-3/4 GR5	1	
85	R323-9	01-150-0190, 01-150-1540, 01-178-0614, 107229, 20-50-AD, 20-50-AGD, 30-9430, 32105-4, 3224-5, 323-9, 513363, 513364, 5377, 908037P	Bolt - Hex HD 3/8-16 x 1-3/4	1	
86	R104-8301	104-8301, 104-9301, 109-6658, 133-7570	Locknut - 3/8-16 Nylon Flanged	2	
87	R237-42	237-42, 31-4160	O-Ring	2	

All original equipment manufacturers names and part numbers are used for identification purposes only, and we are in no way implying that our products are original equipment parts. Prices subject to change without notice.