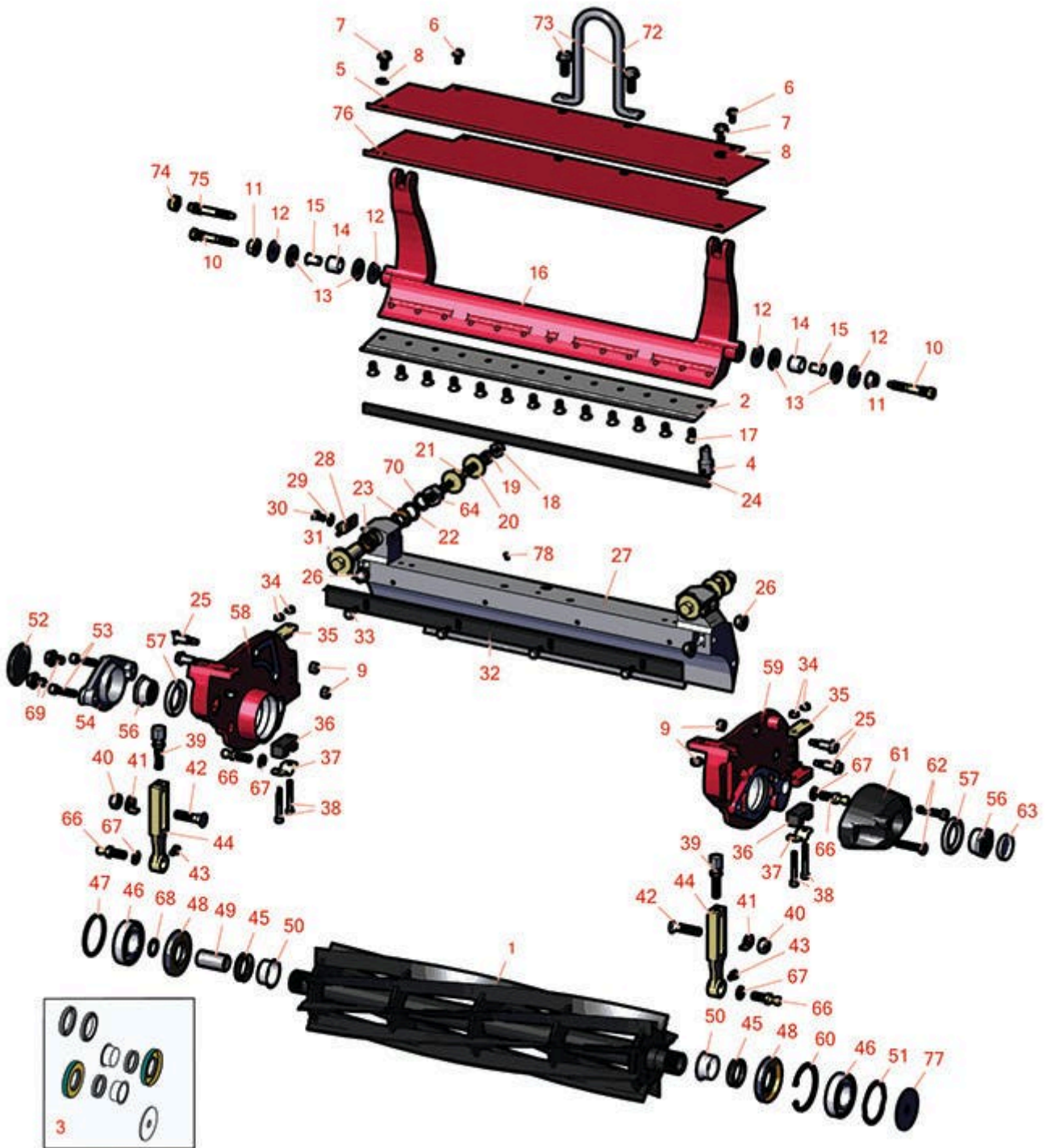




Replaces Toro Greensmaster 3050 Parts

DPA Cutting Unit - Models 04610, 04611 & 04616
Reel & Bedknife



All original equipment manufacturers names and part numbers are used for identification purposes only, and we are in no way implying that our products are original equipment parts. Prices subject to change without notice.



Replaces Toro Greensmaster 3050 Parts

DPA Cutting Unit - Models 04610, 04611 & 04616
Reel & Bedknife



| Item No | R&R Part No. | OEM Part No. | Description | Qty Req | Order Quantity |
|---------|--------------|--------------|-------------|---------|----------------|
|---------|--------------|--------------|-------------|---------|----------------|

R&R Reels, Lifetime Guaranteed

| | | | | |
|---|------------------|----------|----------------|---|
| 1 | R105-5793 | 105-5793 | Reel - 8 Blade | 1 |
|---|------------------|----------|----------------|---|

Detail Description: R&R Reel blades are manufactured from high carbon-boron alloy steel and then hardened to RC46-49 to match the temper of our bedknives and original equipment bedknives. All R&R Reels are cylindrically ground on bearing surfaces and then relief ground. Reels are then precision computer balanced for extended bearing and reel life. R&R Products Reels are guaranteed against defects in material and workmanship for the life of the reel under normal use.:

| | | | | |
|---|------------------|----------|-----------------|---|
| 1 | R105-5792 | 105-5792 | Reel - 11 Blade | 1 |
|---|------------------|----------|-----------------|---|

Detail Description: R&R Reel blades are manufactured from high carbon-boron alloy steel and then hardened to RC46-49 to match the temper of our bedknives and original equipment bedknives. All R&R Reels are cylindrically ground on bearing surfaces and then relief ground. Reels are then precision computer balanced for extended bearing and reel life. R&R Products Reels are guaranteed against defects in material and workmanship for the life of the reel under normal use.:

| | | | | |
|---|------------------|--|--------------------------|---|
| 1 | R127-2194 | | Reel - 11 Blade Low Drag | 1 |
|---|------------------|--|--------------------------|---|

Detail Description: R&R Reel blades are manufactured from high carbon-boron alloy steel and then hardened to RC46-49 to match the temper of our bedknives and original equipment bedknives. All R&R Reels are cylindrically ground on bearing surfaces and then relief ground. Reels are then precision computer balanced for extended bearing and reel life. R&R Products Reels are guaranteed against defects in material and workmanship for the life of the reel under normal use.:

| | | | | |
|---|----------------|-----------|---|---|
| 1 | R150748 | R115-5370 | Reel - 14 Blade Razor Series Low Drag 21 | 1 |
|---|----------------|-----------|---|---|

Detail Description: R&R Razor Reels are manufactured from a special high alloy steel and then hardened to RC48-51 to match the temper of our Razor bedknives and original equipment premium series bedknives. All R&R Reels are cylindrically ground on bearing surfaces, relief ground and precision computer balanced for extended bearing and reel life. R&R Products Reels are guaranteed against defects in material and workmanship for the life of the reel under normal use. You can expect up to double the life from Razor reels over standard reels.:

| | | | | |
|---|------------------|----------|-----------------|---|
| 1 | R115-5370 | 115-5370 | Reel - 14 Blade | 1 |
|---|------------------|----------|-----------------|---|

All original equipment manufacturers names and part numbers are used for identification purposes only, and we are in no way implying that our products are original equipment parts. Prices subject to change without notice.



Replaces Toro Greensmaster 3050 Parts

DPA Cutting Unit - Models 04610, 04611 & 04616
Reel & Bedknife



| Item No | R&R Part No. | OEM Part No. | Description | Qty Req | Order Quantity |
|---------|--------------|--------------|-------------|---------|----------------|
|---------|--------------|--------------|-------------|---------|----------------|

Detail Description: R&R Reel blades are manufactured from high carbon-boron alloy steel and then hardened to RC46-49 to match the temper of our bedknives and original equipment bedknives. All R&R Reels are cylindrically ground on bearing surfaces and then relief ground. Reels are then precision computer balanced for extended bearing and reel life. R&R Products Reels are guaranteed against defects in material and workmanship for the life of the reel under normal use.:

R&R Bedknives, Lifetime Guaranteed

| | | | | | |
|---|----------------|---------------------------------|--|---|--|
| 2 | R150466 | 63-8600, 64-6393, 94-6393 | Bedknife - Super Thick .312 - 1.00 HOC | 1 | |
|---|----------------|---------------------------------|--|---|--|

Detail Description: R&R Bedknives are manufactured from high carbon-boron alloy steel and then hardened to RC46-49 to match the temper of our reel blades and original equipment reels. Bedknives are surface ground on the top and front edge and straightened three times before being packaged with oil for rust prevention. All R&R Bedknives now have an increased front edge grind for added life. All R&R Bedknives are guaranteed against defects in material and workmanship under normal use for the life of the part.:

| | | | | | |
|---|-----------------|---------------------|-------------------------------------|---|--|
| 2 | R94-6392 | 62-2500, 94-6392 | Bedknife - High Cut .312 - 1.00 HOC | 1 | |
|---|-----------------|---------------------|-------------------------------------|---|--|

Detail Description: R&R Bedknives are manufactured from high carbon-boron alloy steel and then hardened to RC46-49 to match the temper of our reel blades and original equipment reels. Bedknives are surface ground on the top and front edge and straightened three times before being packaged with oil for rust prevention. All R&R Bedknives now have an increased front edge grind for added life. All R&R Bedknives are guaranteed against defects in material and workmanship under normal use for the life of the part.:

| | | | | | |
|---|-----------------|---------------------------------|------------------------------------|---|--|
| 2 | R93-4264 | 57-4960, 63-8470, 93-4264 | Bedknife - Low Cut .187 - 1.00 HOC | 1 | |
|---|-----------------|---------------------------------|------------------------------------|---|--|

Detail Description: R&R Bedknives are manufactured from high carbon-boron alloy steel and then hardened to RC46-49 to match the temper of our reel blades and original equipment reels. Bedknives are surface ground on the top and front edge and straightened three times before being packaged with oil for rust prevention. All R&R Bedknives now have an increased front edge grind for added life. All R&R Bedknives are guaranteed against defects in material and workmanship under normal use for the life of the part.:

| | | | | | |
|---|-----------------|---------------------------------|--------------------------------------|---|--|
| 2 | R93-4262 | 65-8250, 93-4262, 93-4263 | Bedknife - Micro Cut .062 - .187 HOC | 1 | |
|---|-----------------|---------------------------------|--------------------------------------|---|--|

All original equipment manufacturers names and part numbers are used for identification purposes only, and we are in no way implying that our products are original equipment parts. Prices subject to change without notice.



Replaces Toro Greensmaster 3050 Parts

DPA Cutting Unit - Models 04610, 04611 & 04616
Reel & Bedknife



| Item No | R&R Part No. | OEM Part No. | Description | Qty Req | Order Quantity |
|---------|--------------|--------------|-------------|---------|----------------|
|---------|--------------|--------------|-------------|---------|----------------|

Detail Description: R&R Bedknives are manufactured from high carbon-boron alloy steel and then hardened to RC46-49 to match the temper of our reel blades and original equipment reels. Bedknives are surface ground on the top and front edge and straightened three times before being packaged with oil for rust prevention. All R&R Bedknives now have an increased front edge grind for added life. All R&R Bedknives are guaranteed against defects in material and workmanship under normal use for the life of the part.:

| | | | | | |
|---|------------------|-----------------------|---|---|--|
| 2 | R108-4302 | 108-4301, 108-4302 | Bedknife - Tournament Cut Extended .125 - .500 HOC | 1 | |
|---|------------------|-----------------------|---|---|--|

Detail Description: R&R Bedknives are manufactured from high carbon-boron alloy steel and then hardened to RC46-49 to match the temper of our reel blades and original equipment reels. Bedknives are surface ground on the top and front edge and straightened three times before being packaged with oil for rust prevention. All R&R Bedknives now have an increased front edge grind for added life. All R&R Bedknives are guaranteed against defects in material and workmanship under normal use for the life of the part.:

| | | | | | |
|---|------------------|-----------------------|--|---|--|
| 2 | R108-4303 | 104-7720, 108-4303 | Bedknife - Micro Cut Extended .062 - .187 HOC | 1 | |
|---|------------------|-----------------------|--|---|--|

Detail Description: R&R Bedknives are manufactured from high carbon-boron alloy steel and then hardened to RC46-49 to match the temper of our reel blades and original equipment reels. Bedknives are surface ground on the top and front edge and straightened three times before being packaged with oil for rust prevention. All R&R Bedknives now have an increased front edge grind for added life. All R&R Bedknives are guaranteed against defects in material and workmanship under normal use for the life of the part.:

| | | | | | |
|---|-----------------|---|--|---|--|
| 2 | R93-4263 | 63-8560, 66-9320, 93-4263, 93-6039 | Bedknife - Tournament Cut .125 - .500 HOC | 1 | |
|---|-----------------|---|--|---|--|

Detail Description: R&R Bedknives are manufactured from high carbon-boron alloy steel and then hardened to RC46-49 to match the temper of our reel blades and original equipment reels. Bedknives are surface ground on the top and front edge and straightened three times before being packaged with oil for rust prevention. All R&R Bedknives now have an increased front edge grind for added life. All R&R Bedknives are guaranteed against defects in material and workmanship under normal use for the life of the part.:

R&R Razor Tool Steel Bedknives, Lifetime Guaranteed

| | | | | | |
|---|------------------|----------|---|---|--|
| 2 | R115-1881 | 115-1881 | Bedknife - Razor Tool Steel - 21 Tournament Cut .125 - .500 HOC | 1 | |
|---|------------------|----------|---|---|--|

All original equipment manufacturers names and part numbers are used for identification purposes only, and we are in no way implying that our products are original equipment parts. Prices subject to change without notice.



Replaces Toro Greensmaster 3050 Parts

DPA Cutting Unit - Models 04610, 04611 & 04616
Reel & Bedknife



| Item No | R&R Part No. | OEM Part No. | Description | Qty Req | Order Quantity |
|---------|--------------|--------------|-------------|---------|----------------|
|---------|--------------|--------------|-------------|---------|----------------|

Detail Description: R&R Razor bedknives are manufactured from premium alloy tool steel steel and then hardened to RC48-51 to match the temper of our Razor reel blades and original equipment premium series reels. Bedknives are surface ground on the top and front edge and specially packaged for rust prevention. All R&R Bedknives now have an increased front edge grind for added life. All R&R Bedknives are guaranteed against defects in material and workmanship under normal use for the life of the part. You can expect up to double the life over standard bedknives.:

| | | | | | |
|---|------------------|----------|---|---|--|
| 2 | R115-1880 | 115-1880 | Bedknife - Razor Tool Steel - 21 Micro Cut .062 - .187 HOC | 1 | |
|---|------------------|----------|---|---|--|

Detail Description: R&R Razor bedknives are manufactured from premium alloy tool steel steel and then hardened to RC48-51 to match the temper of our Razor reel blades and original equipment premium series reels. Bedknives are surface ground on the top and front edge and specially packaged for rust prevention. All R&R Bedknives now have an increased front edge grind for added life. All R&R Bedknives are guaranteed against defects in material and workmanship under normal use for the life of the part. You can expect up to double the life over standard bedknives.:

| | | | | | |
|---|----------------|--------|---|---|--|
| 2 | R150492 | 150492 | Bedknife - Razor Tool Steel - 21 Micro Cut Ext | 1 | |
|---|----------------|--------|---|---|--|

Detail Description: R&R Razor bedknives are manufactured from premium alloy tool steel steel and then hardened to RC48-51 to match the temper of our Razor reel blades and original equipment premium series reels. Bedknives are surface ground on the top and front edge and specially packaged for rust prevention. All R&R Bedknives now have an increased front edge grind for added life. All R&R Bedknives are guaranteed against defects in material and workmanship under normal use for the life of the part. You can expect up to double the life over standard bedknives.:

| | | | | | |
|---|------------------|----------|---|---|--|
| 2 | R112-7475 | 112-7475 | Bedknife - Razor Tool Steel - 22 x 3/8 Fairway | 1 | |
|---|------------------|----------|---|---|--|

Detail Description: R&R Razor bedknives are manufactured from premium alloy tool steel steel and then hardened to RC48-51 to match the temper of our Razor reel blades and original equipment premium series reels. Bedknives are surface ground on the top and front edge and specially packaged for rust prevention. All R&R Bedknives now have an increased front edge grind for added life. All R&R Bedknives are guaranteed against defects in material and workmanship under normal use for the life of the part. You can expect up to double the life over standard bedknives.:

Overhaul Kits

| | | | | | |
|---|------------------|----------|-----------------|---|--|
| 3 | R106-6937 | 106-6937 | Kit - Reel Seal | 1 | |
|---|------------------|----------|-----------------|---|--|

All original equipment manufacturers names and part numbers are used for identification purposes only, and we are in no way implying that our products are original equipment parts. Prices subject to change without notice.



Replaces Toro Greensmaster 3050 Parts

DPA Cutting Unit - Models 04610, 04611 & 04616
Reel & Bedknife



| Item No | R&R Part No. | OEM Part No. | Description | Qty Req | Order Quantity |
|---------|--------------|--------------|-------------|---------|----------------|
|---------|--------------|--------------|-------------|---------|----------------|

Detail Description: Includes: 2 ea: R106-6927 Sleeve, R106-6926 Inner Seal, R253-134 Outer Seal, R106-6929 V-Ring; & 1 ea: R104-0532 Washer:

Service Tools

| | | | | |
|---|-----------------|---------|----------------------------|---|
| 4 | R51-0880 | 51-0880 | Bedknife Screw Driver Tool | 1 |
|---|-----------------|---------|----------------------------|---|

Detail Description: Easily install and remove bed knife screws with the help of a ratchet with 3/8" drive. Tool manufactured with hardened alloy steel.:

Other Parts Available

| | | | | |
|---|---------------------|-------------|-------------------------------|---|
| 5 | R106-2600-01 | 106-2600-01 | Grass Shield | 1 |
| 6 | R104-2628 | 104-2628 | Bolt - Hex Washer M6-1.0 x 12 | 2 |

Tech Note: Fits 2003-2011:

| | | | | |
|---|---------------|--|------------------------------------|---|
| 6 | R323-6 | 01-150-0010, 01-178-0608, 20-47-AD, 20-47-AGD, 3224-2, 323-6, 49-3510, 908034P, 908332 | Bolt - Hex HD 3/8-16 x 1 GR5 YZ | 2 |
|---|---------------|--|------------------------------------|---|

Tech Note: Fits 2011 and up:

| | | | | |
|---|-------------------|---|------------------------------|---|
| 7 | R33114-016 | 33114-016, 42-9230, 42-9270, 48-7680, 48-7690, 48-7700 | Bolt - Hx HD 8mm x 1.25 x 15 | 2 |
|---|-------------------|---|------------------------------|---|

All original equipment manufacturers names and part numbers are used for identification purposes only, and we are in no way implying that our products are original equipment parts. Prices subject to change without notice.



Replaces Toro Greensmaster 3050 Parts

DPA Cutting Unit - Models 04610, 04611 & 04616
Reel & Bedknife



| Item No | R&R Part No. | OEM Part No. | Description | Qty Req | Order Quantity |
|------------------------------------|---------------------|--|--------------------------------|---------|----------------|
| 8 | R453009 | 01-166-0400, 24-10-BD, 24-9-AD, 32-9650, 3256-2, 3256-23, 3256-3, 3256-67, 3290-217, 3556-3, 4-2390, 7-0152 | Washer - Flat 5/16 SAE | 2 | |
| 9 | R33024-00 | 33024-00 | Locknut - 8mm x 1.25 | 4 | |
| 10 | R65-6270 | 119-4050, 65-6270 | Bolt - Bed Bar | 2 | |
| <i>Tech Note: Fits up to 2010:</i> | | | | | |
| 11 | R32128-48 | 32128-48 | Locknut - 7/16-20 Flanged | 2 | |
| <i>Tech Note: Fits up to 2010:</i> | | | | | |
| 12 | R52-2860 | 119-4150, 52-2860 | Washer - Bed Bar Pivot | 4 | |
| 13 | R52-2900 | 52-2900 | Washer - Nylon | 4 | |
| 14 | R63-9510 | 63-9480, 63-9510 | Bushing - Rubber For Bed Bar | 2 | |
| 15 | R52-2890 | 52-2890 | Bushing - Flanged | 2 | |
| 16 | R106-2648-01 | 106-2648-01 | Bed Bar | 1 | |
| 16 | R150176 | | Bed Bar - Fits R&R Units Only | 1 | |
| 16 | R99-3794-01 | 99-3794-01, 99-3794-03 | Bed Bar - Aggressive | 1 | |
| 17 | R150476 | 3-3816, 3-6462, 57-4910 | Screw - Bedknife 5/16-18 x 5/8 | 13 | |

All original equipment manufacturers names and part numbers are used for identification purposes only, and we are in no way implying that our products are original equipment parts. Prices subject to change without notice.



Replaces Toro Greensmaster 3050 Parts

DPA Cutting Unit - Models 04610, 04611 & 04616
Reel & Bedknife



| Item No | R&R Part No. | OEM Part No. | Description | Qty Req | Order Quantity |
|-------------------------------------|-------------------|------------------------------------|---|---------|----------------|
| 18 | R33025-00 | 32025-00, 33025-00 | Locknut - 10mm x 1.5 Jam | 2 | |
| 19 | R99-3755 | 99-3755 | Spring - Bed Bar Adjusting | 2 | |
| 20 | R99-2098 | 99-2098 | Washer - Bed Bar Adjuster | 2 | |
| 21 | R99-2096 | 99-2096 | Screw - Bed Bar Adjustment - M10 Thrd 1 End | 2 | |
| 22 | R106-5335 | 106-5335 | Wave Washer - Reel Adjusting | 2 | |
| 23 | R106-5344 | 106-5344 | Bushing - Flanged and Keyed | 4 | |
| 24 | R106-2619 | 106-2619 | Seal - Strip | 1 | |
| 25 | R105-5774 | 105-5774 | Bolt - Shoulder | 4 | |
| 26 | R98-0668 | 98-0668 | Nut - Whiz Lock | 4 | |
| 27 | R119-9303 | 105-5799, 119-9303 | Frame - Crossmember | 1 | |
| 28 | R99-2097 | 99-2097 | Detent - Bed Bar Adjuster | 2 | |
| 29 | R3255-8 | 3255-8 | Washer - Lock 5/16 Ext | 2 | |
| 30 | R33114-010 | 33114-010 | Bolt - Hex HD M8-1.25 x 10 | 2 | |
| <i>Tech Note: Fits 2003-2010:</i> | | | | | |
| 30 | R151379 | 33114-060, 42-9510 | Bolt - Hx HD 8-1.25 x 65mm | 2 | |
| <i>Tech Note: Fits 2003-2010:</i> | | | | | |
| 30 | R322-26 | 322-26 | Bolt - Hx HD 5/16-18 x 3/8 | 4 | |
| <i>Tech Note: Fits 2011 and up:</i> | | | | | |
| 31 | R106-6921 | 106-5334, 106-6921, 114-4634 | Shaft - Bed Bar Adjustment Assy | 2 | |

All original equipment manufacturers names and part numbers are used for identification purposes only, and we are in no way implying that our products are original equipment parts. Prices subject to change without notice.



Replaces Toro Greensmaster 3050 Parts

DPA Cutting Unit - Models 04610, 04611 & 04616
Reel & Bedknife



| Item No | R&R Part No. | OEM Part No. | Description | Qty Req | Order Quantity |
|-------------------------------------|---------------------|----------------------------------|---|---------|----------------|
| <i>Tech Note: Fits 2003:</i> | | | | | |
| 31 | R106-5363 | 106-5363 | Shaft - Adjusting - Bed Bar - Stainless | 2 | |
| <i>Tech Note: Fits 2004 and up:</i> | | | | | |
| 32 | R106-6924-03 | 106-2617-03, 106-6924-03 | Cut-Off Bar | 1 | |
| 33 | R110-3986 | 110-3986, 48-8870, 56-6380 | Screw - M6 x 1.0 x 20mm | 4 | |
| 34 | R33003-00 | 33003-00, 65-7980 | Hex Nut - Flanged 6-1.0mm | 4 | |
| 35 | R105-5711 | 105-5711, 119-4165 | Shim - Roller | 2 | |
| 36 | R105-5710 | 105-5710, 119-4166 | Spacer - Roller | 2 | |
| 37 | R105-5712 | 105-5712, 119-4157 | Retainer - Roller | 2 | |
| 38 | R106-2603 | 106-2603 | Bolt - Shoulder M6-1.0 x 45 | 4 | |
| 39 | R106-2635 | 106-2635 | Screw - HOC 2-7/16 | 2 | |
| 39 | R110-7352 | 110-7352 | Screw - HOC 2 5/8 Stainless | 2 | |
| 40 | R106-4668 | 106-4668 | Locknut - 10mm x 1.5 Top Lock | 2 | |
| 41 | R104-2603 | 104-2603, 119-4158 | Washer - HOC Bracket | 2 | |
| 42 | R150647 | 105-5342 | Plow Bolt - HOC - Front Roller | 2 | |
| 43 | R48-7610 | 33113-012, 48-7610 | Bolt - Hex HD Nyloc M6 x 12 | 2 | |
| 44 | R99-3781 | 99-3781 | Bracket - Front Roller 5 Oal | 2 | |

All original equipment manufacturers names and part numbers are used for identification purposes only, and we are in no way implying that our products are original equipment parts. Prices subject to change without notice.



Replaces Toro Greensmaster 3050 Parts

DPA Cutting Unit - Models 04610, 04611 & 04616
Reel & Bedknife



| Item No | R&R Part No. | OEM Part No. | Description | Qty Req | Order Quantity |
|-------------------------------------|------------------|-----------------------|--|---------|----------------|
| <i>Tech Note: Fits 2003:</i> | | | | | |
| 44 | R107-3502 | 107-3502 | Bracket - Front Roller 5-1/4 Oal | 2 | |
| <i>Tech Note: Fits 2004-2006:</i> | | | | | |
| 44 | R110-7351 | 110-7351 | Bracket - High HOC - 5 1/4 | 2 | |
| <i>Tech Note: Fits 2006 and up:</i> | | | | | |
| 44 | R106-4699 | 106-4699 | Bracket Kit - High Height of Cut (Set/2) | 1 | |
| <i>Tech Note: Set of 2:</i> | | | | | |
| 45 | R106-6929 | 106-6929 | V-Ring - Reel | 2 | |
| 46 | R93-2489 | 93-2489 | Bearing - Reel | 2 | |
| 47 | R106-2607 | 106-2607 | O-Ring - Reel | 1 | |
| 48 | R106-6926 | 106-6926 | Inner Seal - Reel | 2 | |
| 49 | R94-4507 | 94-4507 | Coupling - Reel | 1 | |
| 50 | R106-6927 | 106-6927 | Speedi-Sleeve - Reel | 2 | |
| 51 | R105-5700 | 105-5700, 115-5258 | Wave Washer - Bearing | 1 | |
| 52 | R150485 | 2410-30 | Cap - Protective Bearing Housing | 1 | |
| 53 | R94-3559 | 94-3559 | Screw - Hex Socket Head | 2 | |
| 54 | R104-9447 | 104-9447 | Adapter - Motor | 1 | |
| 56 | R105-5706 | 105-5706 | Locknut - Reel | 2 | |
| 57 | R253-134 | 253-134 | Outer Seal | 2 | |
| 58 | R105-5797 | 105-5797 | Side Plate - RH - Fits OEM Units Only | 1 | |

All original equipment manufacturers names and part numbers are used for identification purposes only, and we are in no way implying that our products are original equipment parts. Prices subject to change without notice.



Replaces Toro Greensmaster 3050 Parts

DPA Cutting Unit - Models 04610, 04611 & 04616
Reel & Bedknife



| Item No | R&R Part No. | OEM Part No. | Description | Qty Req | Order Quantity |
|---------|-------------------|--|---------------------------------------|---------|----------------|
| 58 | R105-5797G | | Side Plate - RH - Fits R&R Units Only | 1 | |
| 59 | R105-5795 | 105-5795 | Side Plate - LH - Fits OEM Units Only | 1 | |
| 59 | R105-5795G | | Side Plate - LH - Fits R&R Units Only | 1 | |
| 60 | R106-6914 | 106-6914, SG427541 | Snap Ring - Internal | 1 | |
| 61 | R105-5709 | 105-5709 | Weight | 1 | |
| 62 | R33114-040 | 33114-040, 42-9530 | Screw - Hh M8-1.25 x 40 CL8.8 | 2 | |
| 63 | R105-5708 | 105-5708, 121-4609 | Plug - Expansion | 1 | |
| 64 | R106-5336 | 106-5336 | Nut - 5/8-18 Jam Bed Bar Adj | 2 | |
| 66 | R94-2958 | 94-2958 | Stud - Alloy Ball Joint | 2 | |
| 67 | R3254-6 | 01-166-0010, 01-166-0280, 01-166-0610, 3253-5, 3254-18, 3254-6, 3290-223, 48-9370 | Washer - Lock 3/8 | 2 | |
| 68 | R105-5775 | 105-5775 | Retaining Ring - Reel Coupling | 1 | |
| 69 | R106-2633 | 106-2633 | Bolt - Hex Washer M10-1.5 x 16 | 2 | |
| 70 | R32120-93 | 32120-93 | Snap Ring - HD | 2 | |
| 72 | R105-5740 | 105-5740 | Hook - Lift | 1 | |
| 73 | R33115-025 | 33115-025, 48-7780 | Bolt - Hex HD M10-1.5 x 25 | 2 | |

All original equipment manufacturers names and part numbers are used for identification purposes only, and we are in no way implying that our products are original equipment parts. Prices subject to change without notice.



Replaces Toro Greensmaster 3050 Parts

DPA Cutting Unit - Models 04610, 04611 & 04616
Reel & Bedknife



| Item No | R&R Part No. | OEM Part No. | Description | Qty Req | Order Quantity |
|---|---------------------|--|------------------------------|---------|----------------|
| 74 | R3296-28 | 119-4154, 140-9234, 32127-34, 32128-7, 32128-8, 32136-7, 3296-28 | Nut - 1/2-20 ESNA Jam | 2 | |
| <i>Tech Note: Fits 2010-2011:</i> | | | | | |
| 75 | R117-9493 | 117-9493 | Bolt - Bed Bar - Hardened | 2 | |
| <i>Tech Note: Fits 2010-2011:</i> | | | | | |
| 76 | R119-3577-01 | 119-3577-01 | Shield-Grass | 1 | |
| 77 | R104-0532 | 104-0532 | Washer - Pulley | 1 | |
| <i>Tech Note: Used as a roller installation tool:</i> | | | | | |
| 78 | R3290-55 | 3290-55 | Rivet - 5/32 x 3/8 Pop Rivet | 2 | |

All original equipment manufacturers names and part numbers are used for identification purposes only, and we are in no way implying that our products are original equipment parts. Prices subject to change without notice.