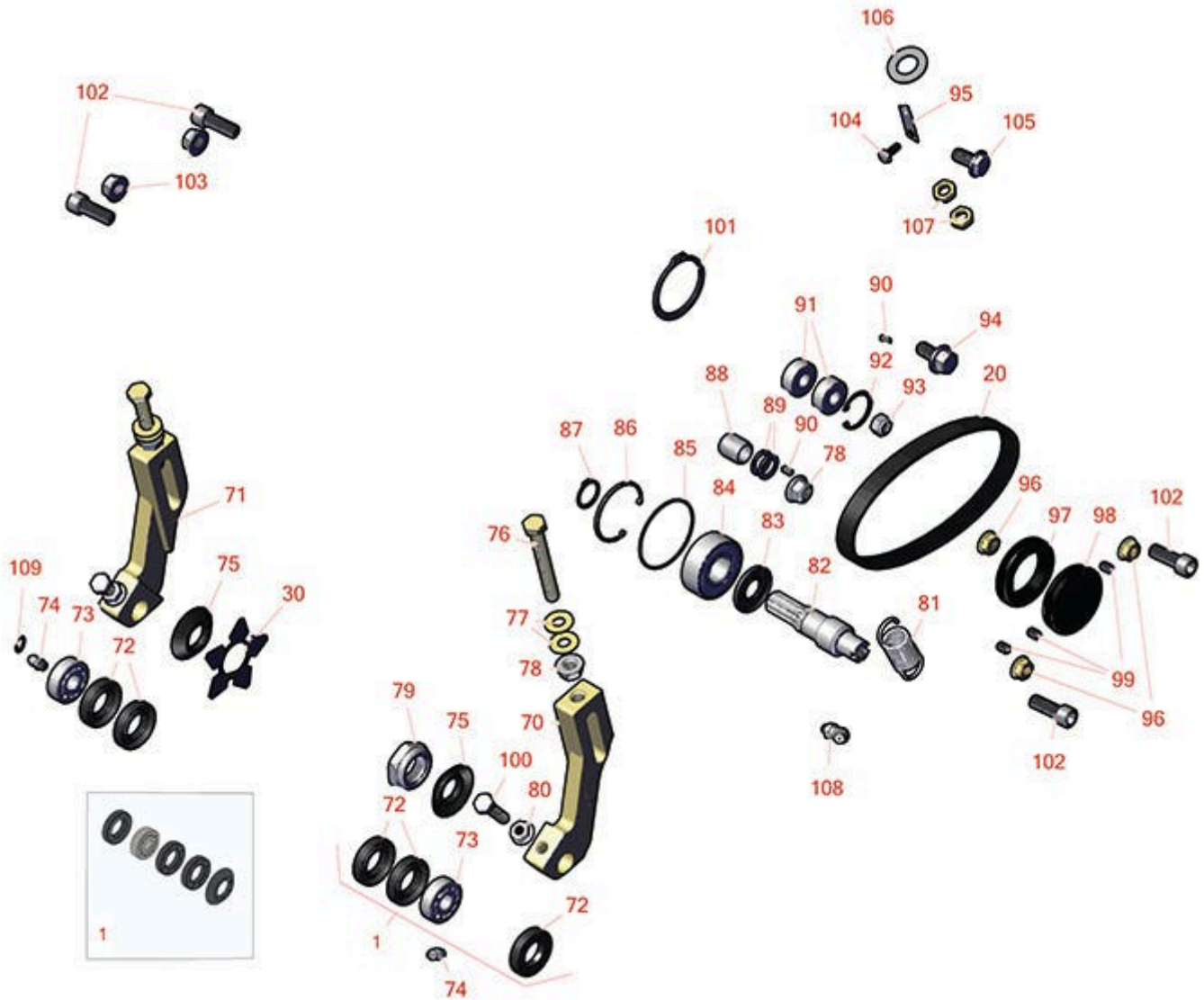




Replaces Toro Reelmaster 6500D Parts

DPA Cutting Unit - Models 03863 & 03864

Left-Hand Groomer Kit - Model 03686



All original equipment manufacturers names and part numbers are used for identification purposes only, and we are in no way implying that our products are original equipment parts. Prices subject to change without notice.



Replaces Toro Reelmaster 6500D Parts

DPA Cutting Unit - Models 03863 & 03864

Left-Hand Groomer Kit - Model 03686



Item No	R&R Part No.	OEM Part No.	Description	Qty Req	Order Quantity
Overhaul Kits					
1	R110-4086	110-4086	Kit - Bearing	0	
<i>Detail Description: Includes 1 ea: R95-0707 Bearing, R108-4172 Seal; & 3 ea: R106-8530 Seal:</i>					
Belts					
20	R110-1716	110-1716	Belt - Groomer	1	
Blades					
30	R112-6963	112-6963	Blade - Groomer	42	
Other Parts Available					
70	R108-4213	108-4213	Bracket- HOC - LH - Groomer	1	
71	R108-4214	108-4214	Bracket-HOC - RH - Groomer	1	
72	R106-8530	106-8530	Seal - Oil	5	
73	R95-0707	95-0707	Bearing - Self Aligning	2	
74	R302-5	21-6010, 302-11, 302-37, 302-47, 302-5, 302-57, 302-58, 302-6, 31-0300, 32-9660, 60-0800, 62-3880, 92-4181	Fitting - Grease	1	
75	R108-4172	108-4172	Seal - Excluder	5	
76	R112-7451	100-9429, 112-7451	Bolt - Hex Tap 3/8-16 x 2-3/4	2	

All original equipment manufacturers names and part numbers are used for identification purposes only, and we are in no way implying that our products are original equipment parts. Prices subject to change without notice.



Replaces Toro Reelmaster 6500D Parts

DPA Cutting Unit - Models 03863 & 03864

Left-Hand Groomer Kit - Model 03686



Item No	R&R Part No.	OEM Part No.	Description	Qty Req	Order Quantity
77	R453011	01-166-0100, 01-166-0120, 01-166-0270, 01-166-0500, 01-166-0600, 01-166-0620, 132-4593, 2356-3, 237-12, 24-10-AD, 24-11-AD, 24-11-BD, 24-12-AD, 24-12-BD, 30-9310, 32-8190, 3256-24, 3256-3, 3256-36, 3256-4, 453011, 47-9950, 48-9220, 513458, 7-0052	Washer - Flat 3/8 SAE Y/Zinc	4	
78	R104-8301	104-8301, 104-9301, 109-6658, 133-7570	Locknut - 3/8-16 Nylon Flanged	4	
78	R32128-19	104-8301, 104-9301, 32128-19	Locknut - 3/8-16 Flanged Top Lock	4	
79	R32127-46	32127-46, 3296-60	Locknut	2	
80	R445722	30-8980, 32128-2, 32128-20, 32128-20	Nut - Serrated Washer	2	
81	R110-1700	110-1700, 66-4460	Spring-Extension	1	

All original equipment manufacturers names and part numbers are used for identification purposes only, and we are in no way implying that our products are original equipment parts. Prices subject to change without notice.



Replaces Toro Reelmaster 6500D Parts

DPA Cutting Unit - Models 03863 & 03864

Left-Hand Groomer Kit - Model 03686



Item No	R&R Part No.	OEM Part No.	Description	Qty Req	Order Quantity
82	R108-4234	108-4234	Shaft - Drive	1	
83	R107-7795	107-7795	Seal - Oil	1	
84	R93-2559	93-2559	Bearing	1	
85	R112-6967	112-6967	O-Ring	2	
86	R32120-62	32120-62	Ring - Retaining	1	
87	R458013	30-0580, 32120-72, 458013, 93-2525, 936125	Ring - Retaining	1	
88	R108-4491	108-4491, 127-7139	Spacer - Hardened	1	
89	R112-6957	112-6957	Washer - Hardened	2	
90	R95-9619	95-9619	Key - Square 1/8 x 1/8 x 5/16	1	
91	R110-1701	110-1701	Bearing	2	
92	R32151-60	32151-60	Ring - Snap	1	
93	R3296-47	3296-47	Locknut - 5/16-18 Jam Nyloc	1	
94	R110-1718	110-1718	Screw-HHF	1	
95	R104-4754	104-4754	Spring-Detent	2	
96	R104-8300	104-8300, 104-8300 , 119-4041	Locknut - 5/16-18 Flanged Y/Zinc	3	
97	R240-7	240-7	Grommet - Rubber - 2 in OD	1	
98	R105-5761	105-5761	Grommet	1	

All original equipment manufacturers names and part numbers are used for identification purposes only, and we are in no way implying that our products are original equipment parts. Prices subject to change without notice.



Replaces Toro Reelmaster 6500D Parts

DPA Cutting Unit - Models 03863 & 03864

Left-Hand Groomer Kit - Model 03686



Item No	R&R Part No.	OEM Part No.	Description	Qty Req	Order Quantity
99	R415521	32-113-AHNC, 32137-1, 3246-2, 909862P	Screw - Set - 5/16-18 x 3/8	2	
100	R322-16	322-16, Apr-00	Bolt - Hex HD 5/16-18 x 1-1/8	2	
101	R32151-95	32151-90, 32151-95	Retaining Ring	1	
102	R3274-7	3247-7, 3274-7	Bolt - Soc HD Cap 3/8-16 x 1	4	
103	R3296-39	32127-25, 32128-36, 3290-357, 3296-17, 3296-22, 3296-39, 915663P, 99-7443	Locknut - 3/8-16 Nylon	2	
103	R32128-43	30-8990, 32128-43, 3290-357	Nut - Flanged Whiz - 3/8-16	2	
104	R32144-73	104-2065, 32144-73	Screw - Machine Hex Washer Head	2	
105	R3234-1	321-11, 3234-1	Bolt - Flanged Serrated Hex HD 3/8-16 x 3/4	2	
105	R400120	01-150-0990, 01-178-0416, 02-150-0990, 321-11, 3222-4, 33114-010, 33114-060, 513327, 908470	Bolt - Hex HD 1/4-20 x 2	2	
105	R33114-010	33114-010	Bolt - Hex HD M8-1.25 x 10	2	

All original equipment manufacturers names and part numbers are used for identification purposes only, and we are in no way implying that our products are original equipment parts. Prices subject to change without notice.



Replaces Toro Reelmaster 6500D Parts

DPA Cutting Unit - Models 03863 & 03864

Left-Hand Groomer Kit - Model 03686



Item No	R&R Part No.	OEM Part No.	Description	Qty Req	Order Quantity
106	R3256-69	3256-69	Washer - Flat	2	
107	R3220-3	01-191-0624, 3220-3, 3290-149	Nut - Jam Ball Joint	4	
108	R700414	302-11, 302-19, 302-4, 32-8170	Zerk - Grease 1/4-28 45 Deg	1	
109	R237-22	107-8844, 237-22, 237-78	O-Ring	1	

All original equipment manufacturers names and part numbers are used for identification purposes only, and we are in no way implying that our products are original equipment parts. Prices subject to change without notice.