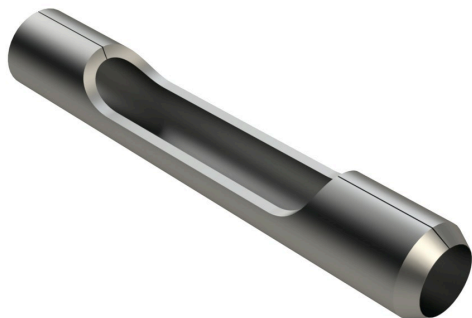




Alloy Side-Eject Spoon - 3/4 Closed

R834973



Details

Manufactured in our own facility from heavy-duty alloy steel and heat treated to RC45-48 for durability and wear, these spoons are formed with an open slot in the side for easy core ejection and to avoid plugging.

Replaces

Cushman	834973
R&R Products	R92-7900
Toro	92-7900

Specifications

Manufacturer	R&R Products
A - Tine Type	Alloy Side-Eject Spoon
B - Tine Mounting Dia.	.875 in (22mm)
C - Tine Length	5.500 in (140mm)
D - Tine Tip Outside (Hole) Dia.	.925 in (23.5mm)
E - Tine Tip Inside (Core) Dia.	.625 in (15.9mm)
F - Tine Wall Thickness	.150 in (3.8mm)

Fits Models

Cushman GA60
John Deere Aercore 1000
John Deere Aercore 1500
John Deere Aercore 2000
John Deere Aercore 800
Ryan GA30
Ryan GA60
Toro Fairway Aerator
Toro ProCore 648
Toro ProCore 660

Gritmaster

309 Percy Osborn Road Morningside, 4001
0313035785

<https://gritmaster.rrproducts.com/>



Alloy Side-Eject Spoon - 3/4 Closed

R834973



Toro ProCore 880

Toro ProCore 648s

Gritmaster

309 Percy Osborn Road Morningside, 4001
0313035785

<https://gritmaster.rrproducts.com/>