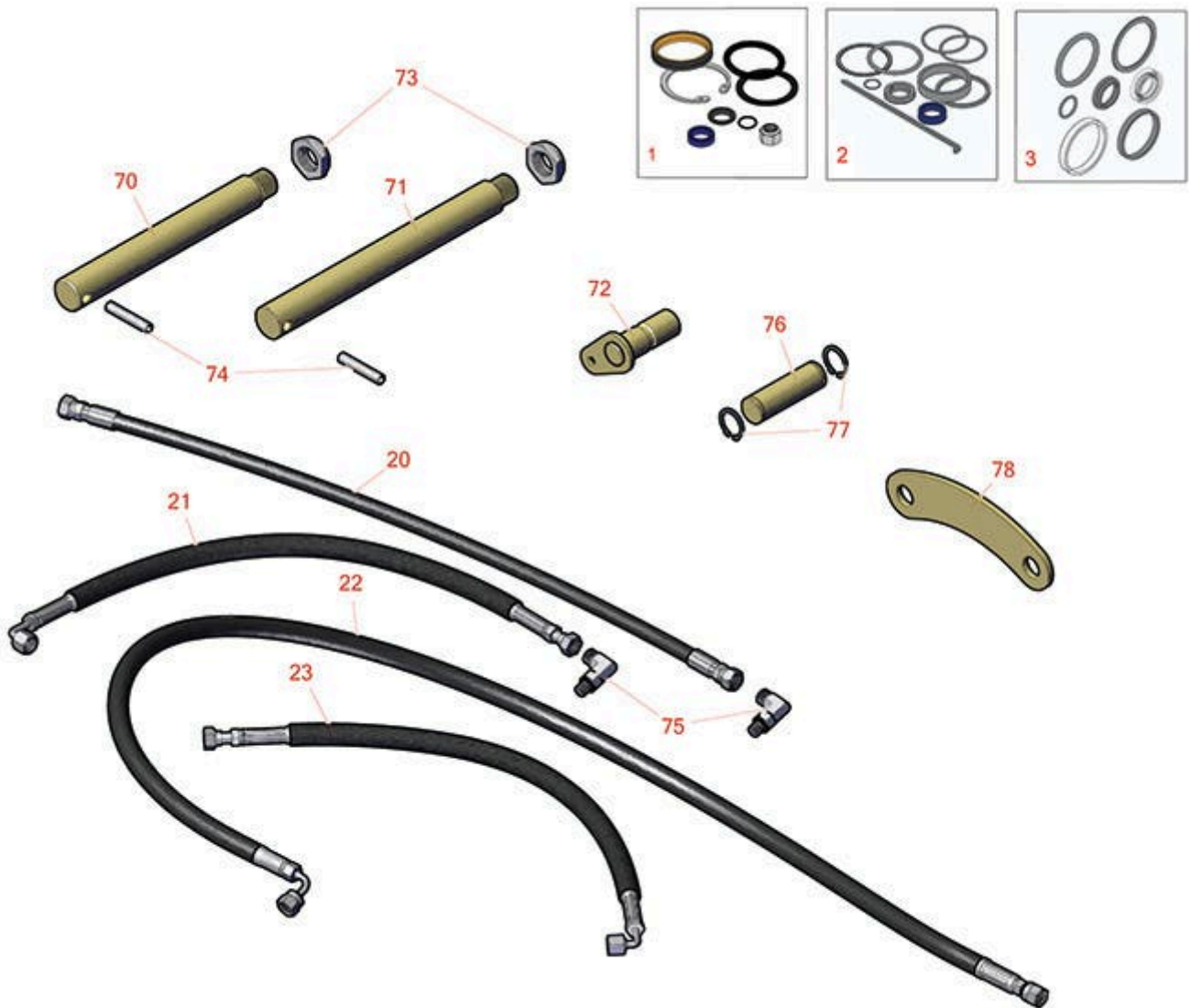




# Replaces Toro Reelmaster 6700D Parts

Traction Unit - Models 03802 & 03805

Lift Arm



All original equipment manufacturers names and part numbers are used for identification purposes only, and we are in no way implying that our products are original equipment parts. Prices subject to change without notice.



# Replaces Toro Reelmaster 6700D Parts

Traction Unit - Models 03802 & 03805

Lift Arm



Item No	R&R Part No.	OEM Part No.	Description	Qty Req	Order Quantity
---------	--------------	--------------	-------------	---------	----------------

## Overhaul Kits

1	<b>R86-5390</b>	72-9680, 74-3590, 83-7240, 86-5390	Seal Kit - Hyd Cyl	1	
---	-----------------	---	--------------------	---	--

*Tech Note: Used on Hydraulic Cylinder No. 94-8141:*

2	<b>R107-2564</b>	107-2564	Seal Kit - Fits 107-1981 Hyd Cyl	1	
---	------------------	----------	----------------------------------	---	--

*Tech Note: Used on Hydraulic Cylinder No. 108-4440:*

3	<b>R86-7330</b>	75-2140, 86-7330	Overhaul Kit - Cylinder	1	
---	-----------------	---------------------	-------------------------	---	--

*Tech Note: Used on Hydraulic Cylinder No. 93-7555, 92-7420 and 93-2650:*

## Hoses

20	<b>R92-7564</b>	92-7564	Hydraulic Hose Assy	2	
----	-----------------	---------	---------------------	---	--

21	<b>R75-5890</b>	75-5890	Hose - Front RH-LH Lift Cyl	2	
----	-----------------	---------	-----------------------------	---	--

22	<b>R92-7638</b>	92-7638	Hydraulic Hose Assy	2	
----	-----------------	---------	---------------------	---	--

23	<b>R100-3833</b>	100-3833	Hydraulic Hose Assy	1	
----	------------------	----------	---------------------	---	--

## Other Parts Available

70	<b>R98-8826</b>	98-8826	Pin-Pivot	2	
----	-----------------	---------	-----------	---	--

*Tech Note: Used on Rear No. 6 and No. 7 Lift Arm Assembly:*

71	<b>R95-7158</b>	95-7158	Pin - Pivot	2	
----	-----------------	---------	-------------	---	--

*Tech Note: Used on Front and Rear Lift Arms Assembly:*

72	<b>R105-9889</b>	105-9889, 125-1906	Cylinder Pin Assy	2	
----	------------------	-----------------------	-------------------	---	--

73	<b>R3296-49</b>	3296-49	Locknut - 1 in 14	4	
----	-----------------	---------	-------------------	---	--

74	<b>R32121-110</b>	32121-110	Roll Pin - Slotted	4	
----	-------------------	-----------	--------------------	---	--

All original equipment manufacturers names and part numbers are used for identification purposes only, and we are in no way implying that our products are original equipment parts. Prices subject to change without notice.



# Replaces Toro Reelmaster 6700D Parts

*Traction Unit - Models 03802 & 03805*

*Lift Arm*



Item No	R&R Part No.	OEM Part No.	Description	Qty Req	Order Quantity
75	<b>R340-132</b>	340-132	Hydraulic Fitting - 90 Deg	5	
76	<b>R92-7548</b>	92-7548	Pin - Cylinder	2	
77	<b>R458039</b>	32151-36	Ring - Retaining	4	
78	<b>R98-8821</b>	98-8821	Link - Rear	1	

All original equipment manufacturers names and part numbers are used for identification purposes only, and we are in no way implying that our products are original equipment parts. Prices subject to change without notice.