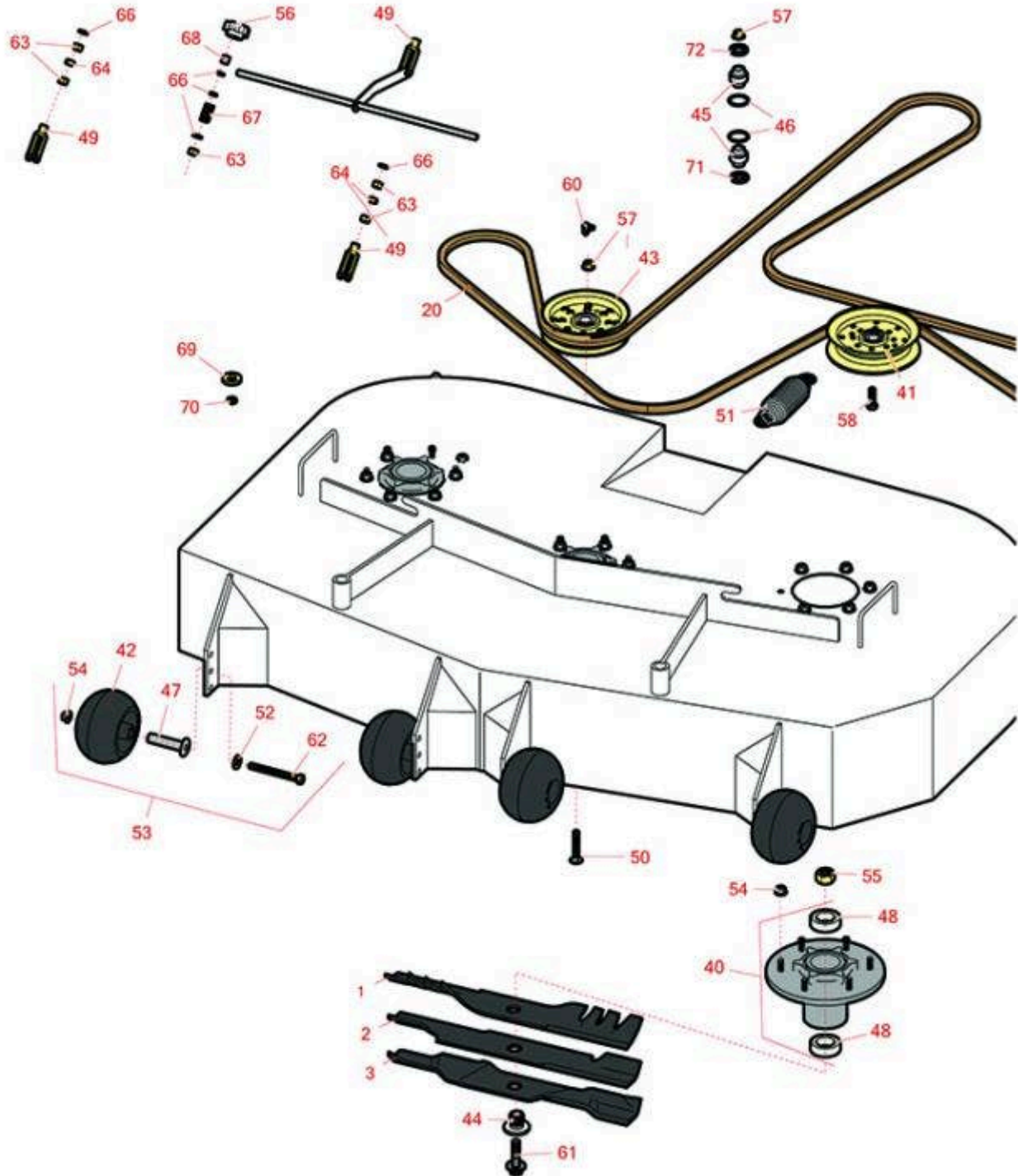




Replaces Exmark Turf Tracer X-Series Parts

Walk Behind Mower - Model TTX691CKA52400 with 52in
Deck
52in Deck Parts



All original equipment manufacturers names and part numbers are used for identification purposes only, and we are in no way implying that our products are original equipment parts. Prices subject to change without notice.



Replaces Exmark Turf Tracer X-Series Parts

Walk Behind Mower - Model TTX691CKA52400 with 52in
Deck
52in Deck Parts



Item No	R&R Part No.	OEM Part No.	Description	Qty Req	Order Quantity
Rotary Blades					
1	R116-5175	116-5175	Mower Blade - 18 in Mulching	3	
1	RRB4065-1803	116-5175, 116-5175-S	Mower Blade - Mulcher 18 x 2.5in x 15/16 Mt Hole	3	
2	RRB3065-1803	103-6402, 103-6402-S, 106-6402	Mower Blade - High-Lift 18 x 2.5in x 15/16 Mt Hole	3	
<i>Detail Description: R&R Products rotary blades are manufactured in the USA with superior alloy steel and hardened for extended life. Lifetime guaranteed against defects in material and workmanship.:</i>					
3	RRB5360-1803	103-6392, 103-6392-S	Mower Blade - Wave Mulcher 18 x 2.5in x 15/16 Mt Hole	3	
Belt					
20	R126-2538	126-2538	Belt- Deck Drive	1	
Other Parts Available					
40	R116-3344	116-3344	Spindle Housing Assy	3	
41	R126-9196	126-9196	Idler Pulley - Flat	2	
42	R103-8415	103-8415	Roller - Anti Scalp	6	
43	R126-9197	126-9197	Pulley - Idler - Flat 5.00 x 1.31	2	
44	R103-3037	103-3037	Splined Bushing	3	
45	R103-3504	103-3504	Bearing - Spherical	2	
46	R106-7159	106-7159	O-Ring	2	
47	R116-8131	116-8131	Axle - Roller	6	
48	R116-0720	116-0720	Bearing - Ball - Special Triple Seal	6	

All original equipment manufacturers names and part numbers are used for identification purposes only, and we are in no way implying that our products are original equipment parts. Prices subject to change without notice.



Replaces Exmark Turf Tracer X-Series Parts

Walk Behind Mower - Model TTX691CKA52400 with 52in
Deck
52in Deck Parts



Item No	R&R Part No.	OEM Part No.	Description	Qty Req	Order Quantity
49	R282-2	1-303105	Yoke	3	
50	R3231-40	3231-40	Bolt - Carriage 3/8-16 x 2 1/4	2	
51	R116-6317	116-0133, 116-6317	Spring - Extension	1	
52	R98-5975	98-5975	Washer - Belleville	6	
53	R116-9981	116-9981	Kit - Anti-Scalp Roller	6	
54	R104-8301	104-8301, 109-6658	Locknut - 3/8-16 Nylon Flanged	24	
55	R116-7306	116-7306	Hex Nut - 3/4-16 with Nyloc	3	
56	R103-3060	103-3060	Knob - Tracking	1	
57	R32128-19	104-8301, 32128-19	Locknut - 3/8-16 Flanged Top Lock	2	
58	R400264	323-29, 323-7	Bolt - Hex HD 3/8-16 x 1-1/4	1	
60	R302-40	302-40	Fitting - Grease	1	
61	R109-9220	109-9220	Bolt - Sems 1/2-20	3	
62	R116-9362	116-9362	Bolt - Hex HD 3/8-16 x 3 3/4 GR8 YZ	6	
63	R3219-2	3219-2	Nut - 5/16-24 Zinc	7	
64	R3220-2	3220-2	Nut - Jam - 5/16-24	2	
66	R453009	3256-2, 3256-3, 3256-67	Washer - Flat 5/16 SAE	9	
67	R1-323245	1-323245	Spring - Compression	1	
68	R1-603903	1-603903	Spacer	1	

All original equipment manufacturers names and part numbers are used for identification purposes only, and we are in no way implying that our products are original equipment parts. Prices subject to change without notice.



Replaces Exmark Turf Tracer X-Series Parts



*Walk Behind Mower - Model TTX691CKA52400 with 52in
Deck
52in Deck Parts*

Item No	R&R Part No.	OEM Part No.	Description	Qty Req	Order Quantity
69	R1-323539	1-323539	Spacer	2	
70	R3220-3	3220-3	Nut - Jam Ball Joint	2	
71	R103-3505	103-3505	Seal - Double Lip	1	
72	R103-3506	103-3506	Seal - Single Lip	1	

All original equipment manufacturers names and part numbers are used for identification purposes only, and we are in no way implying that our products are original equipment parts. Prices subject to change without notice.