

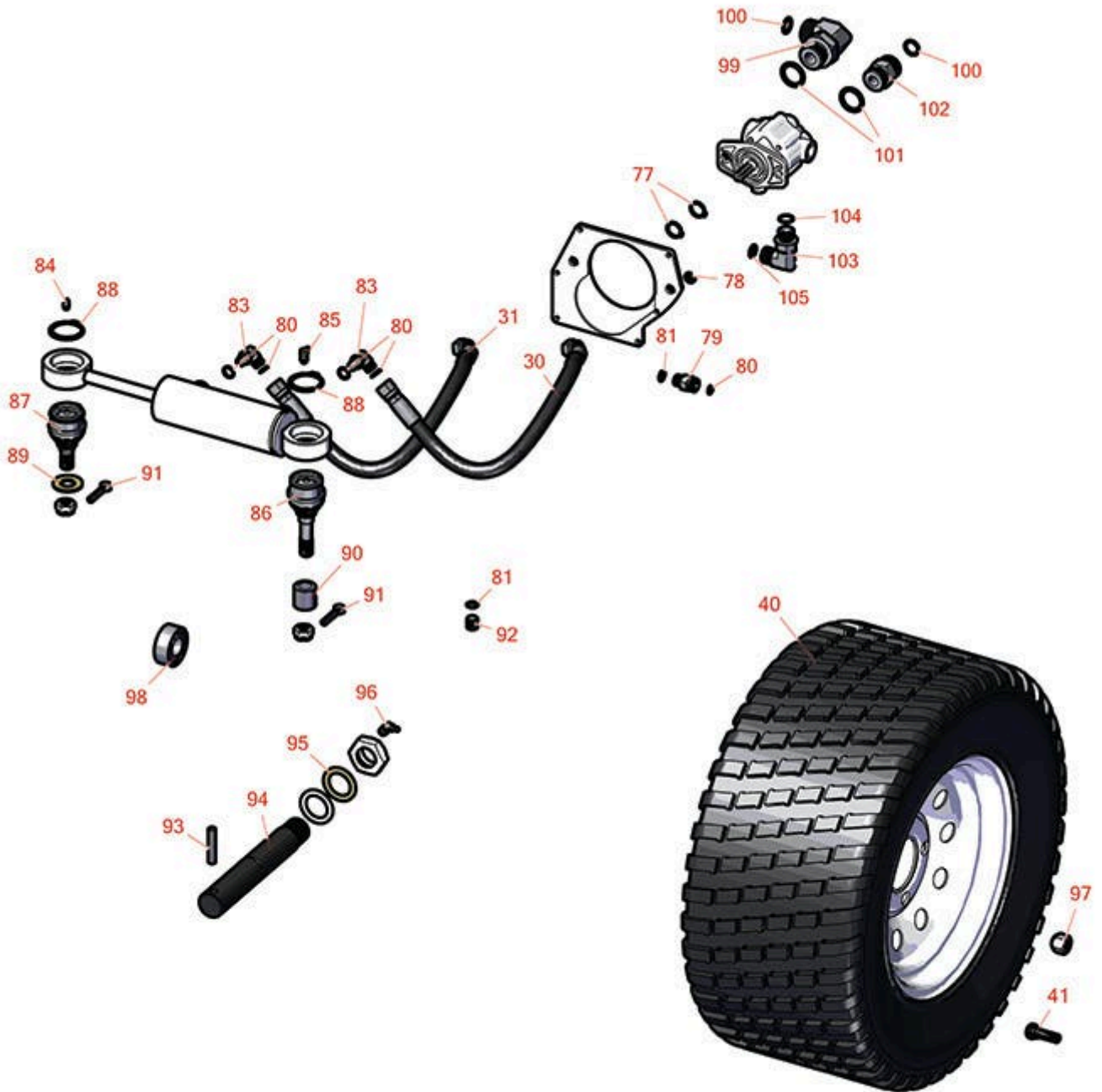
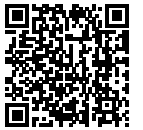


Replaces Toro Groundsmaster 4700-D

Parts

Traction Unit - Model 30899

Rear Axle



FOR MORE TIRE SELECTIONS PLEASE
CLICK ON THE TIRE ICON ABOVE.

All original equipment manufacturers names and part numbers are used for identification purposes only, and we are in no way implying that our products are original equipment parts. Prices subject to change without notice.



Replaces Toro Groundsmaster 4700-D Parts

Traction Unit - Model 30899
Rear Axle



Item No	R&R Part No.	OEM Part No.	Description	Qty Req	Order Quantity
Hoses					
30	R92-7539	92-7539	Hydraulic Hose Assy	1	
31	R125-4560	125-4560	Hose Assy	1	
Tires					
40	RCT511116	115-1572	Tire - 20x10.00-10 Nhs (4 Ply) Carlisle Turf Saver	2	
41	R232-24	232-24, 232-35	Stem - Valve w/ Cap	2	
41	R232-27	232-27, 232-31	Stem - Valve w/ Cap	2	
Other Parts Available					
77	R32120-15	32120-15	Ring - Snap	2	
78	R3253-4	01-166-0110, 01-166-0510, 23-10-GD, 24-7170, 30-8520, 3253-4, 48-9350, 48-9360, 48-9570, 68-9420, 99-7577	Washer - Lock 5/16 Zinc	1	
79	R340-2	340-2, 60-1920	Hydraulic Fitting - Striaight	4	
80	R237-22	107-8844, 237-22, 237-78	O-Ring	4	
81	R237-42	237-42, 31-4160	O-Ring	4	
83	R340-97	340-97	Hydraulic Fitting - 90 Deg	2	

All original equipment manufacturers names and part numbers are used for identification purposes only, and we are in no way implying that our products are original equipment parts. Prices subject to change without notice.



Replaces Toro Groundsmaster 4700-D Parts

Traction Unit - Model 30899
Rear Axle



Item No	R&R Part No.	OEM Part No.	Description	Qty Req	Order Quantity
84	R302-5	21-6010, 302-11, 302-37, 302-47, 302-5, 302-57, 302-58, 302-6, 31-0300, 32-9660, 60-0800, 62-3880, 92-4181	Fitting - Grease	1	
85	R302-60	302-60	Zerk - Grease 90 Deg.	1	
86	R100-3795	100-3795	Ball Joint	1	
87	R106-6774	106-6774, 92-5838, 92-5838-01	Ball Joint	1	
88	R32151-104	32151-104	Ring - Retaining, Ex	2	
89	R92-5836	92-5836	Flat Washer - Hardened	1	
90	R100-3796	100-3796	Spacer - Ball Joint	1	
91	R3272-11	01-151-0010, 01-151-0040, 28-18-D, 28-28-D, 3211-72, 3272-11	Pin - Cotter	2	
92	R353-989	353-989	Plug - Hex - Hollow	1	
93	R32121-110	32121-110	Roll Pin - Slotted	1	
94	R115-9142	115-9142	Pin - Rear Axle	1	
95	R92-1765	92-1765	Washer - Thrust	1	
96	R323016	302-33, 323016	1/8"-NPT 90 Degree Grease Fitting	1	

All original equipment manufacturers names and part numbers are used for identification purposes only, and we are in no way implying that our products are original equipment parts. Prices subject to change without notice.



Replaces Toro Groundsmaster 4700-D Parts

*Traction Unit - Model 30899
Rear Axle*



Item No	R&R Part No.	OEM Part No.	Description	Qty Req	Order Quantity
97	R93-5268	93-5268	Nut - M12-1.5 Wheel	10	
98	R99-7534	99-7534	Bearing - Double Row Ball	2	
99	R340-142	340-142, 95-1692	Hydraulic Fitting - 90 Deg	2	
100	R237-58	237-58	O-Ring	2	
101	R237-81	237-81, 237.81, 327-81	O-Ring	2	
102	R340-9	340-9	Fitting - Straight Connector	2	
103	R340-98	340-98	Hydraulic Fitting	3	
104	R237-79	237-79	O-Ring	1	
105	R237-30	23-6320, 237-30	O-Ring - Seal	1	

All original equipment manufacturers names and part numbers are used for identification purposes only, and we are in no way implying that our products are original equipment parts. Prices subject to change without notice.