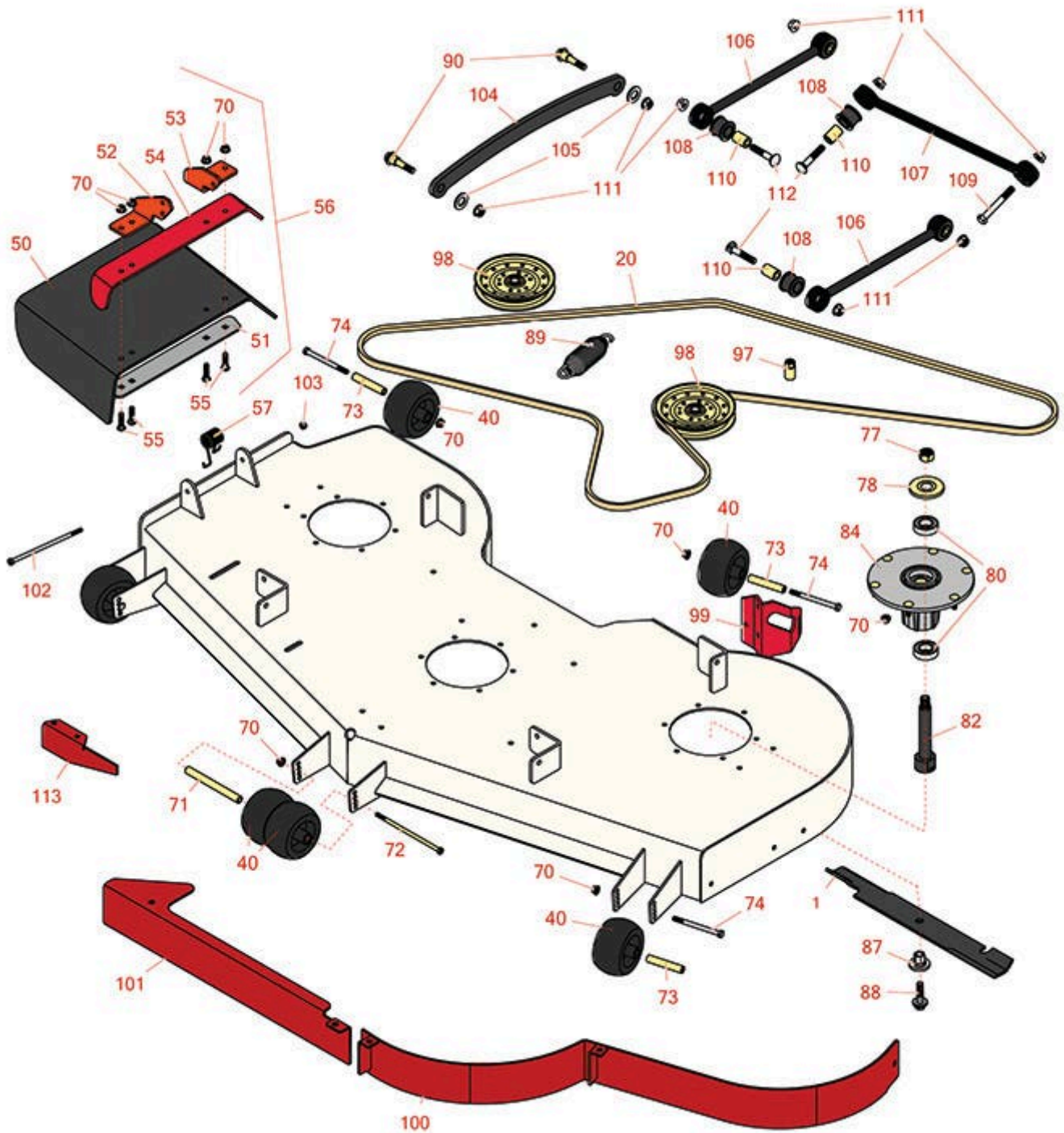




Replaces Toro Z Master Professional 7500-D Parts

Zero-Turn Mower with 72in Deck - Model 72076
72in Rotary Deck



All original equipment manufacturers names and part numbers are used for identification purposes only, and we are in no way implying that our products are original equipment parts. Prices subject to change without notice.



Replaces Toro Z Master Professional 7500-D Parts

Zero-Turn Mower with 72in Deck - Model 72076
72in Rotary Deck



Item No	R&R Part No.	OEM Part No.	Description	Qty Req	Order Quantity
Rotary Blades					
1	R105-7718-03	105-7718-03	Mower Blade - 20.5 in High-Flow	3	
Belts					
20	R126-6855	126-6855	Belt - V	1	
Other Parts Available					
40	R68-2730	1-603299, 68-2730	Wheel - Anti Scalp	6	
50	R151416	108-5029, 110-0759, 151416	Deflector - Long	1	
51	R106-3248-03	106-3248-03	Strap - Discharge	1	
52	R106-3253-01	106-3253-01	Plate-Hinge, Front	1	
53	R108-4059-01	108-4059-01	Plate-Hinge, Rear	1	
54	R106-3246-01	106-3246-01	Deflector	1	
55	R3231-4	01-157-0440, 01-173-0612, 3231-4	Bolt - Carriage 3/8-16 x 1-1/2	4	
56	R108-2792	108-2792	Rubber Deflector Assy	1	
57	R108-4052	108-4052	Spring - Torsion	1	
70	R104-8301	104-8301, 104-9301, 109-6658, 133-7570	Locknut - 3/8-16 Nylon Flanged	42	
71	R98-5967	98-5967	Spacer-Wheel	1	
72	R108-5388	108-5388	Bolt - Hx HD 3/8-16 x 7 1/2	1	
73	R98-7912	98-7912	Bushing - Spanner Wheel	4	

All original equipment manufacturers names and part numbers are used for identification purposes only, and we are in no way implying that our products are original equipment parts. Prices subject to change without notice.



Replaces Toro Z Master Professional 7500-D Parts

Zero-Turn Mower with 72in Deck - Model 72076
72in Rotary Deck



Item No	R&R Part No.	OEM Part No.	Description	Qty Req	Order Quantity
74	R323-23	01-150-0810, 01-178-0636, 20-60-AGD, 323-23	Bolt - Hex HD 3/8-16 x 4-1/2	4	
77	R116-7306		Hex Nut - 3/4-16 with Nyloc	3	
78	R103-1330	103-1330	Guard - Bearing - Top	3	
80	R116-0720	116-0720	Bearing - Ball - Special Triple Seal	6	
82	R138-6045	138-6045	Shaft - Spindle	3	
84	R137-9780	137-9780	Spindle Assy	3	
87	R137-9787	137-9787	Bushing - Hex	3	
88	R109-9220	109-9220	Bolt - Sems 1/2-20	3	
89	R116-6317	116-0133, 116-6317	Spring - Extension	1	
90	R116-2022	116-2022	Shoulder Bolt - Flanged Hex Head	2	
97	R109-7840	109-7840	Adjuster - Lift - Deck	4	
98	R116-4667	116-4667, 126-7685	Idler -Pulley - Flat	3	
99	R106-7354-01	106-7354-01	Mount - Wheel - LH	1	
100	R114-5843-01	114-5843-01	Baffle	1	
101	R138-6051-01	138-6051-01	Plate - Baffle	1	
102	R322-50	322-50	Bolt - Hx HD 5/16-18 x 7 1/2	1	
103	R3296-47	3296-47	Locknut - 5/16-18 Jam Nyloc	1	
104	R116-0797-03	116-0797-03	Link-Lift - Deck	1	

All original equipment manufacturers names and part numbers are used for identification purposes only, and we are in no way implying that our products are original equipment parts. Prices subject to change without notice.



Replaces Toro Z Master Professional 7500-D Parts

Zero-Turn Mower with 72in Deck - Model 72076
72in Rotary Deck



Item No	R&R Part No.	OEM Part No.	Description	Qty Req	Order Quantity
105	R453022	01-166-0480, 01-166-1220, 21-3880, 217-21, 30-8550, 30-9110, 3256-28, 3256-44, 46-9030, Mar-71	Washer - 3/4 SAE	2	
106	R109-7952	109-7952	Deck Strut Assy	2	
107	R109-5013	109-5013	Panhard Rod Assy	1	
108	R109-5009	109-5009	Bushing - Suspension - Rubber	6	
109	R325-17	01-150-0640, 01-150-0850, 01-178-0832, 01-178-0836, 20-97-AGD, 325-17, 325-18, 48-9260	Bolt - Hex Head	1	
110	R109-5010	109-5010	Spacer	6	
111	R32128-23	32128-23, 3218-23, 99-5107	Nut - Lock Hex Flanged 1/2-13	8	
112	R3233-34	3233-34	Carriage Bolt - 1/2-13 x 2 1/2 Grade 5	3	
113	R106-3216-01	106-3216-01	Baffle - Discharge	1	

All original equipment manufacturers names and part numbers are used for identification purposes only, and we are in no way implying that our products are original equipment parts. Prices subject to change without notice.