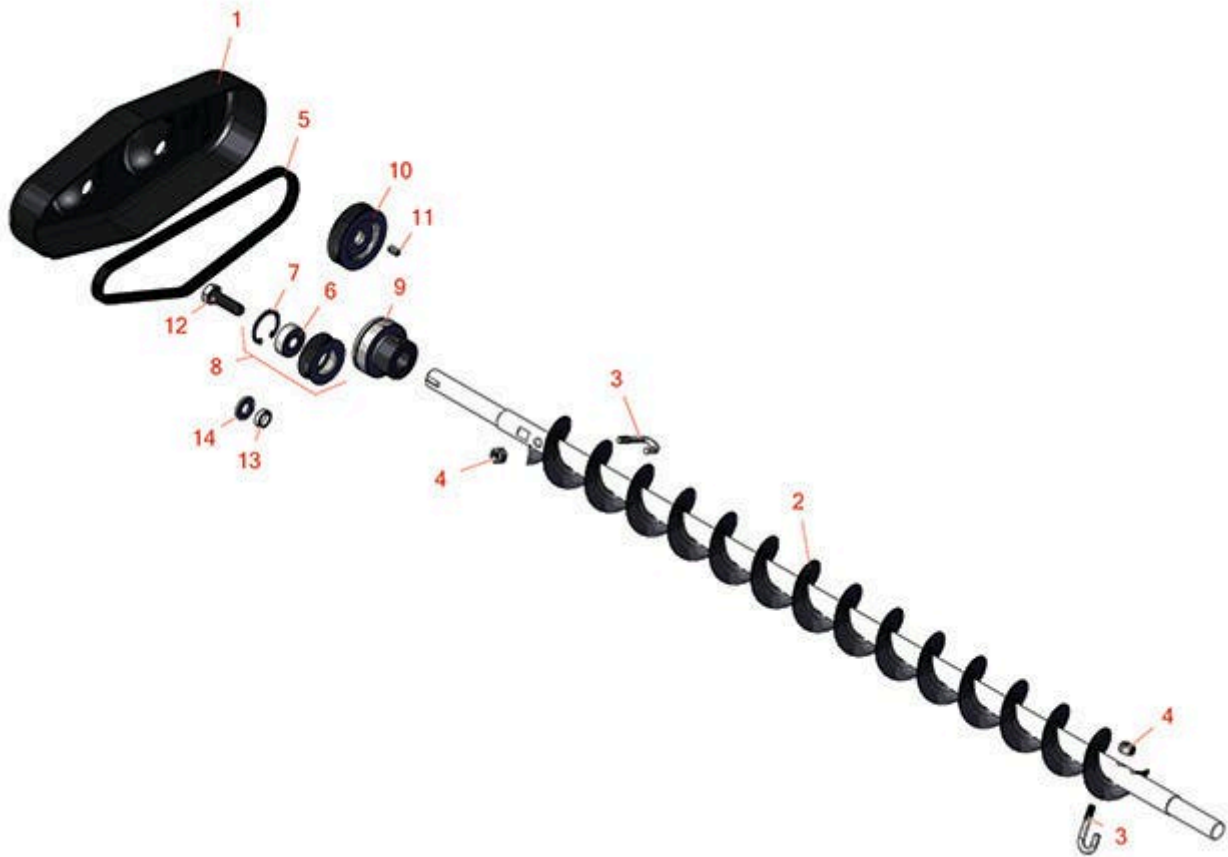




# Replaces Toro Greensmaster 3050 Parts

DPA Cutting Unit - Models 04618, 04619 & 04624

Rear Roller Brush - Models 04724 & 04726



All original equipment manufacturers names and part numbers are used for identification purposes only, and we are in no way implying that our products are original equipment parts. Prices subject to change without notice.



# Replaces Toro Greensmaster 3050 Parts

*DPA Cutting Unit - Models 04618, 04619 & 04624*

*Rear Roller Brush - Models 04724 & 04726*



Item No	R&R Part No.	OEM Part No.	Description	Qty Req	Order Quantity
1	<b>R105-5719</b>	105-5719	Cover - Rear Brush	1	
2	<b>R105-6792</b>	104-1829, 105-6792	Brush - Rear Roller	1	
3	<b>R104-1830</b>	104-1830	Bolt - J	2	
4	<b>R3296-2</b>	32127-10, 3296-2, 9157404	Nut - #10 Lock	2	
5	<b>R105-5720</b>	105-5720	Belt - Poly V	1	
6	<b>R251-259</b>	251-259, 251-307	Bearing - Ball	1	
7	<b>R104-4727</b>	104-4727	Ring - Retaining	1	
8	<b>R104-1834</b>	104-1820, 104-1834	Idler Bearing - Assy	1	
9	<b>R104-1842</b>	104-1842	Bearing - Roller	2	
10	<b>R106-6917</b>	106-6917	Pulley - Driven	1	
11	<b>R95-9619</b>	95-9619	Key - Square 1/8 x 1/8 x 5/16	1	
12	<b>R322-5</b>	01-178-0508, 20-26-AD, 20-26-AGD, 30-9000, 322-5, 513341, 519755, 908019P, N/A	Bolt - Hex HD 5/16-18 x 1	1	
13	<b>R82-4240</b>	82-4240	Spacer - Bearing	1	

All original equipment manufacturers names and part numbers are used for identification purposes only, and we are in no way implying that our products are original equipment parts. Prices subject to change without notice.



# Replaces Toro Greensmaster 3050 Parts

*DPA Cutting Unit - Models 04618, 04619 & 04624*

*Rear Roller Brush - Models 04724 & 04726*



Item No	R&R Part No.	OEM Part No.	Description	Qty Req	Order Quantity
14	<b>R453009</b>	01-166-0400, 24-10-BD, 24-9-AD, 32-9650, 3256-2, 3256-23, 3256-3, 3256-67, 3290-217, 3556-3, 4-2390, 7-0152	Washer - Flat 5/16 SAE	1	

All original equipment manufacturers names and part numbers are used for identification purposes only, and we are in no way implying that our products are original equipment parts. Prices subject to change without notice.