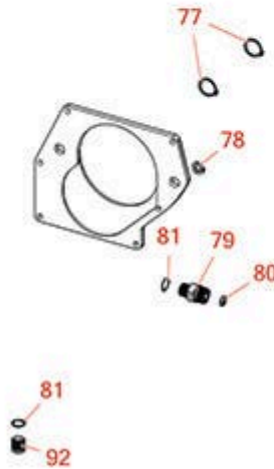
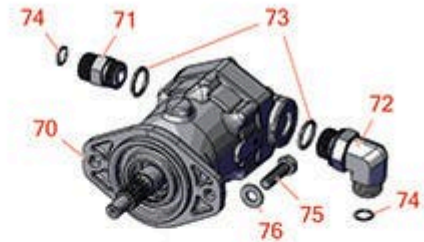




# Replaces Toro Groundsmaster 4700-D

## Parts

Traction Unit - Model 30868  
Rear Axle



FOR MORE TIRE SELECTIONS PLEASE  
CLICK ON THE TIRE ICON ABOVE.

All original equipment manufacturers names and part numbers are used for identification purposes only, and we are in no way implying that our products are original equipment parts. Prices subject to change without notice.



# Replaces Toro Groundsmaster 4700-D Parts

Traction Unit - Model 30868  
Rear Axle



Item No	R&R Part No.	OEM Part No.	Description	Qty Req	Order Quantity
<b>Overhaul Kits</b>					
1	<b>R107-0245</b>	107-0245	Seal Kit - Fits R105-0775 Hyd Cyl	1	
<b>Tires</b>					
40	<b>R232-24</b>	232-24, 232-35	Stem - Valve w/ Cap	4	
<b>Other Parts Available</b>					
70	<b>R105-1219</b>	105-1219	Piston Motor Assy - Rear	1	
71	<b>R340-9</b>	340-9	Fitting - Straight Connector	1	
72	<b>R340-142</b>	340-142, 95-1692	Hydraulic Fitting - 90 Deg	1	
73	<b>R237-81</b>	237-81, 237.81, 327-81	O-Ring	2	
74	<b>R237-58</b>	237-58	O-Ring	2	
75	<b>R325-7</b>	01-150-0380, 01-178-0814, 3226-3, 325-7, 48-9490	Bolt - 1/2-13 x 1 3/4 Hex HD Gr 5	2	
76	<b>R3256-26</b>	01-166-0540, 01-166-0820, 17-2530, 24-13-BD, 30-8570, 3256-26, 356206, 48-9390	Washer - 1/2 in	2	
77	<b>R32120-15</b>	32120-15	Ring - Snap	2	

All original equipment manufacturers names and part numbers are used for identification purposes only, and we are in no way implying that our products are original equipment parts. Prices subject to change without notice.



# Replaces Toro Groundsmaster 4700-D Parts

*Traction Unit - Model 30868  
Rear Axle*



Item No	R&R Part No.	OEM Part No.	Description	Qty Req	Order Quantity
78	<b>R3253-4</b>	01-166-0110, 01-166-0510, 23-10-GD, 24-7170, 30-8520, 3253-4, 48-9350, 48-9360, 48-9570, 68-9420, 99-7577	Washer - Lock 5/16 Zinc	1	
79	<b>R340-2</b>	340-2, 60-1920	Hydraulic Fitting - Striaight	4	
80	<b>R237-22</b>	107-8844, 237-22, 237-78	O-Ring	4	
81	<b>R237-42</b>	237-42, 31-4160	O-Ring	4	
82	<b>R107-1976</b>	107-1976	Cylinder - Steering	1	
83	<b>R340-97</b>	340-97	Hydraulic Fitting - 90 Deg	2	
84	<b>R302-5</b>	21-6010, 302-11, 302-37, 302-47, 302-5, 302-57, 302-58, 302-6, 31-0300, 32-9660, 60-0800, 62-3880, 92-4181	Fitting - Grease	1	
85	<b>R302-60</b>	302-60	Zerk - Grease 90 Deg.	1	
86	<b>R100-3795</b>	100-3795	Ball Joint	1	

All original equipment manufacturers names and part numbers are used for identification purposes only, and we are in no way implying that our products are original equipment parts. Prices subject to change without notice.



# Replaces Toro Groundsmaster 4700-D Parts

*Traction Unit - Model 30868  
Rear Axle*



Item No	R&R Part No.	OEM Part No.	Description	Qty Req	Order Quantity
87	<b>R106-6774</b>	106-6774, 92-5838, 92-5838-01	Ball Joint	1	
88	<b>R32151-104</b>	32151-104	Ring - Retaining, Ex	2	
89	<b>R92-5836</b>	92-5836	Flat Washer - Hardened	1	
90	<b>R100-3796</b>	100-3796	Spacer - Ball Joint	1	
91	<b>R3272-11</b>	01-151-0010, 01-151-0040, 28-18-D, 28-28-D, 3211-72, 3272-11	Pin - Cotter	2	
92	<b>R353-989</b>	353-989	Plug - Hex - Hollow	1	
93	<b>R32121-110</b>	32121-110	Roll Pin - Slotted	1	
95	<b>R92-1765</b>	92-1765	Washer - Thrust	1	
96	<b>R323016</b>	302-33, 323016	1/8"-NPT 90 Degree Grease Fitting	1	

All original equipment manufacturers names and part numbers are used for identification purposes only, and we are in no way implying that our products are original equipment parts. Prices subject to change without notice.